

# H3 POWER



Datasheet

# INDEX

Type and output overview.....	2
Description.....	3
Illustration and dimensions .....	4
Installation and assembly link.....	5

## TYPE AND OUTPUT

Length mm	Height	Effect	Colour	Article Number
230 mm	1480 mm	<b>70 Watt</b>	<b>Polished steel</b>	348601480230
230 mm	1480 mm	<b>70 Watt</b>	<b>Brushed steel</b>	348611480230
230 mm	1480 mm	<b>70 Watt</b>	<b>Black</b>	348631480230
230 mm	1480 mm	<b>70 Watt</b>	<b>White</b>	348651480230
230 mm	1480 mm	<b>70 Watt</b>	<b>Polished brass</b>	348641480230
230 mm	1480 mm	<b>70 Watt</b>	<b>Brushed brass</b>	348661480230

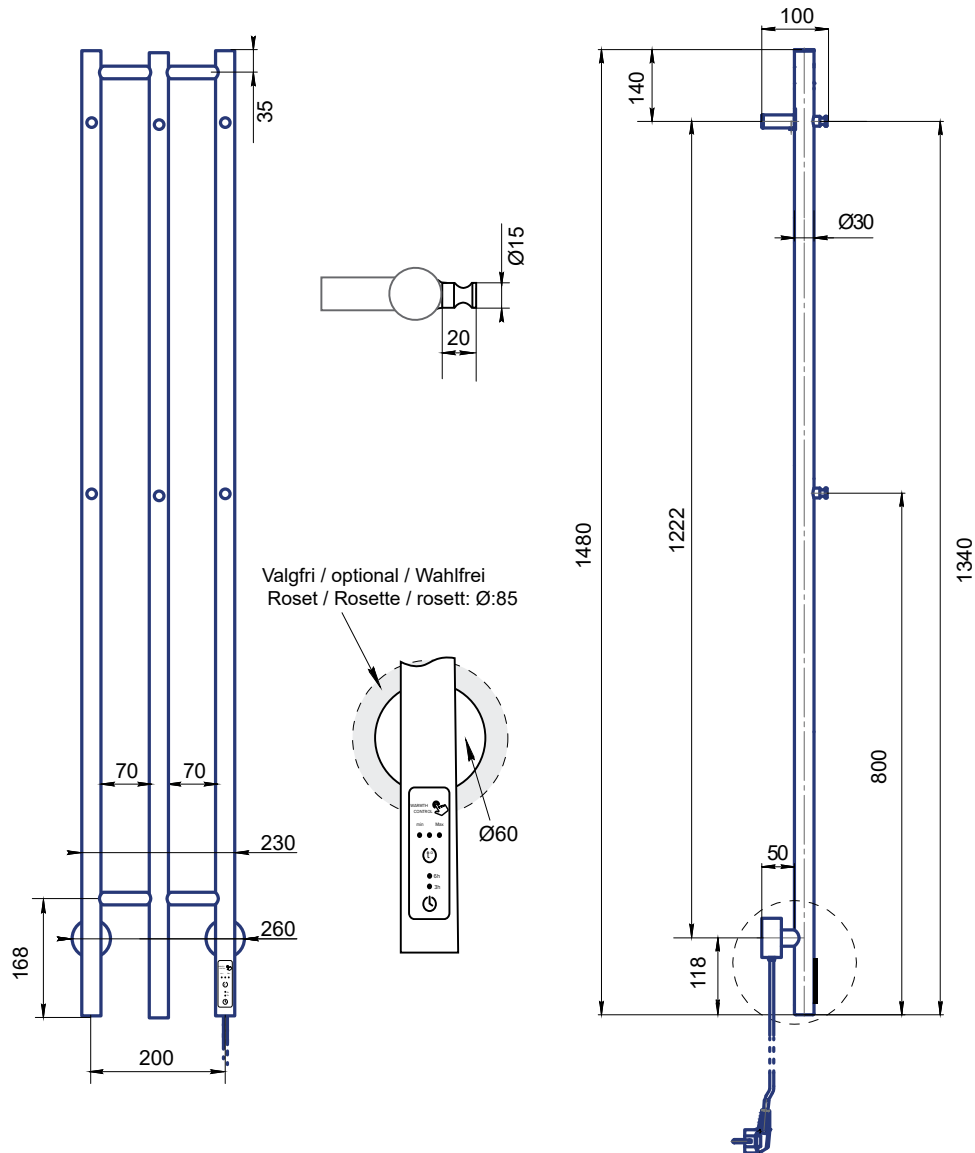
# DESCRIPTION

The Hudevad H3 Power is a beautiful and simple electric heated towel rail with 3 vertical tubes - each fitted with 2 hook that ensures that your towels in your bathroom can dry with ease. The H3 Power would also be obvious to use in the utility room for wet coats, in the kitchen for wet tea towels and naturally in the bathroom for towels and wash cloths. The heated towel rail can be installed wherever it is possible to connect it to 220-240V power and is installed with either a hidden cable directly in the wall or with a visible cable and plug. Hudevad H3 Power is equipped with a control panel on the front, where you can choose between 3 heat settings and whether it should heat for 3 or 6 hours or heat continuously until you turn it off.

<b>Material</b>	Stainless steel tubes ø30 mm with roses ø60 mm
<b>Finishes</b>	Polished or brushed steel, Black (RAL 9005), White, Painted polished, painted brushed brass
<b>Included</b>	Brackets. Cable (white) 1500 mm, with Schuko plug (3 legs) Please always adhere to local regulations and install the product accordingly.
<b>Technical data</b>	Voltage 220-240V AC ~50Hz, IPX4
<b>Effect</b>	70 W
<b>Output</b>	N/A The Heated towel rail is not meant to be the sole heat source of the room and do not contribute to room heating, but are used exclusively to dry towels or textiles.
<b>Max. Tempertaure</b>	45° +/- 5C°
<b>Height</b>	1.480 mm
<b>Length</b>	230 mm
<b>Depth</b>	50 mm
<b>Installation</b>	The heated towel rail must be wall mounted and with the control panel at the bottom. If the heated towel rail is to be installed WITHOUT power plug - only a qualified electrician should do the job.
<b>Operating</b>	Control via an integrated control panel with choice between 3 heat settings.
<b>Warranty</b>	2 years as long as the Hudevad installation instructions have been followed, the warranty conditions have been met and the towel warmer is installed correctly.

# ILLUSTRATION

Drawing 4.1



**HUDEVAD**  
RADIATOR DESIGN

# INSTALLATION

Installation and user instructions can be find online or by using below QR Code

