

H2 POWER



Datasheet

INDEX

Type and output overview.....	2
Description.....	3
Illustration and dimensions	4
Installation and assembly link.....	5

TYPE AND OUTPUT

Length mm	Height	Effect	Colour	Article Number
130 mm	1480 mm	45 Watt	Polished steel	348601480130
130 mm	1480 mm	45 Watt	Brushed steel	348611480130
130 mm	1480 mm	45 Watt	Black	348631480130
130 mm	1480 mm	45 Watt	White	348651480130
130 mm	1480 mm	45 Watt	Polished brass	348641480130
130 mm	1480 mm	45 Watt	Brushed brass	348661480130

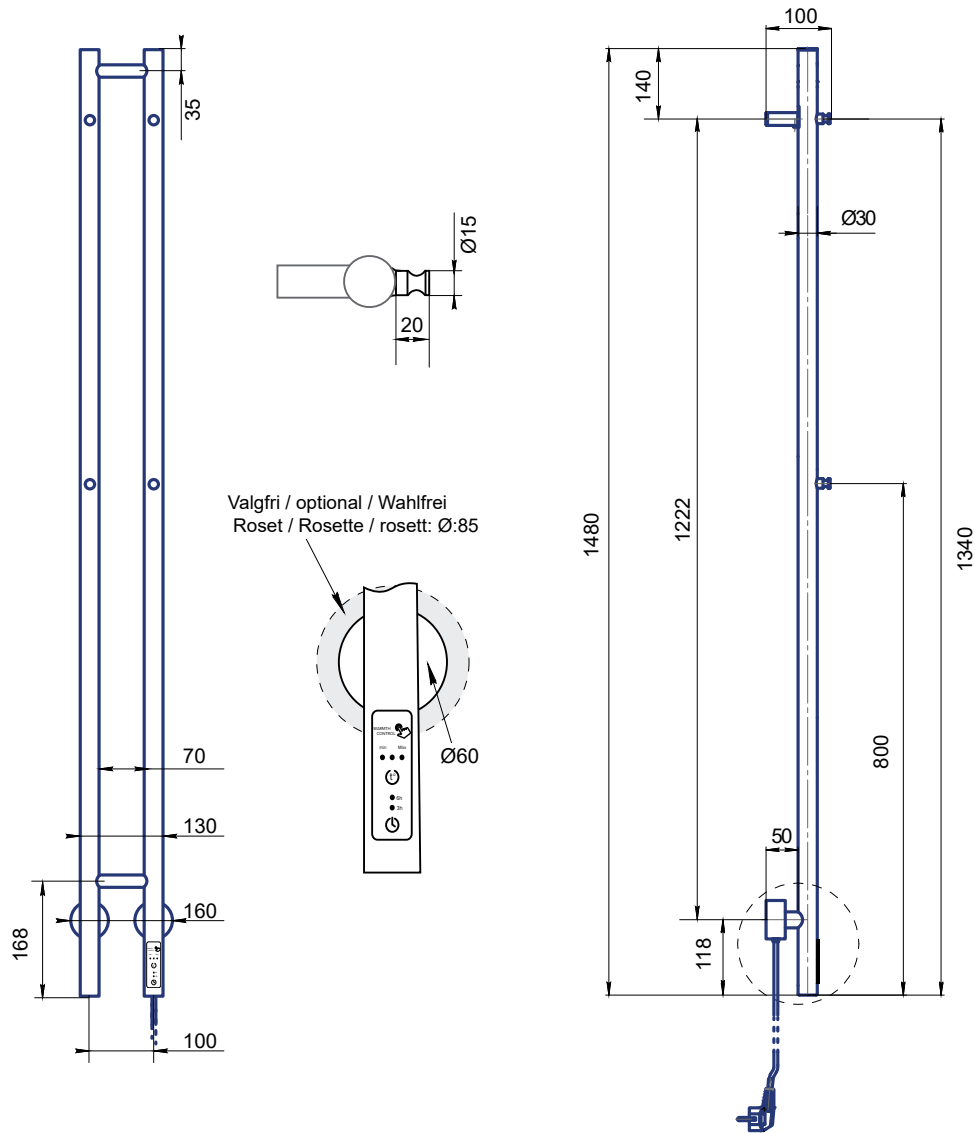
DESCRIPTION

The Hudevad H2 Power is a minimalist electric heated towel rail with 2 vertical tubes - each fitted with 2 hook that ensures that your towels in your bathroom can dry effortlessly. The H2 Power can be used anywhere in your home, as it will function equally well for wet jackets in the utility room as for wet tea towels in the kitchen. The heated towel rail can be installed wherever it is possible to connect it to 220-240V power and is installed with either a hidden cable directly in the wall or with a visible cable and plug. Hudevad H2 Power is equipped with a control panel on the front, where you can choose between 3 heat settings and whether it should heat for 3 or 6 hours or heat continuously until you turn it off.

Material	Stainless steel tubes ø30 mm with roses ø60 mm
Finishes	Polished or brushed steel, Black (RAL 9005), White, Painted polished, painted brushed brass
Included	Brackets. Cable (white) 1500 mm, with Schuko plug (3 legs) Please always adhere to local regulations and install the product accordingly.
Technical data	Voltage 220-240V AC ~50Hz, IPX4
Effect	45 W
Output	N/A The heated towel rail is not meant to be the sole heat source of the room and do not contribute to room heating, but are used exclusively to dry towels or textiles.
Max. Temperature	45° +/- 5C°
Height	1.480 mm
Length	130 mm
Depth	50 mm
Installation	The heated towel rail must be wall mounted and with the control panel at the bottom. If the heated towel rail is to be installed WITHOUT power plug - only a qualified electrician should do the job.
Operating	Control via an integrated control panel with choice between 3 heat settings.
Warranty	2 years as long as the Hudevad installation instructions have been followed, the warranty conditions have been met and the towel warmer is installed correctly.

ILLUSTRATION

Drawing 4.1



HUDEVAD
RADIATOR DESIGN

INSTALLATION

Installation and user instructions can be find online or by using below QR Code

