

HIRA ALU DRY POWER



Datasheet

INDEX

Type and output overview.....	2
Description.....	3
Intelligent thermostat.....	4
Illustration.....	5
Dimensions.....	5
Installation.....	6

TYPE AND OUTPUT

Length mm	Height	Output	Colour	Article Number
600 mm	580 mm	1.000 Watt	White	383015800600
840 mm	580 mm	1.500 Watt	White	383015800840
1080 mm	580 mm	2.000 Watt	White	383015801080
600 mm	580 mm	1.000 Watt	Dark Grey	383025800600
840 mm	580 mm	1.500 Watt	Dark Grey	383025800840
1080 mm	580 mm	2.000 Watt	Dark Grey	383025801080

DESCRIPTION

The Hudevad Hira Alu Dry Power is an aluminium radiator with double lateral tubes encasing a natural volcanic stone. When using dry inertia technology, the radiator heats the air in the room via a process of convection with a soft and continuous heat, this means less energy consumption and quicker heat up times as the internal stone gently adapts to the desired temperature. As there are no fluids inside there is no chance of leaks or corrosion and gives a high energy efficiency rating due to the stone's natural ability to absorb, hold and radiate heat faster and for longer.

Material	Aluminium - Electric dry inertia radiator
Included	Brackets, manual and remote control. Cable (white or black) 1200 mm, with EU plug Cable, (white or black) 900 mm without plug Please always adhere to local regulations and install the product accordingly.
Technical data	Voltage 230V AC ~50Hz, IP24, Class II
Output	Length: 600 mm: 1.000 W, 840 mm: 1.500 W, 1.080 mm: 2.000 W
Surface treatment	Powder coated in accordance with DIN 55900, EN 442.
Height	580 mm
Length	600, 840 and 1.080 mm
Depth	90 mm
Installation	This radiator must be wall mounted and must not be installed immediately below or in front of a power socket or directly touch the wall or floor. If installed within a bathroom, the radiator must be mounted outside areas directly affected by water (UK: Zone 1) and the switch / electric control must be in a dry area (UK: Zone 3).
Operation	Control via an integrated thermostat with automatic weekly programming, open window detection, presence detection and boost function. The unit is installed with a Pilot Wire - The home must be fitted with an automation system supporting this type of technology to use.
Warranty	10 years for the radiator and 2 years for the electrical components, as long as the Hudevad installation instructions have been followed, the warranty conditions have been met and the radiator is installed outside the splash area.

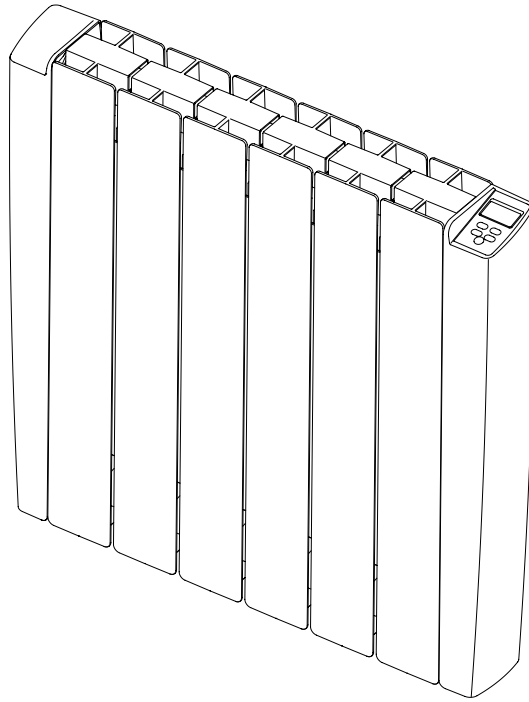
INTELLIGENT THERMOSTAT



The digital control for the Hudevad Hira Alu is with an LCD display and is located on the top right hand side of the radiator, with several functions for efficiency, energy saving and safety in mind.

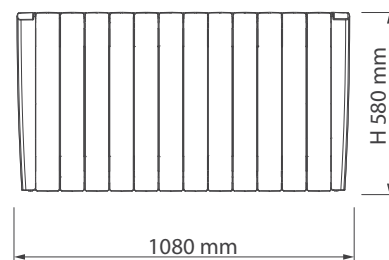
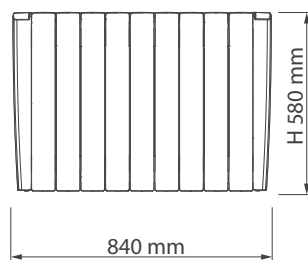
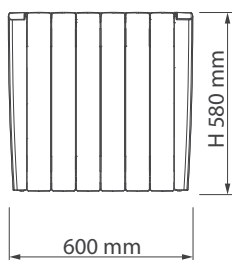
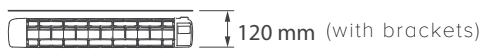
Temperature setting	Adjustable from + 7 °C to + 32 °C
Possible operating modes	Standby, Comfort, Night/Eco, Anti-Freeze, Chrono
7-day/week program	Possible
Boost/Overdrive	Can be used to heat the room quickly. The appliance heats at the maximum power for 2 hours, independently from the temperature setting.
Open window detection	Automatic switches to Anti-Freeze setting when a significant temperature drop is detected.
Child safety/key pad lock	The control panel can be locked.
Ergonomic	Backlit display, adjustment is simple and intuitive.
More information	<p>The appliance is designed to heat rooms. When operating normally, the surface of the appliance becomes very hot and may cause burns. Avoid contact with parts of the body. Pay particular attention when children are present.</p> <p>More information, instructions and how to install can be found in the Hira Alu manual.</p>

ILLUSTRATIONS



Drawing 5.1

DIMENSIONS



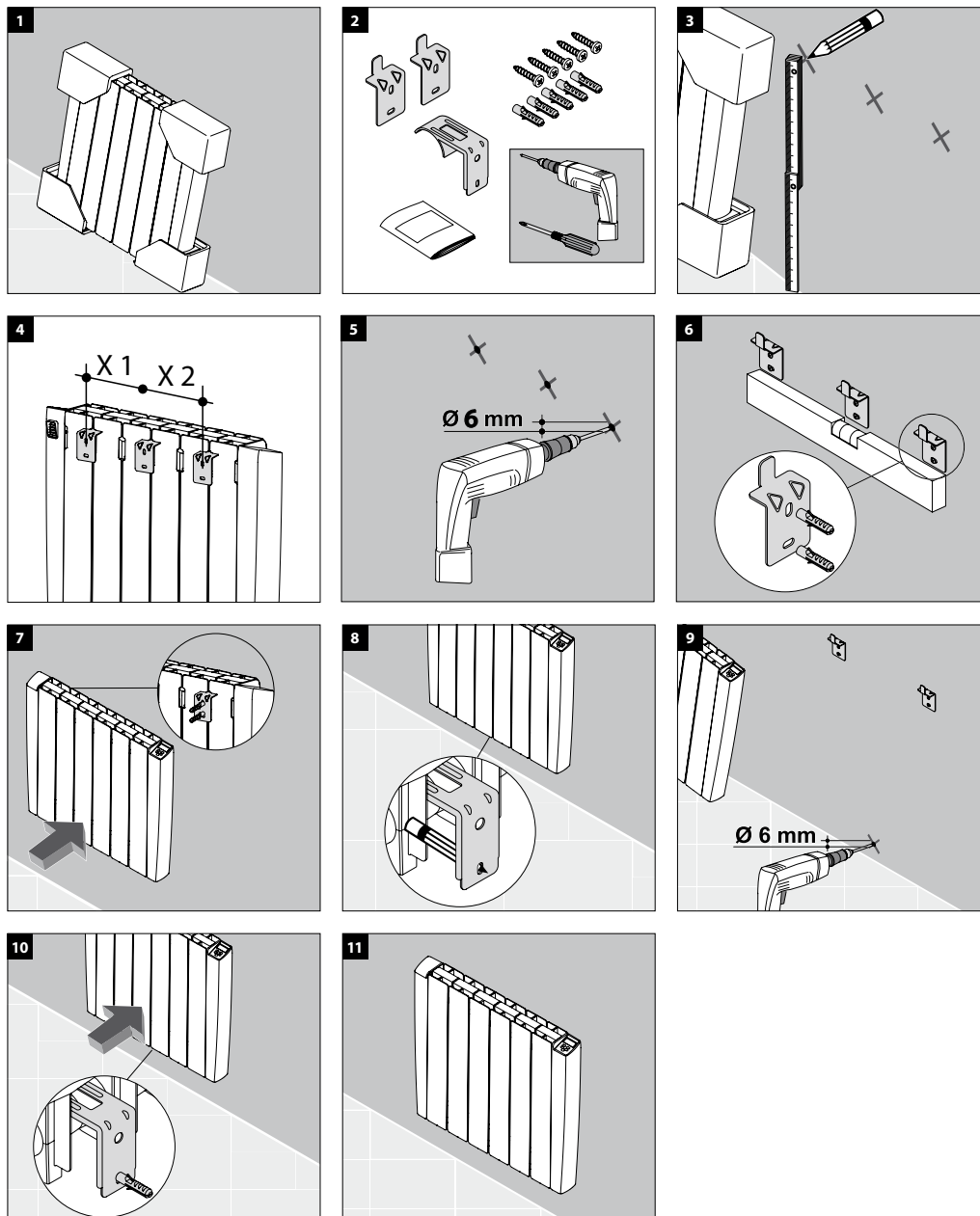
Drawing 5.2

HUDEVAD
RADIATOR DESIGN

INSTALLATION

Power (W)	No. of elements	Number of brackets - TOP	Number of brackets - BOTTOM	X1 mm	X2 mm	X3 mm
1.000	6	3	1	161	161	-
1.500	9	3	1	322	242	-
2.000	12	4	2	242	322	242

Drawing 6.1



Please allow min. 150 mm air below and to either side and at least 600 mm above and to items placed in the area such as furniture, curtains etc. For further information on installation, brackets, etc. please see the Hudevad Hira Dry Power manual.

HUDEVAD
RADIATOR DESIGN