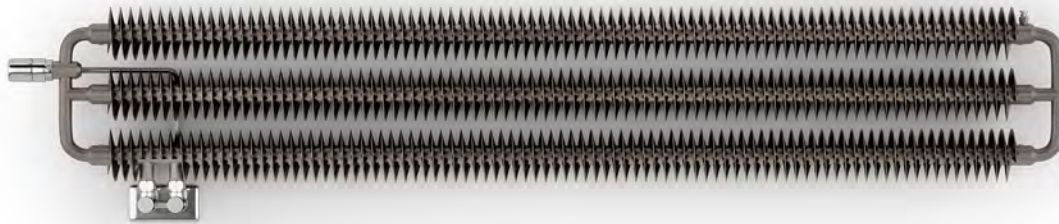


# Ribbon HWS

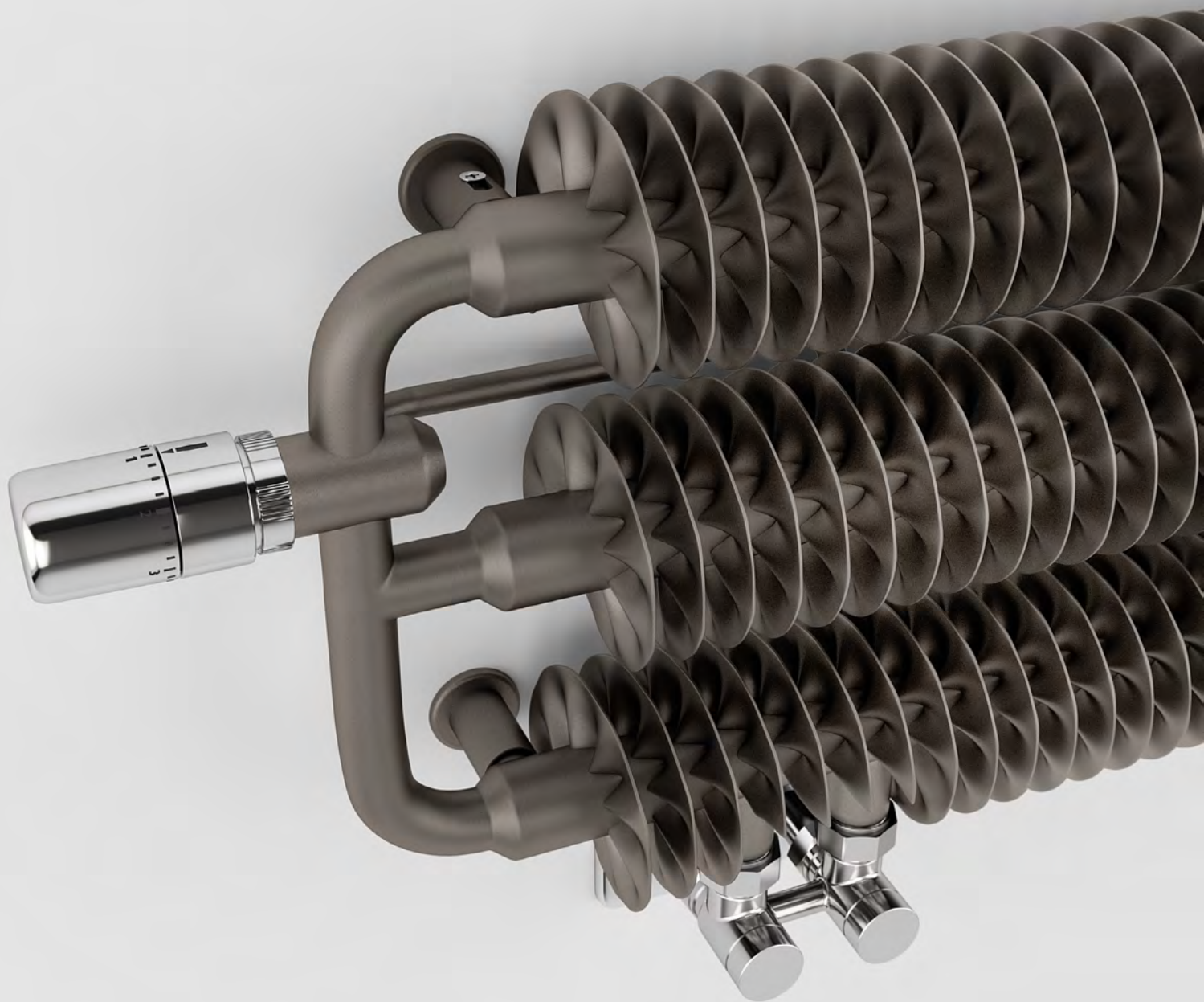


Colour included  
in the price



**Ribbon HWS** 290↕ × 1740↔ VL  
colour: Graphite

Integrated lockshield valve, chrome  
SLIM thermostatic head, chrome  
Integrated pipe-masking set, chrome



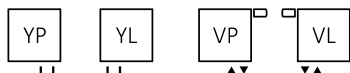
# Ribbon HWS



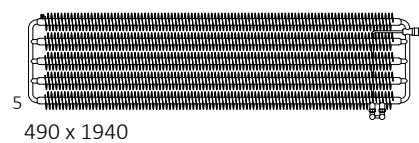
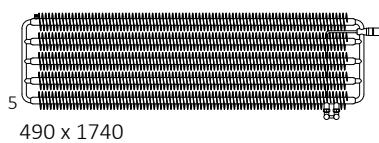
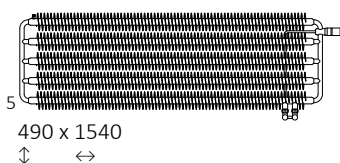
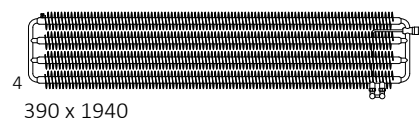
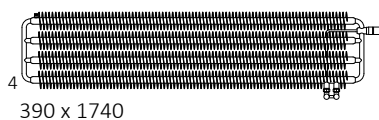
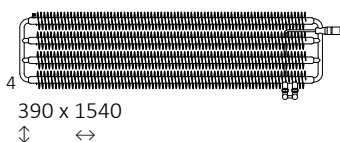
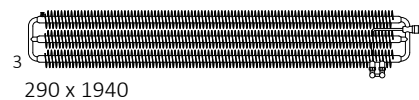
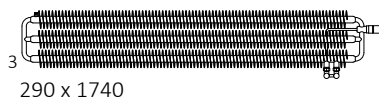
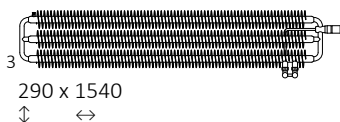
Colour included  
in the price

Projekt : *Terma*

## Connections:



## Available sizes:



## Specifications:

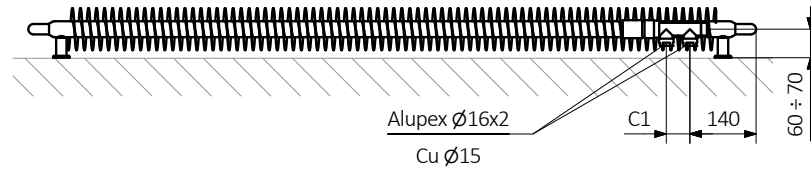
Working pressure: 1000 kPa Maximum operating temperature: 95°C

A ↓	B ↔	C1 [mm]	75 65 20°C [W]	55 45 20°C [W]	D [mm]	E [mm]	F [mm]	H [dm <sup>3</sup> ]	⚖ [kg]	Product Code	Configuration code p. 212
290	1540	50	802	411	1400	200	43	2.90	25,14	WGHWS029154	
290	1740	50	906	464	1600	200	43	3.27	28,30	WGHWS029174	
290	1940	50	1010	517	1800	200	43	3.64	31,45	WGHWS029194	
390	1540	50	990	504	1400	300	43	3.78	32,67	WGHWS039154	
390	1740	50	1119	570	1600	300	43	4.26	36,88	WGHWS039174	
390	1940	50	1248	636	1800	300	43	4.75	41,09	WGHWS039194	
490	1540	50	1329	670	1400	400	43	4.65	40,18	WGHWS049154	
490	1740	50	1501	757	1600	400	43	5.26	45,45	WGHWS049174	
490	1940	50	1673	844	1800	400	43	5.87	50,71	WGHWS049194	

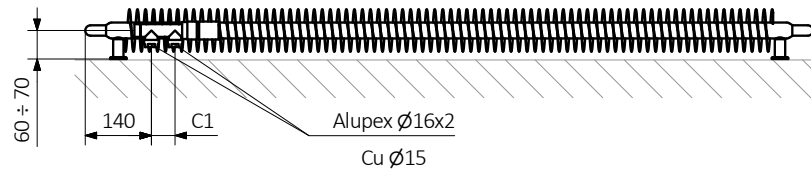
# Ribbon HWS



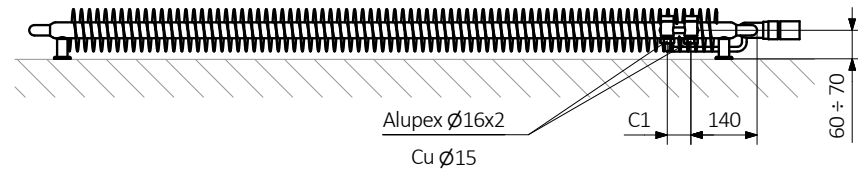
**YP**



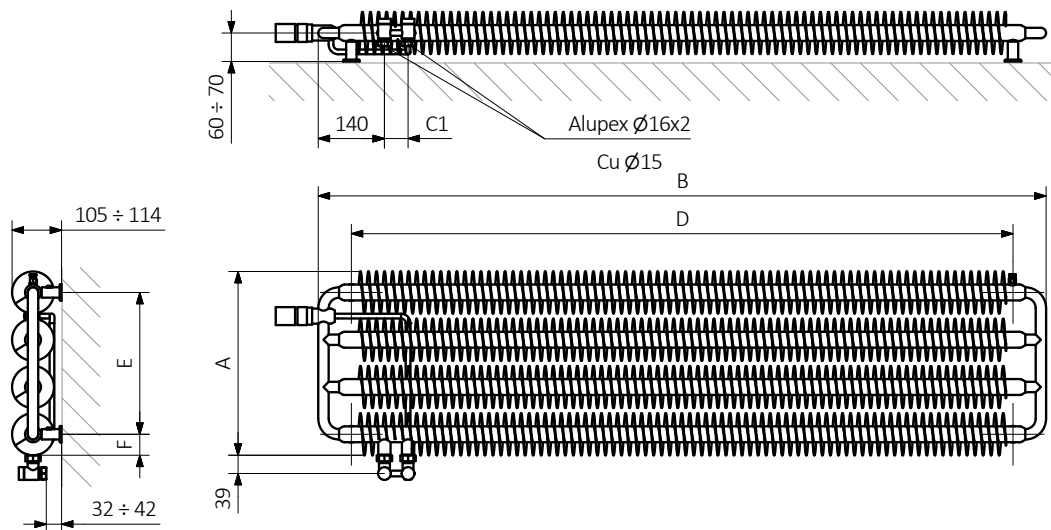
**YL**



**VP**

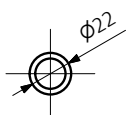


**VL**

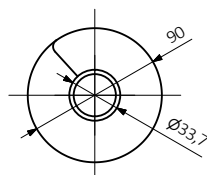


A — Height B — Width C1-C5 — Distance between pipe centres D — Horizontal distance between mounting bracket centres  
E — Vertical distance between mounting brackets F — Distance between a mounting bracket and the bottom of the radiator

**Collector:**



**Profile:**





Colour included  
in the price

Product codes can be found in product data sheet tables. The codes provide some basic information about the product while a partially filled configuration code contains complementary information about the detailed specifications. When placing an order, product codes should include the fully completed configuration part. The configuration code part should be placed after the main product code. The main product code and configuration part will appear as shown in the example below:

## The construction of a water radiator product and configuration code:

WGHSD019154

PRODUCT CODE

(located in the table for the product)

K916VP

CONFIGURATION CODE

(supplemented by hand)

### Configuration

K 916 VP

Package code

Colour code

Connection code

*K – carton box*

## Epoxy primer

**E** – Code of epoxy primer is an extra processes.

WLAL054030 K916SX **E** — Extra processes or additions code



## Legend



Radiator available in a "water" version.



Radiator suitable for dual fuel connection. Electric heating element can be installed.



Radiator available in electric only version. It comes prefilled with a 'heating medium' and equipped with a heating element. All tested and ready to use.



Connection types dedicated for this radiator. The icon shows the flow and return connections for the radiator as well as the thermostatic valve and heating element position if applicable.



Suggested heating element power output for electric and dual fuel versions.



Weight.



Capacity.



Available in chrome finish.



No additional payment for a color.