

MINUETTE Stainless Steel towel warmer. Available in the following finishes: Chrome-plated, Gold, Brushed Bronze, Brushed Copper and Satin Nickel.



Minuette, Hight 682 mm, Lenght 570 mm, Gold

Construction features

stainless brass towel warmer
horizontal tubes 30 mm diameter
side manifolds 30 mm diameter
1/2" Gas right threading
maximum working pressure 15 bar
maximum working temperature 95°C

Standard equipment

2 pcs Elbow-type design valve fitting 1/2" connection thread on the radiator's manifold;
2 pcs 15 mm copper tube connection kit;
2 pcs 1/2" M eccentric tube, to suit the 15 mm valve copper connection,
complete with wall cover to hide the pipe fittings;
2 pcs wall bracket matching radiator's colour/finishing
1 pcs air-vent valve
1 pcs blind plug

Plus



Technical data

Model	Depth (mm)	Height (mm)	Width (mm)	Conn. C. (mm)	Weight (kg)	Capacity (lt)	COM_PRODUCTS_TABLE_DATA_BTU	$\Delta t=50^{\circ}\text{C}$ (kcal/h)	$\Delta t=50^{\circ}\text{C}$ (Watt)	$\Delta t=40^{\circ}\text{C}$ (Watt)	$\Delta t=30^{\circ}\text{C}$ (Watt)	$\Delta t=20^{\circ}\text{C}$ (Watt)	Exponent
414 - 3 rails - 2 espaces	60,0	414	540	500	5,80	1,20	394,0	99,0	116,0	88,0	62,0	38,0	1,203
596 - 4 rails - 3 espaces	60,0	596	540	500	7,80	1,70	526,0	132,0	154,0	118,0	83,0	51,0	1,203
778 - 5 rails - 4 espaces	60,0	778	540	500	9,70	2,10	657,0	166,0	192,0	146,0	102,0	61,0	1,252
960 - 6 rails - 5 espaces	60,0	960	540	500	11,70	2,60	790,0	199,0	232,0	175,0	121,0	73,0	1,263

Thanks to the high performance of Irsap Minuette radiators, the ideal Δt for low temperature projects is Δt at 30°C .

Heat output are estimated and are undergoing certification. Power calculated with $\Delta t 50^{\circ}$. For Δt differt from 50°C use the formula $Q=Q_n (\Delta t / 50)^n$.

Standard equipment

- 2 pcs Elbow-type design valve fitting 1/2" connection thread on the radiator's manifold;
- 2 pcs 15 mm copper tube connection kit;
- 2 pcs 1/2" M eccentric tube, to suit the 15 mm valve copper connection, complete with wall cover to hide the pipe fittings;
- 2 pcs wall bracket matching radiator's colour/finishing
- 1 pcs air-vent valve
- 1 pcs blind plug

Packing

The attention that Irsap lavishes on each radiator is also evident in the care given to packaging. Every radiator is protected with packaging caps in shockresistant material; this extra protection prevents damage and scratching during both shipping and handling onsite. All the packaging must be disposed in conformity with the regulations in force, acknowledged by the respective bodies.

Colors and Finishes

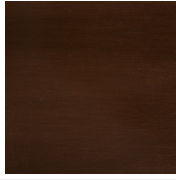
FINISHES



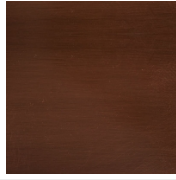
Cromato
Cod. 50



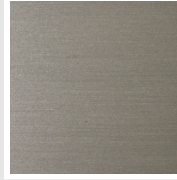
Oro
Cod. 52



Bronzo Spazzolato
Cod. 54



Rame Spazzolato
Cod. 5F



Nichel Satinato
Cod. 6E

The Colors used in this folder are not considered binding. The different technological painting processes and the materials used for the realization can not have a perfect color match with the delivered product. Irsap company reserves the right to introduce at any time whatever modifications necessary to the improvement of the product.