


Warp T



 colour included
in the price

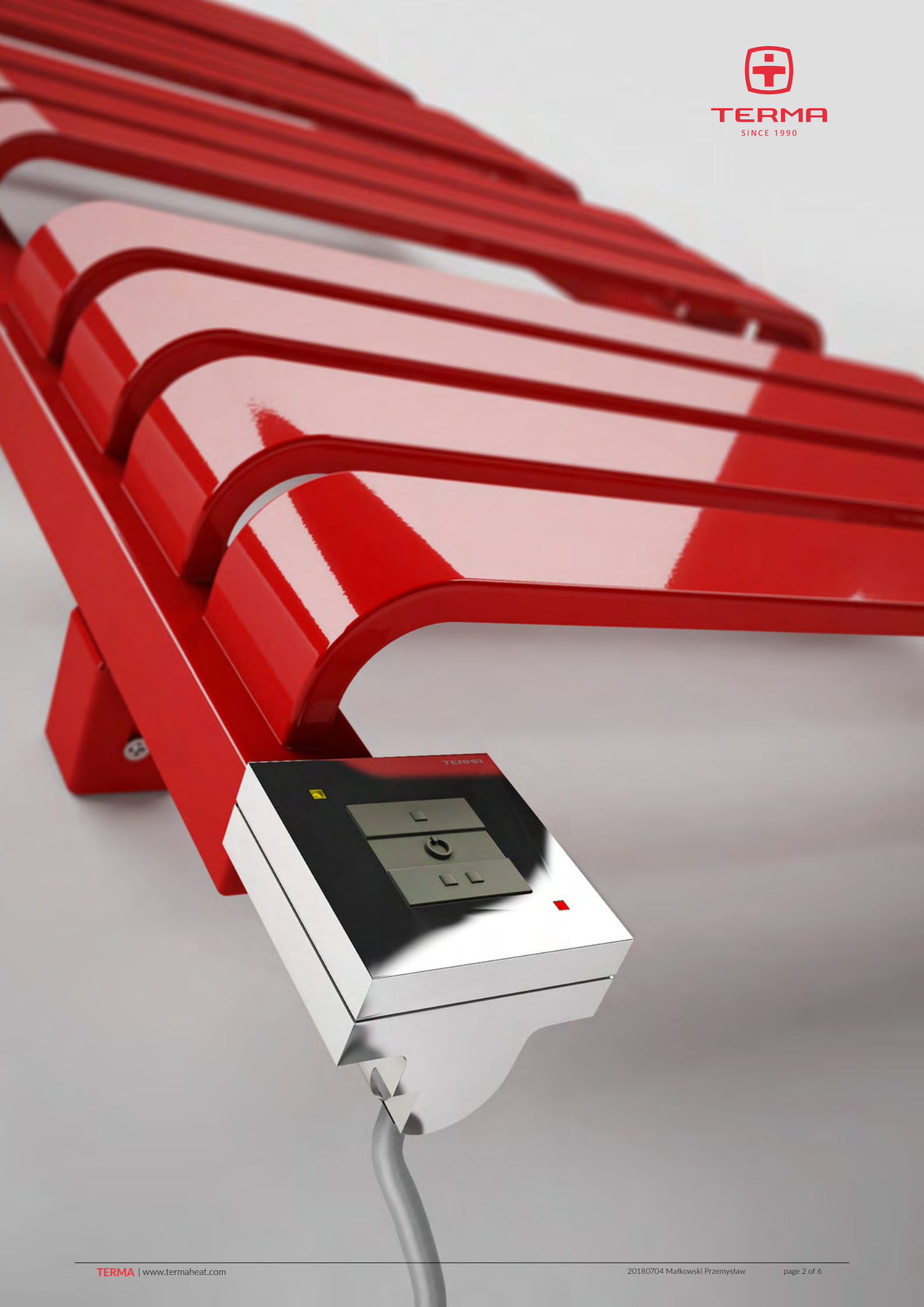


Warp T 1110↓ × 500↔ SX
colour: RAL 3028

Angled integrated thermostatic valve set with immersion tube, right, chrome
Integrated pipe-masking set, chrome
KTX 1 heating element, chrome



TERMA
SINCE 1990



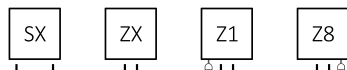
Warp T



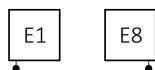
colour included in the price

Projekt : Terma

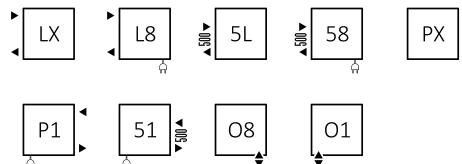
Standard connection:



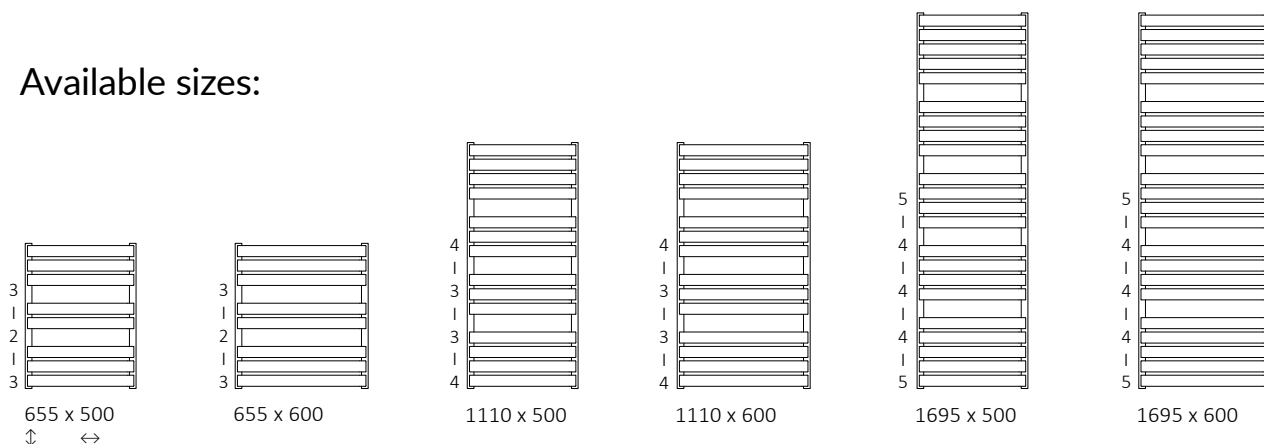
Electric radiators:



Optional connection:



Available sizes:



Specification:

Working pressure: 600 kPa Maximum operating temperature: 95°C

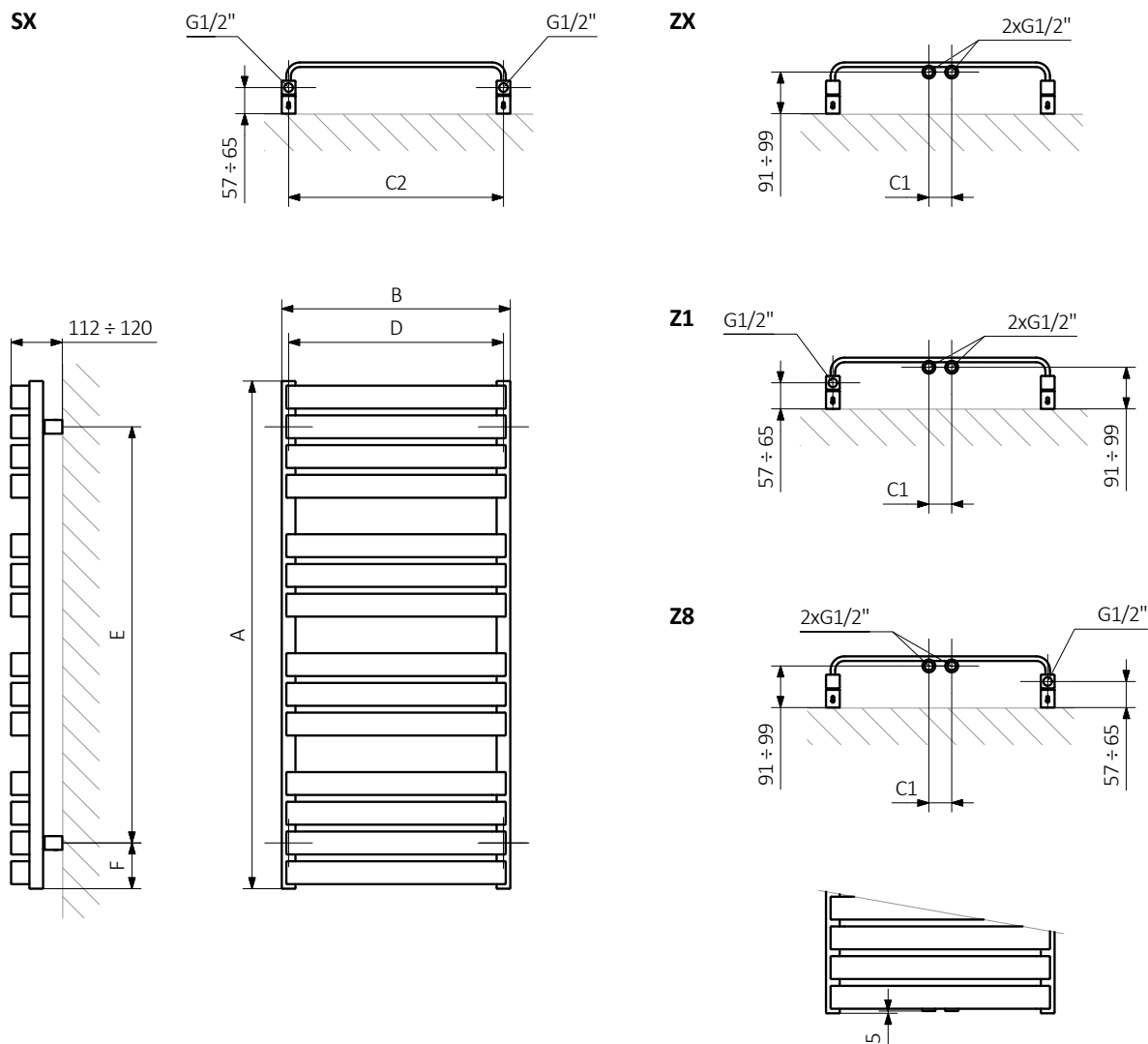
A ↓ [mm]	B ↔ [mm]	C1 [mm]	C2 [mm]	75/65 20°C [W]	55/45 20°C [W]	☺ [W]	D [mm]	E [mm]	F [mm]	📄 [dm ²]	📖 [kg]	Product code <small>Configuration code p. 5</small>
655	500	50	470	325	176	300	470	455	100	2,32	12,33	WGWAT065050
655	600	50	570	383	208	400	570	455	100	2,59	14,45	WGWAT065060
1110	500	50	470	553	298	600	470	910	100	4,02	21,19	WGWAT111050
1110	600	50	570	650	350	600	570	910	100	4,48	24,92	WGWAT111060
1695	500	50	470	846	453	800	470	1495	100	6,24	32,94	WGWAT169050
1695	600	50	570	1000	535	1000	570	1495	100	6,96	38,80	WGWAT169060

Warp T



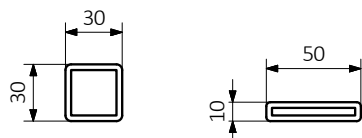
colour included in the price

Technical drawing:




A – Height B – Width C1-C5 – Distance between pipe centres D – Horizontal distance between mounting bracket centres
E – Vertical distance between mounting brackets F – Distance between a mounting bracket and the bottom of the radiator

Collector : **Pipe :**





 colour included
in the price

In the table with technical data, the last column lists product codes. When placing an order, please remember to quote the product code followed by the configuration code as shown in the diagram below:

The construction of a water and dual fuel radiator product and configuration code:

WGWAT065050

PRODUCT CODE
(located in the table for the product)

K916SX

CONFIGURATION CODE
(supplemented by hand)

Example Configuration

K 916 SX

Package code Colour code Connection code
K - carton box

Construction of electric heater configuration code:

WLWAT065050

PRODUCT CODE
(located in the table for the product)

K916E1DRYW

CONFIGURATION CODE
(supplemented by hand)

Example Configuration

K 916 E1 DRY W

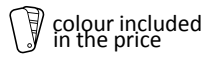
Package code Colour code Connection code Heating element code Type of heating element cable code
K - carton box

Epoxy primer

E – Code of epoxy primer is an extra processes.

WGWAT065050 K916SX **E** — Extra processes or additions code

Warp T



Legend



Radiator available in a "water" version.



Radiator suitable for dual fuel connection. Electric heating element can be installed.



Radiator available in electric only version. It comes prefilled with a 'heating medium' and equipped with a heating element. All tested and ready to use.



Connection types dedicated for this radiator. The icon shows the flow and return connections for the radiator as well as the thermostatic valve and heating element position if applicable.



Suggested heating element power output for electric and dual fuel versions.



Weight.



Capacity.



Available in chrome finish.



No additional payment for a color.