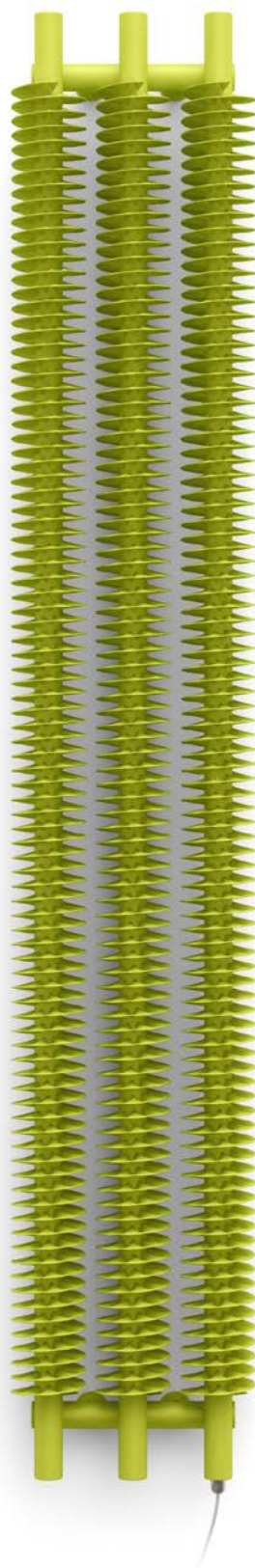


Ribbon V E

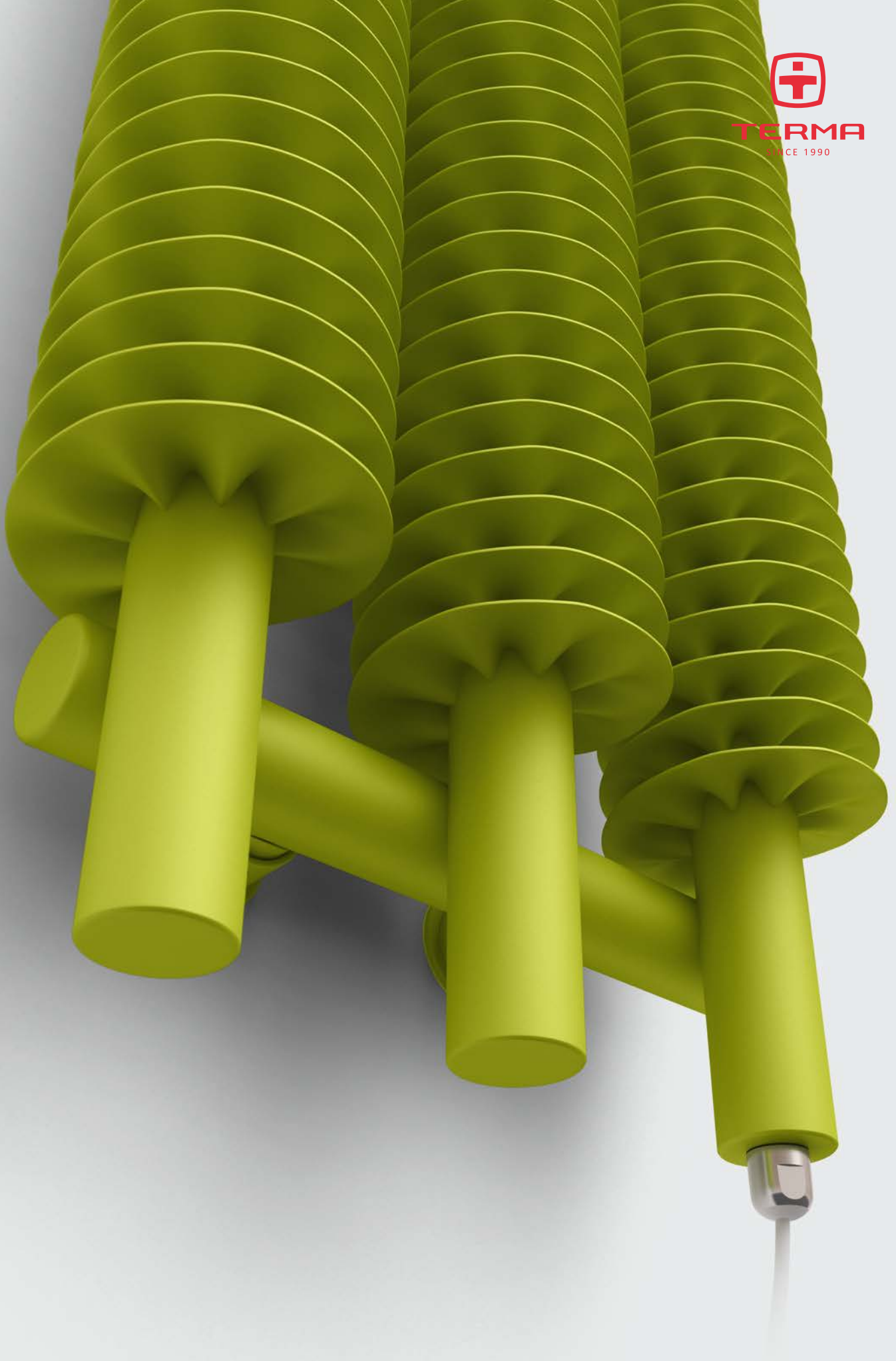


Ribbon V E 1800 \updownarrow × 290 \leftrightarrow E8
colour: Soft Green Apple

SIM



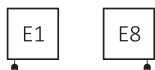
TERMA
SINCE 1990



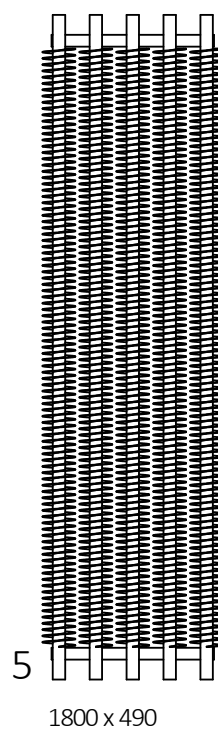
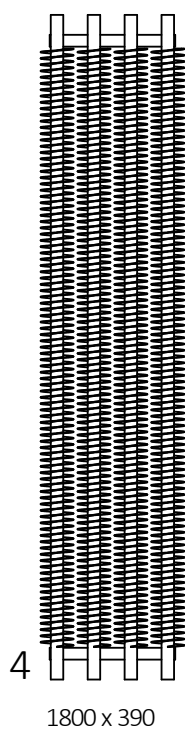
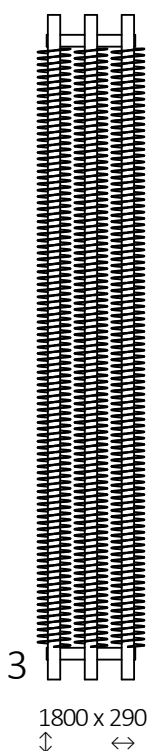
Ribbon V E






Connections:



Available sizes:



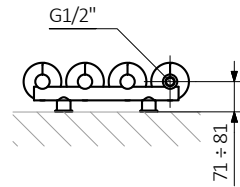
Specifications:

A ↕ [mm]	B ↔ [mm]	 [W]	D [mm]	E [mm]	F [mm]	 [dm ³]	 [kg]	Product Code <small>Configuration codes.4</small>
1800	290	600	100	1660	70	3,33	28,52	WLRVE180029
1800	390	800	200	1660	70	4,45	38,03	WLRVE180039
1800	490	1000	300	1660	70	5,57	47,55	WLRVE180049

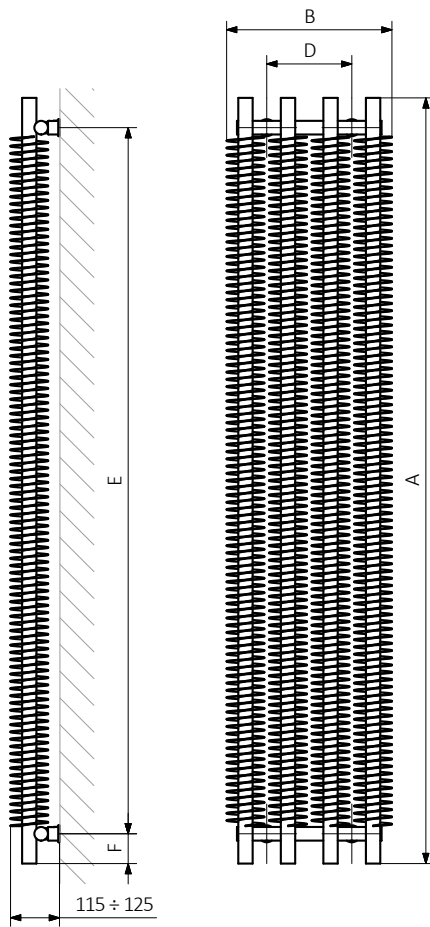
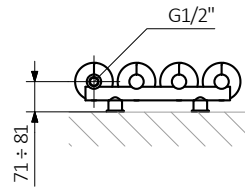
Ribbon V E



E8



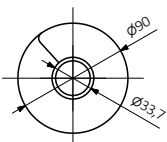
E1



A — Height B — Width C1-C5 — Distance between pipe centres D — Horizontal distance between mounting bracket centres
E — Vertical distance between mounting brackets F — Distance between a mounting bracket and the bottom of the radiator

Collector:

Profile:





Product codes can be found in product data sheet tables. The codes provide some basic information about the product while a partially filled configuration code contains complementary information about the detailed specifications. When placing an order, product codes should include the fully completed configuration part. The configuration code part should be placed after the main product code. The main product code and configuration part will appear as shown in the example below:

Construction of electric heater configuration code:

WLRVE180029

PRODUCT CODE
(located in the table for the product)

K916E1SIMW

CONFIGURATION CODE
(supplemented by hand)

Example Configuration

K **916** **E1** **SIM** **W**

Package code
K - carton box

Colour code

Connection code

Heating element code

Type of heating element cable code

Epoxy primer

E - Code of epoxy primer is an extra processes.

WGR2T093050 K916SX **E** — *Extra processes or additions code*



Legend



Available in chrome finish.



Radiator available in a “water” version.



Radiator suitable for dual fuel connection. Electric heating element can be installed.



Radiator available in electric only version. It comes prefilled with a ‘heating medium’ and equipped with a heating element. All tested and ready to use.



Connection types dedicated for this radiator.

The icon shows the flow and return connections for the radiator as well as the thermostatic valve and heating element position if applicable.



Suggested heating element power output for electric and dual fuel versions.



Weight.



Capacity.