

A three-dimensional line that evolves, moving away from the wall to enter the surroundings with the additional function of support; two blades of light at its sides emphasize the etherealness of the skyline formed by fluid surfaces and curves that create support surfaces, an elegant functionality concealed by new forms. The valves are hidden and lead to just one element attached to the wall.



Tratto, Hight 1600 mm, Lenght 450 mm, Quartz 1

Construction features

- radiating panel
- 1/2" Gas right threading
- maximum working pressure 4 bar
- maximum working temperature 95°C
- this radiator is already fitted for the insertion of the optional thermostat
- head

Standard equipment

- water connection system installed on the product complete with fittings for connection to copper pipes (12, 14 and 15 mm diameter) and multilayer pipes (14 x 2 thick and 16 x 2 thick)
- wall fixing system
- accessory towel holder
- LED lighting system optional
- air vent

Certifications



Plus



Technical data

Model	Deph (mm)	Height (mm)	Width (mm)	Conn. C. (mm)	Weigth (kg)	Capacity (lt)	COM_PRODUCTS_TABLE_DATA_BTU	$\Delta t=50^{\circ}\text{C}$ (kcal/h)	$\Delta t=50^{\circ}\text{C}$ (Watt)	$\Delta t=40^{\circ}\text{C}$ (Watt)	$\Delta t=30^{\circ}\text{C}$ (Watt)	$\Delta t=20^{\circ}\text{C}$ (Watt)	Exponent
Tratto	326,0	1200	450	50	26,90	1,80	1.894,0	477,0	555,0	425,0	301,0	185,0	1,199
Tratto with led	326,0	1200	450	50	26,90	1,80	1.894,0	477,0	555,0	425,0	301,0	185,0	1,199
Tratto	326,0	1600	450	50	33,10	2,00	2.354,0	593,0	690,0	528,0	374,0	230,0	1,197
Tratto with led	326,0	1600	450	50	33,10	2,00	2.354,0	593,0	690,0	528,0	374,0	230,0	1,197

Thanks to the high performance of Irsap Tratto radiators, the ideal Δt for low temperature projects is Δt at 30°C .

For Δt different from 50°C use the formula $Q=Q_n (\Delta t / 50)^n$

Standard equipment



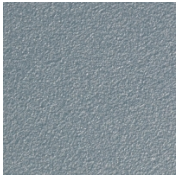
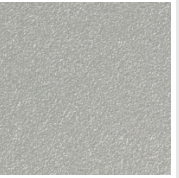

water connection system installed on the product complete with fittings for connection to copper pipes (12, 14 and 15 mm diameter) and multilayer pipes (14 x 2 thick and 16 x 2 thick) • wall fixing system • accessory towel holder • LED lighting system optional • air vent

Packing

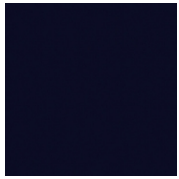
The attention that Irsap lavishes on each radiator is also evident in the care given to packaging. Every radiator is protected with packaging caps in shockresistant material; this extra protection prevents damage and scratching during both shipping and handling onsite. All the packaging must be disposed in conformity with the regulations in force, acknowledged by the respective bodies.

Colors and Finishes

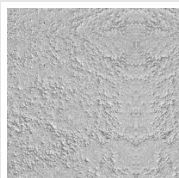
SPECIAL

							
Bianco Perla Cod. 16	Quartz 1 Cod. 1C	Sablé Cod. Y4	Quartz 2 Cod. 2C	Sunstone Cod. 2D	Petra Cod. 3D	Bruno Tabacco Cod. 1B	Flame Red Cod. 7D
							
Purple Blue Cod. 1D	Azurite Cod. 6D	Azurite 3 Cod. 6C	Grigio Medio Cod. 4D	Grigio Titanio Metallizzato - RAL 9023 Cod. L3	Grigio Silver Cod. 5D	Grigio Perla Cod. L6	Grigio Alluminio - RAL 9006 Cod. B4
							
Nero Grafite Cod. 18	Grigio Quarzo Cod. 31	Nero Satinato Cod. 30	Luxury White Cod. J7	Bianco Opaco Cod. J8	Nero Opaco Cod. K1	Bronzo Cod. J9	Grigio Martellato Cod. 32
							
Luxury Black Cod. J3	Rame Martellato Cod. J4						

CLASSIC


Deep Blue Cod. 2F

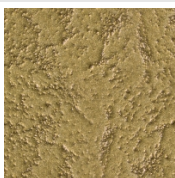
SURFACES



Taftah Argento
Cod. K4



Taftah Platino
Cod. K3



Taftah Oro
Cod. K2



Grey Shadow
Cod. X6

The Colors used in this folder are not considered binding. The different technological painting processes and the materials used for the realization can not have a perfect color match with the delivered product. Irsap company reserves the right to introduce at any time whatever modifications necessary to the improvement of the product.