

*The Tesi Runner model's sinuosity is its distinctive feature and makes dynamism the absolute protagonist in every room.*



Tesi Runner, Vertical, 12 elements, Hight 1802 mm, Lenght 564 mm, Brown - RAL 8017

## Construction features

- sheet steel tubes with diameter 25 mm;
- moulded sheet steel manifolds;
- element length 45 mm;
- manifold top and bottom end threads 1/2" G right;
- maximum allowed working pressure 8 bar;
- maximum allowed working temperature 95°C.

## Standard equipment

- Kit for fixing to the wall in a finish coordinated with the radiator
- Hydraulic connection kit (valve and lockshield valve) in a finish coordinated with the radiator, equipped with copper fittings (12, 14 mm diameter) and multilayer pipes (14 x 2 thick and 16 x 2 thick)
- Chrome-plated vent valve kit
- Kit of satin-finished pipe covers
- 1 1/2" end plug complete with chrome-plated cover

## Plus



## Technical data

Model	Depth (mm)	Height (mm)	Width (mm)	Conn. C. (mm)	Weight (kg)	Capacity (lt)	COM_PRODUCTS_TABLE_DATA_BTU	$\Delta t=50^{\circ}\text{C}$ (kcal/h)	$\Delta t=50^{\circ}\text{C}$ (Watt)	$\Delta t=40^{\circ}\text{C}$ (Watt)	$\Delta t=30^{\circ}\text{C}$ (Watt)	$\Delta t=20^{\circ}\text{C}$ (Watt)	Exponent
1800 08 el.	65,0	1802	391	1735	19,30	13,10	2.917,6	855,2	994,4	739,2	504,0	294,4	1,329
1800 10 el.	65,0	1802	481	1735	24,10	16,40	3.647,0	1.069,0	1.243,0	924,0	630,0	368,0	1,329
1800 12 el.	65,0	1802	571	1735	28,90	19,70	4.376,4	1.282,8	1.491,6	1.108,8	756,0	441,6	1,329
2000 08 el.	65,0	2002	391	1935	21,40	14,40	3.263,2	956,0	1.112,0	828,8	567,2	332,0	1,319
2000 10 el.	65,0	2002	481	1935	26,70	18,00	4.079,0	1.195,0	1.390,0	1.036,0	709,0	415,0	1,319
2000 12 el.	65,0	2002	571	1935	32,00	21,60	4.894,8	1.434,0	1.668,0	1.243,2	850,8	498,0	1,319

Thanks to the high performance of Irsap Tesi Runner radiators, the ideal  $\Delta t$  for low temperature projects is  $\Delta t$  at  $30^{\circ}\text{C}$ .

For  $\Delta t$  different from  $50^{\circ}\text{C}$  use the formula:  $Q=Q_n (\Delta t / 50)^n$

### Standard equipment

- Kit for fixing to the wall in a finish coordinated with the radiator
- Hydraulic connection kit (valve and lockshield valve) in a finish coordinated with the radiator, equipped with copper fittings (12, 14 mm diameter) and multilayer pipes (14 x 2 thick and 16 x 2 thick)
- Chrome-plated vent valve kit
- Kit of satin-finished pipe covers
- 1 1/2" end plug complete with chrome-plated cover

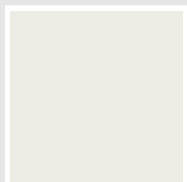
# Colors and Finishes

## STANDARD

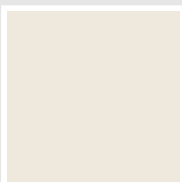


Bianco Standard  
Cod. 01

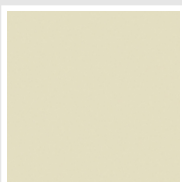
## CLASSIC



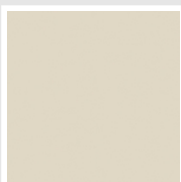
Bianco Edelweiss  
Opaco  
Cod. 34



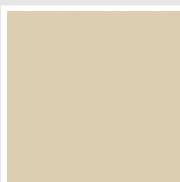
Bianco Whisper  
Peach  
Cod. 36



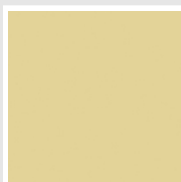
Avorio - RAL 1013  
Cod. 02



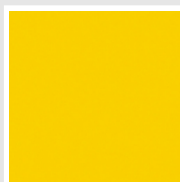
Jasmin Opaco  
Cod. 35



Beige Naturale  
Cod. 38



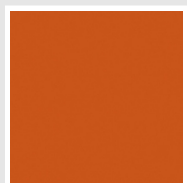
Beige Cream  
Cod. 26



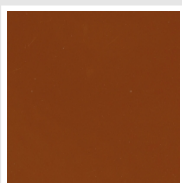
Giallo - RAL 1021  
Cod. 04



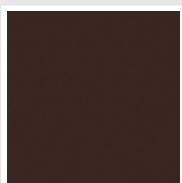
Giallo Melone - RAL  
1028  
Cod. E7



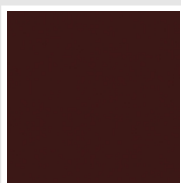
Arancio - RAL 2004  
Cod. 17



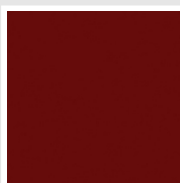
Marrone Ruggine -  
RAL 8004  
Cod. E1



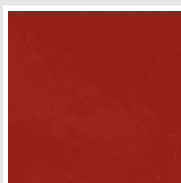
Marrone - RAL 8017  
Cod. 09



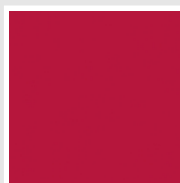
Vinaccia - RAL 3005  
Cod. H9



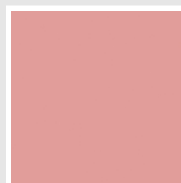
Amaranto - RAL 3003  
Cod. 06



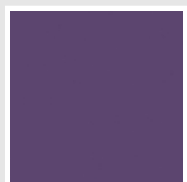
Rosso - RAL 3000  
Cod. 05



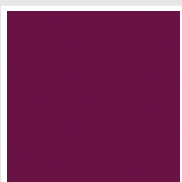
Rosso Fragola - RAL  
3018  
Cod. Y3



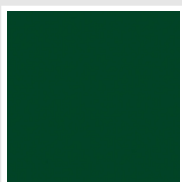
Rosa - RAL 3015  
Cod. R2



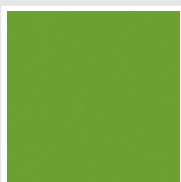
Lilla Bluastro - RAL  
4005  
Cod. R3



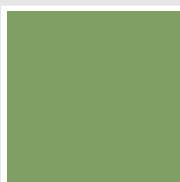
Porpora Traffico -  
RAL 4006  
Cod. R6



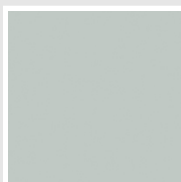
Verde Bosco - RAL  
6005  
Cod. 19



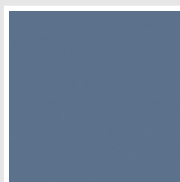
Verde Erba - RAL  
6018  
Cod. N3



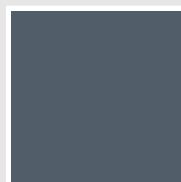
Verde Salvia - RAL  
6021  
Cod. E6



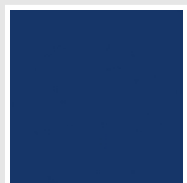
Verde Greenwich  
Cod. 28



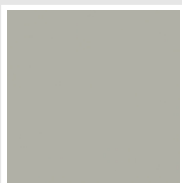
Blu Pastello - RAL  
5024  
Cod. G7



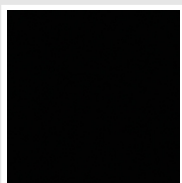
Blu Colomba - RAL  
5014  
Cod. G9



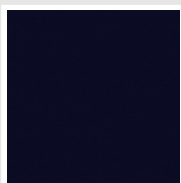
Blu Hewi  
Cod. 11



Grigio Manhattan  
Cod. 03

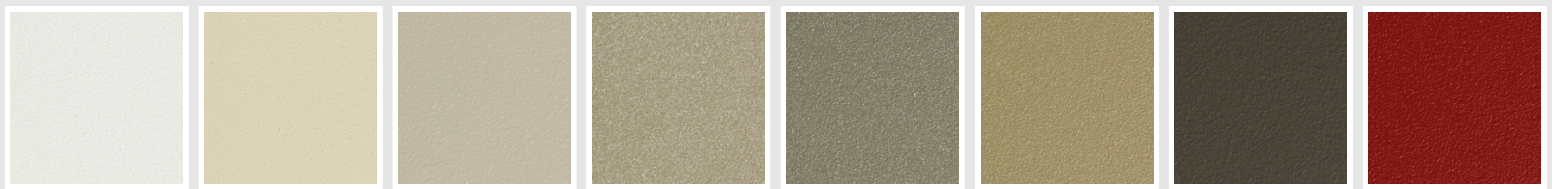


Nero - RAL 9005  
Cod. 10



Deep Blue  
Cod. 2F

## SPECIAL



Bianco Perla  
Cod. 16

Quartz 1  
Cod. 1C

Sablé  
Cod. Y4

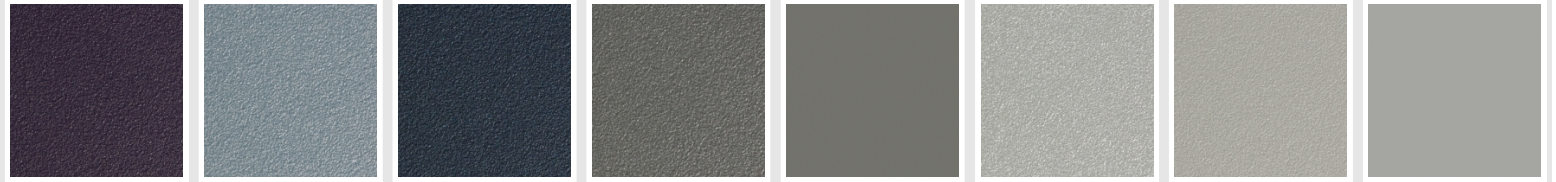
Quartz 2  
Cod. 2C

Sunstone  
Cod. 2D

Petra  
Cod. 3D

Bruno Tabacco  
Cod. 1B

Flame Red  
Cod. 7D



Purple Blue  
Cod. 1D

Azurite  
Cod. 6D

Azurite 3  
Cod. 6C

Grigio Medio  
Cod. 4D

Grigio Titanio  
Metallizzato - RAL  
9023  
Cod. L3

Grigio Silver  
Cod. 5D

Grigio Perla  
Cod. L6

Grigio Alluminio -  
RAL 9006  
Cod. B4



Nero Grafite  
Cod. 18

Grigio Quarzo  
Cod. 31

Nero Satinato  
Cod. 30

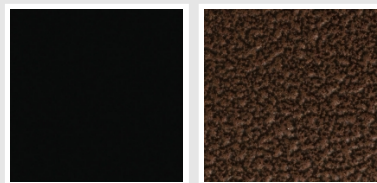
Luxury White  
Cod. J7

Bianco Opaco  
Cod. J8

Nero Opaco  
Cod. K1

Bronzo  
Cod. J9

Grigio Martellato  
Cod. 32



Luxury Black  
Cod. J3

Flame Martellato  
Cod. J4

## SURFACES



Trattamento Loft  
Cod. TR

Taftah Argento  
Cod. K4

Taftah Platino  
Cod. K3

Taftah Oro  
Cod. K2

Grey Shadow  
Cod. X6

The Colors used in this folder are not considered binding. The different technological painting processes and the materials used for the realization can not have a perfect color match with the delivered product. Irsap company reserves the right to introduce at any time whatever modifications necessary to the improvement of the product.