

*The perfect position for the Tesi Cruise is above the bathtub. The curved pipes create a unique towel holder with strong visual impact that is particularly suited for the bathroom.*



Tesi Cruise, 8 elements, Hight 384 mm, Lenght 1082 mm, Quartz 2

## Construction features

sheet steel tubes with diameter 25 mm;  
moulded sheet steel manifolds;  
element length 45 mm;  
manifold top and bottom end threads 1/2" G right;  
maximum allowed working pressure 8 bar;  
maximum allowed working temperature 95°C.

## Standard equipment

Kit for fixing to the wall in a finish coordinated with the radiator  
Hydraulic connection kit (valve and lockshield valve) in a finish coordinated with the radiator, equipped with copper fittings (12, 14 mm diameter) and multilayer pipes (14 x 2 thick and 16 x 2 thick)  
Chrome-plated vent valve kit  
Kit of satin-finished pipe covers  
1 1/2" end plug complete with chrome-plated cover  
N.B. The valves provided are a valve and lockshield valve in a angle version.

## Plus



## Technical data

Model	Depth (mm)	Height (mm)	Width (mm)	Conn. C. (mm)	Weight (kg)	Capacity (lt)	COM_PRODUCTS_TABLE_DATA_BTU	$\Delta t=50^{\circ}\text{C}$ (kcal/h)	$\Delta t=50^{\circ}\text{C}$ (Watt)	$\Delta t=40^{\circ}\text{C}$ (Watt)	$\Delta t=30^{\circ}\text{C}$ (Watt)	$\Delta t=20^{\circ}\text{C}$ (Watt)	Exponent
1500 08 el.	145,0	384	1502	1435	16,00	11,20	2.417,6	708,8	824,0	612,0	416,8	243,2	1,332
1800 08 el.	145,0	384	1802	1735	19,30	13,10	2.917,6	855,2	994,4	739,2	504,0	294,4	1,329

Thanks to the high performance of Irsap Tesi Cruise radiators, the ideal  $\Delta t$  for low temperature projects is  $\Delta t$  at  $30^{\circ}\text{C}$ .

For  $\Delta t$  different from  $50^{\circ}\text{C}$  use the formula:  $Q=Q_n (\Delta t / 50)^n$

### Standard equipment

- Kit for fixing to the wall in a finish coordinated with the radiator
- Hydraulic connection kit (valve and lockshield valve) in a finish coordinated with the radiator, equipped with copper fittings (12, 14 mm diameter) and multilayer pipes (14 x 2 thick and 16 x 2 thick)
- Chrome-plated vent valve kit
- Kit of satin-finished pipe covers
- 1 1/2" end plug complete with chrome-plated cover N.B. The valves provided are a valve and lockshield valve in a angle version.

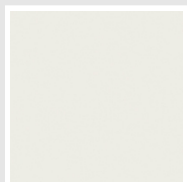
# Colors and Finishes

## STANDARD

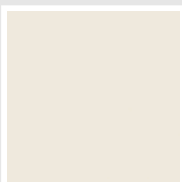


Bianco Standard  
Cod. 01

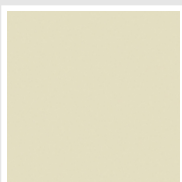
## CLASSIC



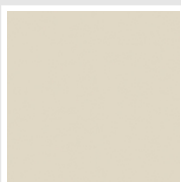
Bianco Edelweiss  
Opaco  
Cod. 34



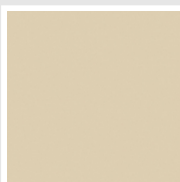
Bianco Whisper  
Peach  
Cod. 36



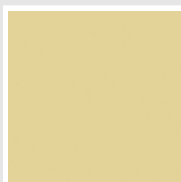
Avorio - RAL 1013  
Cod. 02



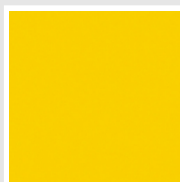
Jasmin Opaco  
Cod. 35



Beige Naturale  
Cod. 38



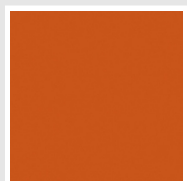
Beige Cream  
Cod. 26



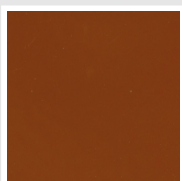
Giallo - RAL 1021  
Cod. 04



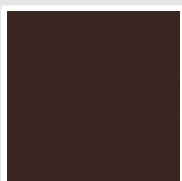
Giallo Melone - RAL  
1028  
Cod. E7



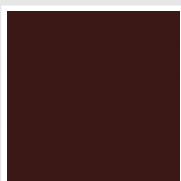
Arancio - RAL 2004  
Cod. 17



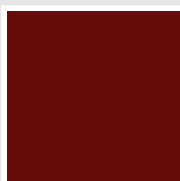
Marrone Ruggine -  
RAL 8004  
Cod. E1



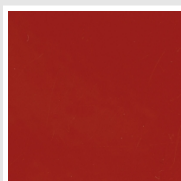
Marrone - RAL 8017  
Cod. 09



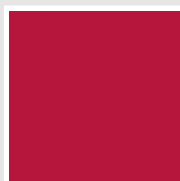
Vinaccia - RAL 3005  
Cod. H9



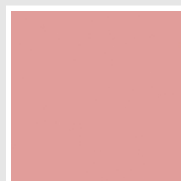
Amaranto - RAL 3003  
Cod. 06



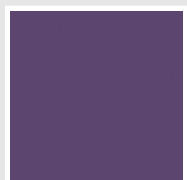
Rosso - RAL 3000  
Cod. 05



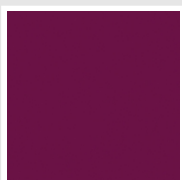
Rosso Fragola - RAL  
3018  
Cod. Y3



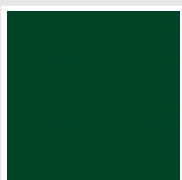
Rosa - RAL 3015  
Cod. R2



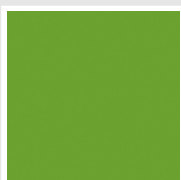
Lilla Bluastro - RAL  
4005  
Cod. R3



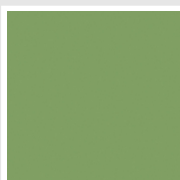
Porpora Traffico -  
RAL 4006  
Cod. R6



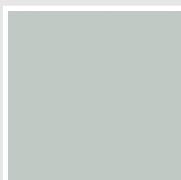
Verde Bosco - RAL  
6005  
Cod. 19



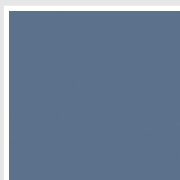
Verde Erba - RAL  
6018  
Cod. N3



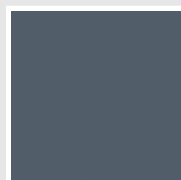
Verde Salvia - RAL  
6021  
Cod. E6



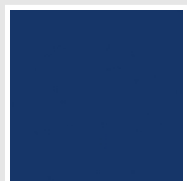
Verde Greenwich  
Cod. 28



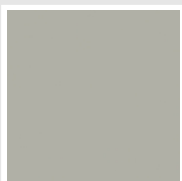
Blu Pastello - RAL  
5024  
Cod. G7



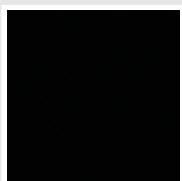
Blu Colomba - RAL  
5014  
Cod. G9



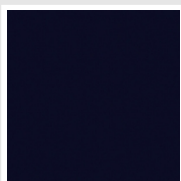
Blu Hewi  
Cod. 11



Grigio Manhattan  
Cod. 03

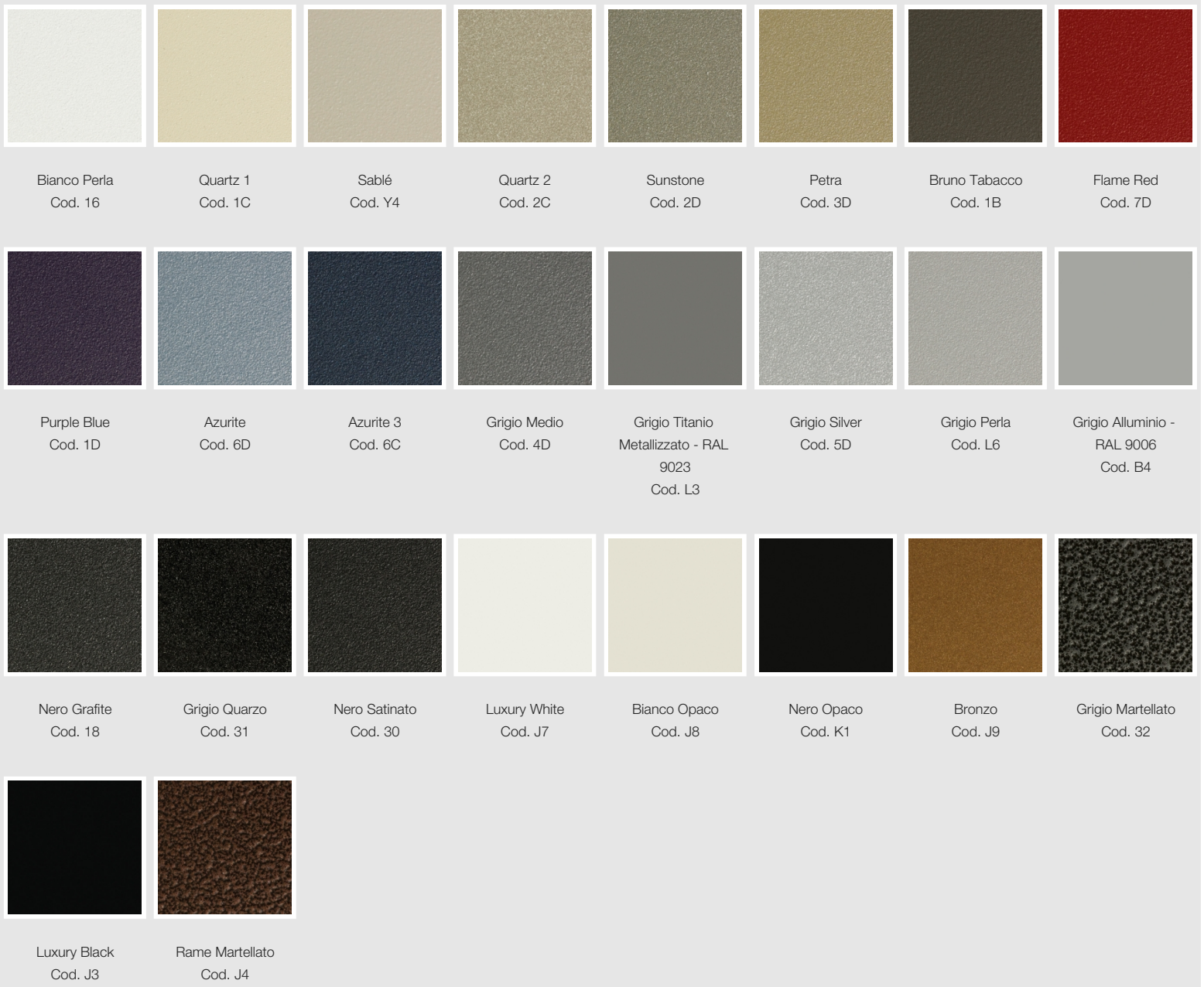


Nero - RAL 9005  
Cod. 10



Deep Blue  
Cod. 2F

## SPECIAL



## SURFACES



The Colors used in this folder are not considered binding. The different technological painting processes and the materials used for the realization can not have a perfect color match with the delivered product. Irsap company reserves the right to introduce at any time whatever modifications necessary to the improvement of the product.