

Tesi Chrome-plated

The rounded lines of the Tesi radiator match the reflections of the chrome-plated finish. The Tesi Chrome Plated model reinterprets the heating element concept to make it play the leading role and provide an object of desire, a catalyst for the whole.



Tesi Cromato, 10 elements, Hight 2000 mm, Lenght 474 mm, Chrome-plated

Construction features

- sheet steel tubes with diameter 25 mm;
- moulded sheet steel manifolds;
- element length 45 mm (element pitch)
- manifold top and bottom end threads 1/2" G right;
- maximum allowed working pressure 8 bar;
- maximum allowed working temperature 95°C.

Standard equipment

- Kit for fixing to the wall in a finish chrome-plated
- Hydraulic connection kit (valve and lockshield valve) in chrome-plated finish, equipped with copper fittings (12, 14 mm diameter) and multilayer pipes (14 x 2 thick and 16 x 2 thick)
- Chrome-plated vent valve kit
- Kit of chrome-plated finished pipe covers
- 1 1/2" end plug complete with chrome-plated cover
- N.B. The valves provided are a valve and lockshield valve in a angle version.

Plus



Technical data

| Model | Deph (mm) | Height (mm) | Width (mm) | Conn. C. (mm) | Weigth (kg) | Capacity (lt) | COM_PRODUCTS_TABLE_DATA_BTU | Δt=50°C (kcal/h) | Δt=50°C (Watt) | Δt=40°C (Watt) | Δt=30°C (Watt) | Δt=20°C (Watt) | Exponent |
|-------------|-----------|-------------|------------|---------------|-------------|---------------|-----------------------------|------------------|----------------|----------------|----------------|----------------|----------|
| RG2 | | | | | | | | | | | | | |
| 1800 08 el. | 65,0 | 1802 | 384 | 1735 | 26,60 | 13,10 | 2.713,6 | 684,0 | 795,2 | 591,2 | 403,2 | 235,2 | 1,329 |
| 1800 10 el. | 65,0 | 1802 | 474 | 1735 | 33,20 | 16,40 | 3.392,0 | 855,0 | 994,0 | 739,0 | 504,0 | 294,0 | 1,329 |
| 1800 12 el. | 65,0 | 1802 | 564 | 1735 | 39,80 | 19,70 | 4.070,4 | 1.026,0 | 1.192,8 | 886,8 | 604,8 | 352,8 | 1,329 |
| 2000 08 el. | 65,0 | 2002 | 384 | 1935 | 28,60 | 14,40 | 3.035,2 | 764,8 | 889,6 | 662,4 | 453,6 | 265,6 | 1,319 |
| 2000 10 el. | 65,0 | 2002 | 474 | 1935 | 35,80 | 18,00 | 3.794,0 | 956,0 | 1.112,0 | 828,0 | 567,0 | 332,0 | 1,319 |
| 2000 12 el. | 65,0 | 2002 | 564 | 1935 | 43,00 | 21,60 | 4.552,8 | 1.147,2 | 1.334,4 | 993,6 | 680,4 | 398,4 | 1,319 |
| RG3 | | | | | | | | | | | | | |
| 1800 08 el. | 101,0 | 1802 | 384 | 1735 | 35,60 | 19,40 | 3.688,0 | 929,6 | 1.080,8 | 804,0 | 549,6 | 320,8 | 1,325 |
| 1800 10 el. | 101,0 | 1802 | 474 | 1735 | 44,50 | 24,30 | 4.610,0 | 1.162,0 | 1.351,0 | 1.005,0 | 687,0 | 401,0 | 1,325 |
| 1800 12 el. | 101,0 | 1802 | 564 | 1735 | 53,40 | 29,20 | 5.532,0 | 1.394,4 | 1.621,2 | 1.206,0 | 824,4 | 481,2 | 1,325 |
| 2000 08 el. | 101,0 | 2002 | 384 | 1935 | 38,70 | 21,40 | 4.189,6 | 1.056,0 | 1.228,0 | 915,2 | 626,4 | 367,2 | 1,318 |
| 2000 10 el. | 101,0 | 2002 | 474 | 1935 | 48,40 | 26,80 | 5.237,0 | 1.320,0 | 1.535,0 | 1.144,0 | 783,0 | 459,0 | 1,318 |
| 2000 12 el. | 101,0 | 2002 | 564 | 1935 | 58,10 | 32,20 | 6.284,4 | 1.584,0 | 1.842,0 | 1.372,8 | 939,6 | 550,8 | 1,318 |

Thanks to the high performance of Irsap Tesi Chrome-Plated radiators, the ideal Δt for low temperature projects is Δt at 30°C.

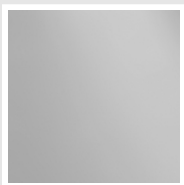
For Δt different from 50°C use the formula: $Q=Q_n (\Delta t / 50)^n$

Standard equipment

- Kit for fixing to the wall in a finish chrome-plated
- Hydraulic connection kit (valve and lockshield valve) in chrome-plated finish, equipped with copper fittings (12, 14 mm diameter) and multilayer pipes (14 x 2 thick and 16 x 2 thick)
- Chrome-plated vent valve kit
- Kit of chrome-plated finished pipe covers
- 1 1/2" end plug complete with chrome-plated cover

N.B. The valves provided are a valve and lockshield valve in a angle version.

SURFACES



Cromato

Cod. 50

The Colors used in this folder are not considered binding. The different technological painting processes and the materials used for the realization can not have a perfect color match with the delivered product. Irsap company reserves the right to introduce at any time whatever modifications necessary to the improvement of the product.