



Tesi 6, 50 elements, Height 600 mm, Length 1800 mm, Standard White,

## Construction features

tubes made of 25 mm diameter sheet steel  
manifolds made of pressed sheet steel  
elements 45 mm long (element pitch)  
threading 1"1/4 G right and left on top and bottom manifold  
maximum working pressure 8 bar  
maximum working temperature 95°C

## Standard equipment

4 connections with reductions 1 "1/4 to 1/2"  
for Tesi white and colored, mounted on the radiator  
4 Universal brackets for Tesi (except for very small batteries)  
1 1/2" air vent  
1 cover for 1/2" blind plug

## Certifications



## Plus



## Technical data

Model	Depth (mm)	Height (mm)	Conn. C. (mm)	Weight (kg)	Capacity (lt)	COM_PRODUCTS_TABLE_DATA_BTU	Δt=50°C (kcal/h)	Δt=50°C (Watt)	Δt=40°C (Watt)	Δt=30°C (Watt)	Δt=20°C (Watt)	Exponent
200	215,0	200	127	0,97	0,86	109,7	32,1	37,4	27,5	18,5	10,6	1,374
300	215,0	300	235	1,35	1,13	178,1	52,2	60,7	45,5	31,4	18,6	1,293
350	215,0	350	285	1,53	1,25	204,3	59,9	69,6	52,1	35,8	21,1	1,302
365	215,0	365	300	1,58	1,29	212,2	62,2	72,3	54,0	37,1	21,9	1,304
400	215,0	400	335	1,71	1,38	230,2	67,5	78,5	58,6	40,2	23,6	1,310
450	215,0	450	385	1,89	1,50	255,8	75,0	87,2	65,0	44,4	26,0	1,319
500	215,0	500	435	2,06	1,63	281,1	82,4	95,8	71,2	48,6	28,4	1,327
535	215,0	535	470	2,19	1,71	298,7	87,5	101,8	75,6	51,5	30,0	1,333
550	215,0	550	485	2,24	1,75	306,1	89,7	104,3	77,4	52,7	30,7	1,336
600	215,0	600	535	2,42	1,88	331,0	97,0	112,8	83,6	56,8	32,9	1,345
650	215,0	650	585	2,60	2,00	355,7	104,3	121,2	89,6	60,7	35,1	1,353
750	215,0	750	685	2,95	2,25	404,7	118,6	137,9	101,6	68,5	39,3	1,370
815	215,0	815	750	3,18	2,41	436,2	127,8	148,7	109,2	73,4	41,9	1,381
900	215,0	900	835	3,48	2,62	477,2	139,8	162,6	119,1	79,7	45,2	1,396
1000	215,0	1000	935	3,84	2,87	525,0	153,9	178,9	131,3	88,1	50,2	1,388
1200	215,0	1200	1135	4,89	3,33	619,8	181,6	211,2	155,5	104,8	60,1	1,371
1500	215,0	1500	1435	6,06	4,06	760,2	222,8	259,1	191,9	130,3	75,5	1,346
1800	215,0	1800	1735	7,22	4,80	899,3	263,6	306,5	227,6	155,1	90,3	1,334
2000	215,0	2000	1935	8,00	5,29	991,5	290,6	337,9	251,1	171,3	99,9	1,330
2200	215,0	2200	2135	8,78	5,78	1.083,5	317,6	369,3	274,6	187,5	109,5	1,327
2500	215,0	2500	2435	9,94	6,51	1.221,3	357,9	416,2	309,9	211,9	124,0	1,322

Thanks to the high performance of Irsap Tesi6 radiators, the ideal Δt for low temperature projects is Δt at 30°C.

For Δt different from 50°C use the formula:  $Q=Q_n (\Delta t / 50)^n$

**Standard equipment**

- 4 connections with reductions 1 "1/4 to 1/2" for Tesi white and colored, mounted on the radiator
- 4 Universal brackets for Tesi (except for very small batteries)
- 1 1/2" air vent
- 1 cover for 1/2" blind plug

# Data Set

Length (mm) sub>	NÂ° Elements	200	300	350	365	400	450	500	535	550	600	650	750	815	900	1000	1200	1500	1800	2000	2200	2500
90	2	Watt = 75	121	139	145	157	174	192	204	209	226	242	276	297	325	358	422	518	613	676	739	832
135	3	Watt = 112	182	209	217	235	262	287	305	313	338	364	414	446	488	537	634	777	919	1014	1108	1249
180	4	Watt = 149	243	279	289	314	349	383	407	417	451	485	552	595	650	716	845	1036	1226	1352	1477	1665
225	5	Watt = 187	304	348	362	392	436	479	509	522	564	606	690	743	813	895	1056	1295	1532	1690	1846	2081
270	6	Watt = 224	364	418	434	471	523	575	611	626	677	727	827	892	976	1074	1267	1554	1839	2027	2216	2497
315	7	Watt = 262	425	487	506	549	610	671	712	730	790	849	965	1041	1138	1252	1478	1813	2145	2365	2585	2913
360	8	Watt = 299	486	557	578	628	697	766	814	835	902	970	1103	1189	1301	1431	1690	2073	2452	2703	2954	3330
405	9	Watt = 336	546	627	651	706	785	862	916	939	1015	1091	1241	1338	1464	1610	1901	2332	2758	3041	3323	3746
450	10	Watt = 374	607	696	723	785	872	958	1018	1043	1128	1212	1379	1487	1626	1789	2112	2591	3065	3379	3693	4162
495	11	Watt = 411	668	766	795	863	959	1054	1120	1148	1241	1334	1517	1635	1789	1968	2323	2850	3371	3717	4062	4578
540	12	Watt = 448	729	836	868	942	1046	1149	1221	1252	1354	1455	1655	1784	1951	2147	2535	3109	3678	4055	4431	4994
585	13	Watt = 486	789	905	940	1020	1133	1245	1323	1356	1467	1576	1793	1933	2114	2326	2746	3368	3984	4393		
630	14	Watt = 523	850	975	1012	1098	1220	1341	1425	1461	1579	1697	1931	2081	2277	2505	2957	3627	4291	4731		
675	15	Watt = 561	911	1045	1084	1177	1308	1437	1527	1565	1692	1818	2069	2230	2439	2684	3168	3886	4597	5069		
720	16	Watt = 598	971	1114	1157	1255	1395	1533	1628	1669	1805	1940	2207	2379	2602	2863						
765	17	Watt = 635	1032	1184	1229	1334	1482	1628	1730	1774	1918	2061	2344	2527	2765	3042						
810	18	Watt = 673	1093	1254	1301	1412	1569	1724	1832	1878	2031	2182	2482	2676	2927	3221						
855	19	Watt = 710	1153	1323	1374	1491	1656	1820	1934	1982	2143	2303	2620	2825	3090	3399						
900	20	Watt = 747	1214	1393	1446	1569	1743	1916	2036	2087	2256	2425	2758	2973	3252	3578						
945	21	Watt = 785	1275	1462	1518	1648	1831	2012	2137	2191	2369	2546	2896	3122	3415	3757						
990	22	Watt = 822	1336	1532	1591	1726	1918	2107	2239	2295	2482	2667	3034	3271	3578	3936						

1035	23	Watt =	860	1396	1602	1663	1805	2005	2203	2341	2400	2595	2788	3172	3419	3740	4115
1080	24	Watt =	897	1457	1671	1735	1883	2092	2299	2443	2504	2707	2910	3310	3568	3903	4294
1125	25	Watt =	934	1518	1741	1808	1961	2179	2395	2544	2608	2820	3031	3448	3716	4066	4473
1170	26	Watt =	972	1578	1811	1880	2040	2266	2491	2646	2713	2933	3152				
1215	27	Watt =	1009	1639	1880	1952	2118	2354	2586	2748	2817	3046	3273				
1260	28	Watt =	1046	1700	1950	2024	2197	2441	2682	2850	2921	3159	3394				
1305	29	Watt =	1084	1761	2020	2097	2275	2528	2778	2952	3026	3271	3516				
1350	30	Watt =	1121	1821	2089	2169	2354	2615	2874	3053	3130	3384	3637				
1395	31	Watt =	1158	1882	2159	2241	2432	2702	2969	3155	3234	3497	3758				
1440	32	Watt =	1196	1943	2228	2314	2511	2789	3065	3257	3339	3610	3879				
1485	33	Watt =	1233	2003	2298	2386	2589	2877	3161	3359	3443	3723	4001				
1530	34	Watt =	1271	2064	2368	2458	2668	2964	3257	3461	3547	3836	4122				
1575	35	Watt =	1308	2125	2437	2530	2746	3051	3353	3562	3652	3948	4243				
1620	36	Watt =	1345	2186	2507	2603	2825	3138	3448	3664	3756						
1665	37	Watt =	1383	2246	2577	2675	2903	3225	3544	3766	3860						
1710	38	Watt =	1420	2307	2646	2747	2981	3312	3640	3868	3965						
1755	39	Watt =	1457	2368	2716	2820	3060	3400	3736	3969	4069						
1800	40	Watt =	1495	2428	2786	2892	3138	3487	3832	4071	4173						

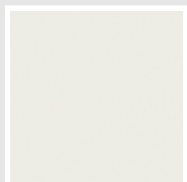
# Colors and Finishes

## STANDARD

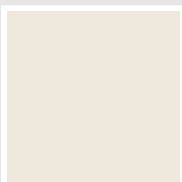


Bianco Standard  
Cod. 01

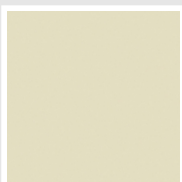
## CLASSIC



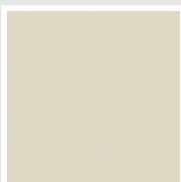
Bianco Edelweiss  
Opaco  
Cod. 34



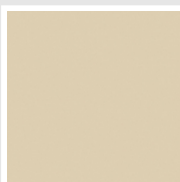
Bianco Whisper  
Peach  
Cod. 36



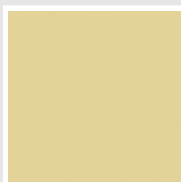
Avorio - RAL 1013  
Cod. 02



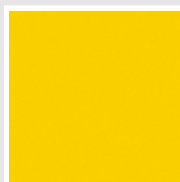
Jasmin Opaco  
Cod. 35



Beige Naturale  
Cod. 38



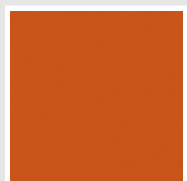
Beige Cream  
Cod. 26



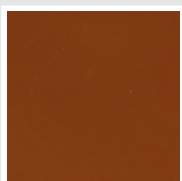
Giallo - RAL 1021  
Cod. 04



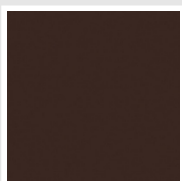
Giallo Melone - RAL  
1028  
Cod. E7



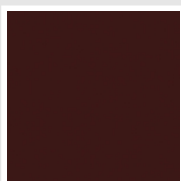
Arancio - RAL 2004  
Cod. 17



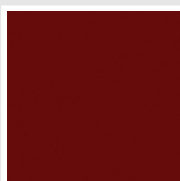
Marrone Ruggine -  
RAL 8004  
Cod. E1



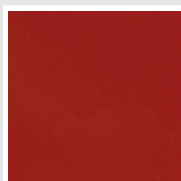
Marrone - RAL 8017  
Cod. 09



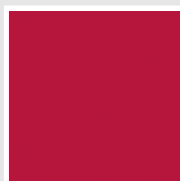
Vinaccia - RAL 3005  
Cod. H9



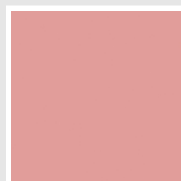
Amaranto - RAL 3003  
Cod. 06



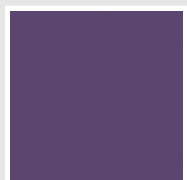
Rosso - RAL 3000  
Cod. 05



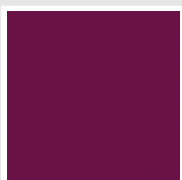
Rosso Fragola - RAL  
3018  
Cod. Y3



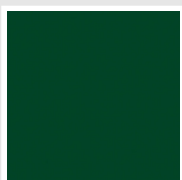
Rosa - RAL 3015  
Cod. R2



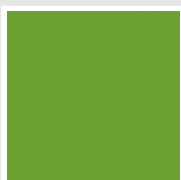
Lilla Bluastro - RAL  
4005  
Cod. R3



Porpora Traffico -  
RAL 4006  
Cod. R6



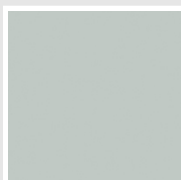
Verde Bosco - RAL  
6005  
Cod. 19



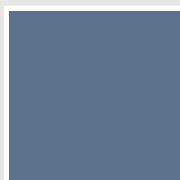
Verde Erba - RAL  
6018  
Cod. N3



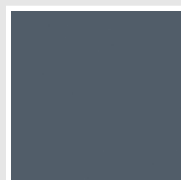
Verde Salvia - RAL  
6021  
Cod. E6



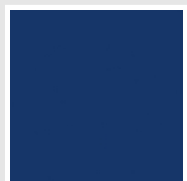
Verde Greenwich  
Cod. 28



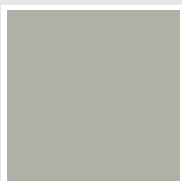
Blu Pastello - RAL  
5024  
Cod. G7



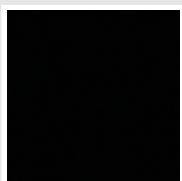
Blu Colomba - RAL  
5014  
Cod. G9



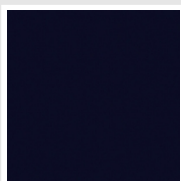
Blu Hewi  
Cod. 11



Grigio Manhattan  
Cod. 03

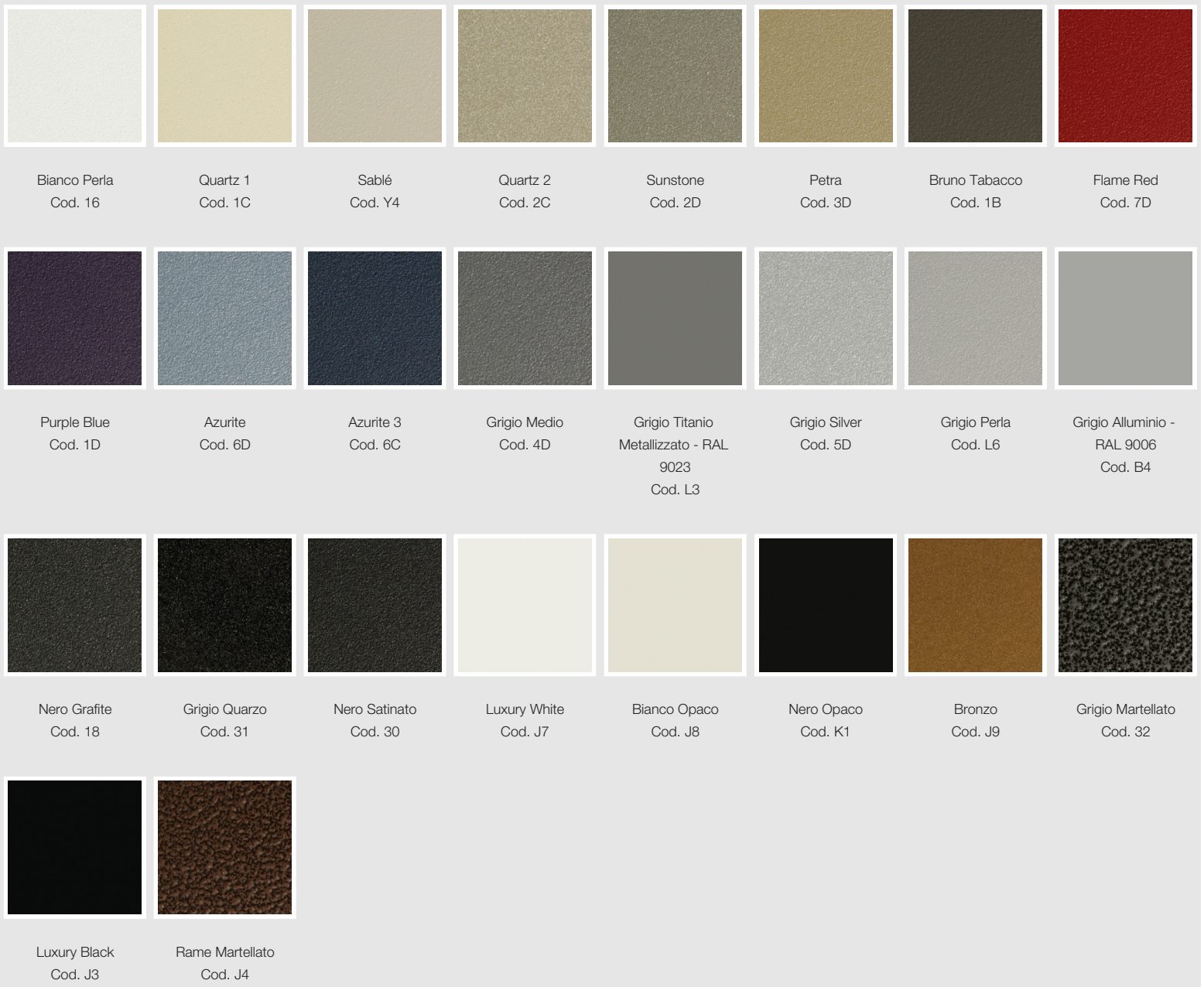


Nero - RAL 9005  
Cod. 10



Deep Blue  
Cod. 2F

## SPECIAL



## SURFACES



The Colors used in this folder are not considered binding. The different technological painting processes and the materials used for the realization can not have a perfect color match with the delivered product. Irsap company reserves the right to introduce at any time whatever modifications necessary to the improvement of the product.