



Tesi 5, 14 elements, Hight 2000 mm, Lenght 630 mm, Quartz 2

## Construction features

tubes made of 25 mm diameter sheet steel  
manifolds made of pressed sheet steel  
elements 45 mm long (element pitch)  
threading 1"1/4 G right and left on top and bottom manifold  
maximum working pressure 8 bar  
maximum working temperature 95°C

## Standard equipment

4 connections with reductions 1 "1/4 to 1/2"  
for Tesi white and colored, mounted on the radiator  
4 Universal brakets for Tesi (except for very small batteries)  
1 1/2" air vent  
1 cover for 1/2" blind plug

## Certifications



## Plus



## Technical data

Model	Depth (mm)	Height (mm)	Conn. C. (mm)	Weight (kg)	Capacity (lt)	COM_PRODUCTS_TABLE_DATA_BTU	Δt=50°C (kcal/h)	Δt=50°C (Watt)	Δt=40°C (Watt)	Δt=30°C (Watt)	Δt=20°C (Watt)	Exponent
200	177,0	200	127	0,81	0,73	93,0	27,2	31,7	23,4	15,9	9,2	1,350
300	177,0	300	235	1,13	0,95	150,8	44,2	51,4	38,7	26,8	16,0	1,276
350	177,0	350	285	1,28	1,05	173,2	50,8	59,0	44,3	30,6	18,2	1,283
365	177,0	365	300	1,32	1,08	179,8	52,7	61,3	46,0	31,8	18,9	1,286
400	177,0	400	335	1,43	1,16	195,2	57,2	66,5	49,9	34,4	20,4	1,291
450	177,0	450	385	1,58	1,26	217,1	63,6	74,0	55,4	38,1	22,5	1,299
500	177,0	500	435	1,72	1,36	238,7	70,0	81,3	60,8	41,7	24,6	1,307
535	177,0	535	470	1,83	1,44	253,7	74,4	86,5	64,5	44,2	26,0	1,312
550	177,0	550	485	1,87	1,47	260,1	76,2	88,7	66,1	45,3	26,6	1,315
600	177,0	600	535	2,02	1,57	281,4	82,5	95,9	71,4	48,8	28,5	1,322
650	177,0	650	585	2,17	1,68	302,5	88,7	103,1	76,6	52,2	30,5	1,330
750	177,0	750	685	2,46	1,88	344,3	100,9	117,3	86,9	59,0	34,2	1,346
815	177,0	815	750	2,66	2,02	371,3	108,8	126,5	93,5	63,3	36,5	1,356
900	177,0	900	835	2,91	2,20	406,3	119,1	138,5	102,0	68,8	39,5	1,369
1000	177,0	1000	935	3,20	2,40	447,2	131,1	152,4	112,4	75,9	43,7	1,364
1200	177,0	1200	1135	4,08	2,78	528,2	154,8	180,0	133,1	90,2	52,1	1,353
1500	177,0	1500	1435	5,05	3,40	648,0	189,9	220,8	163,9	111,6	64,9	1,337
1800	177,0	1800	1735	6,02	4,01	766,6	224,7	261,2	194,3	132,6	77,4	1,327
2000	177,0	2000	1935	6,67	4,42	845,1	247,7	288,0	214,4	146,5	85,7	1,323
2200	177,0	2200	2135	7,32	4,82	923,3	270,6	314,6	234,4	160,4	93,9	1,320
2500	177,0	2500	2435	8,29	5,44	1.040,2	304,9	354,5	264,4	181,2	106,4	1,314

Thanks to the high performance of Irsap Tesi5 radiators, the ideal Δt for low temperature projects is Δt at 30°C.

For Δt different from 50°C use the formula:  $Q=Q_n (\Delta t / 50)^n$

**Standard equipment**

- 4 connections with reductions 1 "1/4 to 1/2" for Tesi white and colored, mounted on the radiator
- 4 Universal brackets for Tesi (except for very small batteries)
- 1 1/2" air vent
- 1 cover for 1/2" blind plug

# Data Set

Length (mm) sub>	NÂ° Elements	200	300	350	365	400	450	500	535	550	600	650	750	815	900	1000	1200	1500	1800	2000	2200	2500
90	2	Watt = 63	103	118	123	133	148	163	173	177	192	206	235	253	277	305	360	442	522	576	629	709
135	3	Watt = 95	154	177	184	200	222	244	259	266	288	309	352	380	415	457	540	663	784	864	944	1063
180	4	Watt = 127	206	236	245	266	296	325	346	355	384	412	469	506	554	610	720	883	1045	1152	1259	1418
225	5	Watt = 158	257	295	306	333	370	407	432	443	479	515	587	633	692	762	900	1104	1306	1440	1573	1772
270	6	Watt = 190	308	354	368	399	444	488	519	532	575	619	704	759	831	914	1080	1325	1568	1728	1888	2127
315	7	Watt = 222	360	413	429	466	518	569	605	621	671	722	821	886	969	1067	1260	1546	1829	2016	2203	2481
360	8	Watt = 253	411	472	490	532	592	651	692	709	767	825	939	1012	1108	1219	1440	1767	2090	2304	2517	2836
405	9	Watt = 285	463	531	552	599	666	732	778	798	863	928	1056	1139	1246	1372	1620	1988	2351	2592	2832	3190
450	10	Watt = 317	514	590	613	665	740	813	865	886	959	1031	1174	1265	1385	1524	1800	2208	2612	2880	3146	3545
495	11	Watt = 348	565	649	674	732	814	895	951	975	1055	1134	1291	1392	1523	1677	1980	2429	2874	3168	3461	3899
540	12	Watt = 380	617	708	735	798	888	976	1038	1064	1151	1237	1408	1518	1662	1829	2160	2650	3135	3456	3776	4254
585	13	Watt = 412	668	767	797	865	962	1057	1124	1152	1247	1340	1526	1645	1800	1981	2340	2871	3396	3744		
630	14	Watt = 444	720	826	858	932	1036	1139	1210	1241	1342	1443	1643	1772	1939	2134	2520	3092	3658	4032		
675	15	Watt = 475	771	885	919	998	1110	1220	1297	1330	1438	1546	1760	1898	2077	2286	2700	3313	3919	4320		
720	16	Watt = 507	822	944	980	1065	1184	1301	1383	1418	1534	1649	1878	2025	2216	2439	2880					
765	17	Watt = 539	874	1003	1042	1131	1258	1383	1470	1507	1630	1753	1995	2151	2354	2591	3060					
810	18	Watt = 570	925	1062	1103	1198	1332	1464	1556	1596	1726	1856	2112	2278	2493	2743	3240					
855	19	Watt = 602	977	1121	1164	1264	1406	1545	1643	1684	1822	1959	2230	2404	2631	2896						
900	20	Watt = 634	1028	1180	1226	1331	1480	1627	1729	1773	1918	2062	2347	2531	2770	3048						
945	21	Watt = 665	1079	1239	1287	1397	1554	1708	1816	1862	2014	2165	2464	2657	2908	3201						
990	22	Watt = 697	1131	1298	1348	1464	1628	1789	1902	1950	2110	2268	2582	2784	3047	3353						

1035	23	Watt =	729	1182	1357	1409	1530	1702	1871	1989	2039	2205	2371	2699	2910	3185	3505
1080	24	Watt =	760	1234	1416	1471	1597	1776	1952	2075	2128	2301	2474	2816	3037	3324	3658
1125	25	Watt =	792	1285	1476	1532	1664	1850	2034	2162	2216	2397	2577	2934	3164	3462	3810
1170	26	Watt =	824	1336	1535	1593	1730	1923	2115	2248	2305	2493	2680	3051	3290	3600	3963
1215	27	Watt =	855	1388	1594	1655	1797	1997	2196	2334	2394	2589	2783	3168	3417	3739	4115
1260	28	Watt =	887	1439	1653	1716	1863	2071	2278	2421	2482	2685	2887	3286	3543	3877	4267
1305	29	Watt =	919	1491	1712	1777	1930	2145	2359	2507	2571	2781	2990	3403	3670	4016	4420
1350	30	Watt =	950	1542	1771	1838	1996	2219	2440	2594	2660	2877	3093	3520	3796	4154	4572
1395	31	Watt =	982	1593	1830	1900	2063	2293	2522	2680	2748	2973	3196				
1440	32	Watt =	1014	1645	1889	1961	2129	2367	2603	2767	2837	3068	3299				
1485	33	Watt =	1045	1696	1948	2022	2196	2441	2684	2853	2925	3164	3402				
1530	34	Watt =	1077	1748	2007	2084	2262	2515	2766	2940	3014	3260	3505				
1575	35	Watt =	1109	1799	2066	2145	2329	2589	2847	3026	3103	3356	3608				
1620	36	Watt =	1140	1850	2125	2206	2395	2663	2928	3113	3191	3452	3711				
1665	37	Watt =	1172	1902	2184	2267	2462	2737	3010	3199	3280	3548	3814				
1710	38	Watt =	1204	1953	2243	2329	2529	2811	3091	3285	3369	3644	3917				
1755	39	Watt =	1236	2005	2302	2390	2595	2885	3172	3372	3457	3740	4021				
1800	40	Watt =	1267	2056	2361	2451	2662	2959	3254	3458	3546	3836	4124				

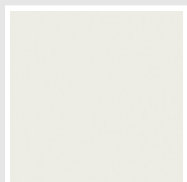
# Colors and Finishes

## STANDARD

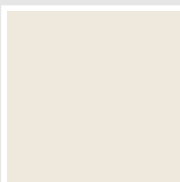


Bianco Standard  
Cod. 01

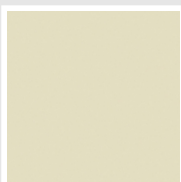
## CLASSIC



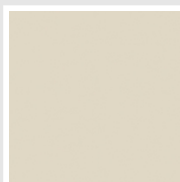
Bianco Edelweiss  
Opaco  
Cod. 34



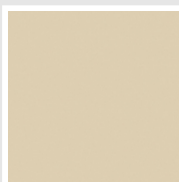
Bianco Whisper  
Peach  
Cod. 36



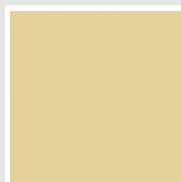
Avorio - RAL 1013  
Cod. 02



Jasmin Opaco  
Cod. 35



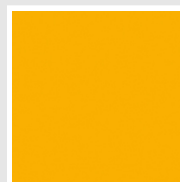
Beige Naturale  
Cod. 38



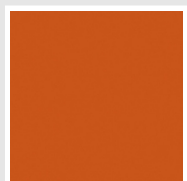
Beige Cream  
Cod. 26



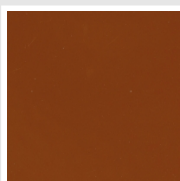
Giallo - RAL 1021  
Cod. 04



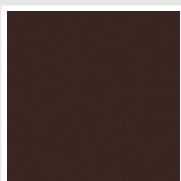
Giallo Melone - RAL  
1028  
Cod. E7



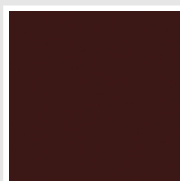
Arancio - RAL 2004  
Cod. 17



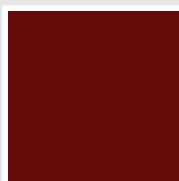
Marrone Ruggine -  
RAL 8004  
Cod. E1



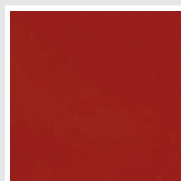
Marrone - RAL 8017  
Cod. 09



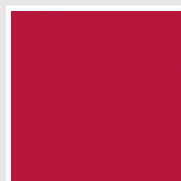
Vinaccia - RAL 3005  
Cod. H9



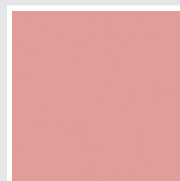
Amaranto - RAL 3003  
Cod. 06



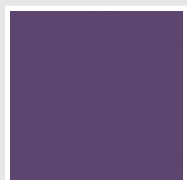
Rosso - RAL 3000  
Cod. 05



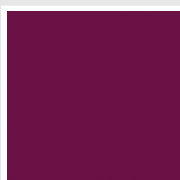
Rosso Fragola - RAL  
3018  
Cod. Y3



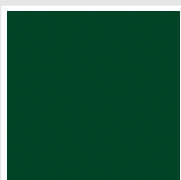
Rosa - RAL 3015  
Cod. R2



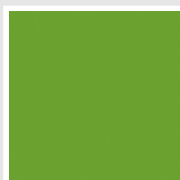
Lilla Bluastro - RAL  
4005  
Cod. R3



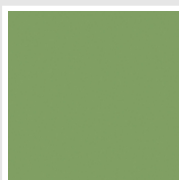
Porpora Traffico -  
RAL 4006  
Cod. R6



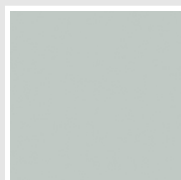
Verde Bosco - RAL  
6005  
Cod. 19



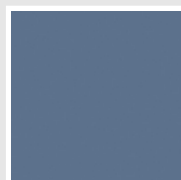
Verde Erba - RAL  
6018  
Cod. N3



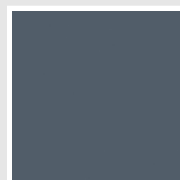
Verde Salvia - RAL  
6021  
Cod. E6



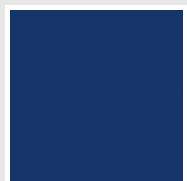
Verde Greenwich  
Cod. 28



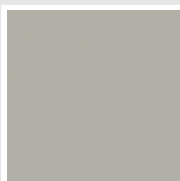
Blu Pastello - RAL  
5024  
Cod. G7



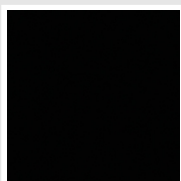
Blu Colomba - RAL  
5014  
Cod. G9



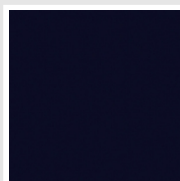
Blu Hewi  
Cod. 11



Grigio Manhattan  
Cod. 03

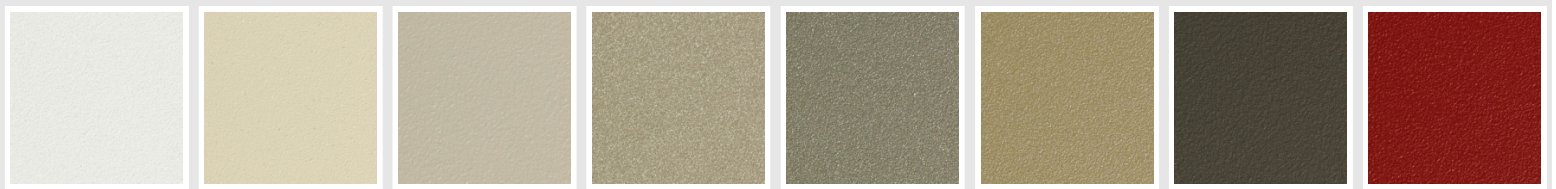


Nero - RAL 9005  
Cod. 10



Deep Blue  
Cod. 2F

## SPECIAL



Bianco Perla  
Cod. 16

Quartz 1  
Cod. 1C

Sablé  
Cod. Y4

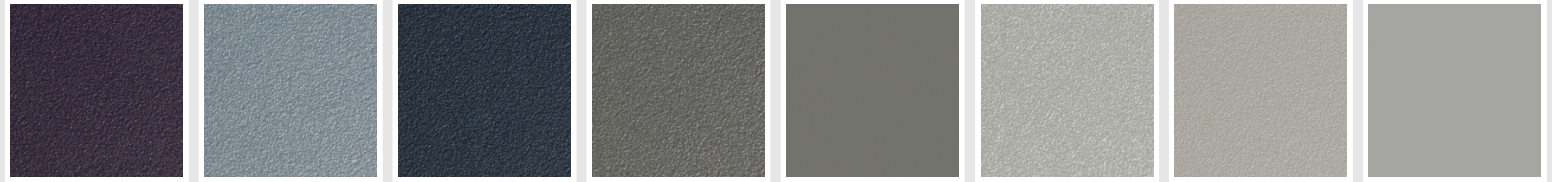
Quartz 2  
Cod. 2C

Sunstone  
Cod. 2D

Petra  
Cod. 3D

Bruno Tabacco  
Cod. 1B

Flame Red  
Cod. 7D



Purple Blue  
Cod. 1D

Azurite  
Cod. 6D

Azurite 3  
Cod. 6C

Grigio Medio  
Cod. 4D

Grigio Titanio  
Metallizzato - RAL  
9023  
Cod. L3

Grigio Silver  
Cod. 5D

Grigio Perla  
Cod. L6

Grigio Alluminio -  
RAL 9006  
Cod. B4



Nero Grafite  
Cod. 18

Grigio Quarzo  
Cod. 31

Nero Satinato  
Cod. 30

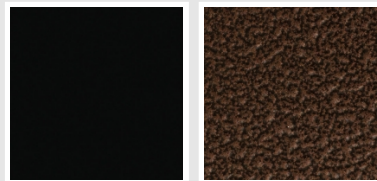
Luxury White  
Cod. J7

Bianco Opaco  
Cod. J8

Nero Opaco  
Cod. K1

Bronzo  
Cod. J9

Grigio Martellato  
Cod. 32



Luxury Black  
Cod. J3

Flame Martellato  
Cod. J4

## SURFACES



Trattamento Loft  
Cod. TR

Taftah Argento  
Cod. K4

Taftah Platino  
Cod. K3

Taftah Oro  
Cod. K2

Grey Shadow  
Cod. X6

The Colors used in this folder are not considered binding. The different technological painting processes and the materials used for the realization can not have a perfect color match with the delivered product. Irsap company reserves the right to introduce at any time whatever modifications necessary to the improvement of the product.