



Tesi 4, Vertical, 12 elements, Height 2000 mm, Length 540 mm, Red - RAL 3000

Construction features

tubes made of 25 mm diameter sheet steel
manifolds made of pressed sheet steel
elements 45 mm long (element pitch)
threading 1 1/4" G right and left on top and bottom manifold
maximum working pressure 8 bar
maximum working temperature 95°C

Standard equipment

4 connections with reductions 1 1/4" to 1/2"
for Tesi white and colored, mounted on the radiator
4 Universal brackets for Tesi (except for very small batteries)
1 1/2" air vent
1 cover for 1/2" blind plug

Certifications



Plus



Technical data

Model	Depth (mm)	Height (mm)	Conn. C. (mm)	Weight (kg)	Capacity (lt)	COM_PRODUCTS_TABLE_DATA_BTU	Δt=50°C (kcal/h)	Δt=50°C (Watt)	Δt=40°C (Watt)	Δt=30°C (Watt)	Δt=20°C (Watt)	Exponent
200	139,0	200	127	0,57	0,60	76,2	22,3	26,0	19,3	13,2	7,7	1,326
300	139,0	300	235	0,83	0,78	123,5	36,2	42,1	31,8	22,1	13,3	1,258
350	139,0	350	285	0,95	0,86	142,0	41,6	48,4	36,5	25,4	15,2	1,265
365	139,0	365	300	0,98	0,89	147,5	43,2	50,3	37,9	26,3	15,7	1,267
400	139,0	400	335	1,07	0,95	160,3	47,0	54,6	41,1	28,5	17,0	1,272
450	139,0	450	385	1,18	1,03	178,4	52,3	60,8	45,7	31,6	18,8	1,279
500	139,0	500	435	1,30	1,11	196,3	57,5	66,9	50,2	34,7	20,6	1,286
535	139,0	535	470	1,38	1,17	208,8	61,2	71,2	53,3	36,8	21,8	1,291
550	139,0	550	485	1,42	1,20	214,1	62,8	73,0	54,7	37,7	22,3	1,293
600	139,0	600	535	1,54	1,28	231,8	67,9	79,0	59,1	40,6	24,0	1,300
650	139,0	650	585	1,66	1,36	249,3	73,1	85,0	63,5	43,6	25,6	1,307
750	139,0	750	685	1,89	1,53	284,0	83,2	96,8	72,1	49,3	28,8	1,322
815	139,0	815	750	2,05	1,64	306,4	89,8	104,4	77,6	52,9	30,9	1,331
900	139,0	900	835	2,25	1,78	335,5	98,3	114,3	84,7	57,6	33,4	1,343
1000	139,0	1000	935	2,67	1,92	369,4	108,3	125,9	93,4	63,5	36,9	1,340
1200	139,0	1200	1135	3,19	2,25	436,6	128,0	148,8	110,5	75,2	43,8	1,335
1500	139,0	1500	1435	3,96	2,74	535,9	157,1	182,6	135,8	92,7	54,1	1,328
1800	139,0	1800	1735	4,74	3,23	633,9	185,8	216,0	160,9	110,0	64,4	1,321
2000	139,0	2000	1935	5,26	3,55	698,7	204,8	238,1	177,5	121,5	71,3	1,317
2200	139,0	2200	2135	5,78	3,88	763,0	223,6	260,0	194,0	133,0	78,1	1,312
2500	139,0	2500	2435	6,55	4,37	859,1	251,8	292,8	218,8	150,2	88,5	1,306

Thanks to the high performance of Irsap Tesi4 radiators, the ideal Δt for low temperature projects is Δt at 30°C.

For Δt different from 50°C use the formula: $Q=Q_n (\Delta t / 50)^n$

Standard equipment

- 4 connections with reductions 1 "1/4 to 1/2" for Tesi white and colored, mounted on the radiator
- 4 Universal brackets for Tesi (except for very small batteries)
- 1 1/2" air vent
- 1 cover for 1/2" blind plug

Data Set

Length (mm) sub>	NÂ° Elements	200	300	350	365	400	450	500	535	550	600	650	750	815	900	1000	1200	1500	1800	2000	2200	2500
90	2	Watt = 52	84	97	101	109	122	134	142	146	158	170	194	209	229	252	298	365	432	476	520	586
135	3	Watt = 78	126	145	151	164	182	201	213	219	237	255	290	313	343	378	446	548	648	714	780	878
180	4	Watt = 104	168	194	201	218	243	268	285	292	316	340	387	418	457	504	595	731	864	952	1040	1171
225	5	Watt = 130	210	242	251	273	304	334	356	365	395	425	484	522	572	630	744	913	1080	1190	1300	1464
270	6	Watt = 156	252	290	302	328	365	401	427	438	474	510	581	627	686	755	893	1096	1296	1429	1560	1757
315	7	Watt = 182	295	339	352	382	426	468	498	511	553	595	678	731	800	881	1042	1278	1512	1667	1820	2049
360	8	Watt = 208	337	387	402	437	486	535	569	584	632	680	774	835	915	1007	1190	1461	1728	1905	2080	2342
405	9	Watt = 234	379	436	452	492	547	602	640	657	711	765	871	940	1029	1133	1339	1644	1944	2143	2340	2635
450	10	Watt = 260	421	484	503	546	608	669	712	730	790	850	968	1044	1143	1259	1488	1826	2160	2381	2600	2928
495	11	Watt = 286	463	532	553	601	669	736	783	803	869	934	1065	1149	1258	1385	1637	2009	2376	2619	2860	3220
540	12	Watt = 312	505	581	603	655	729	803	854	876	948	1019	1161	1253	1372	1511	1785	2192	2592	2857	3120	3513
585	13	Watt = 338	547	629	654	710	790	870	925	948	1027	1104	1258	1357	1486	1637	1934	2374	2808	3095		
630	14	Watt = 364	589	677	704	765	851	937	996	1021	1106	1189	1355	1462	1601	1763	2083	2557	3024	3333		
675	15	Watt = 390	631	726	754	819	912	1004	1067	1094	1185	1274	1452	1566	1715	1888	2232	2739	3240	3572		
720	16	Watt = 416	673	774	804	874	973	1070	1138	1167	1264	1359	1549	1671	1829	2014	2381	2922	3456	3810		
765	17	Watt = 442	715	823	855	929	1033	1137	1210	1240	1343	1444	1645	1775	1944	2140	2529	3105	3673	4048		
810	18	Watt = 468	757	871	905	983	1094	1204	1281	1313	1422	1529	1742	1880	2058	2266	2678	3287	3889	4286		
855	19	Watt = 494	800	919	955	1038	1155	1271	1352	1386	1501	1614	1839	1984	2172	2392	2827	3470	4105	4524		
900	20	Watt = 520	842	968	1005	1092	1216	1338	1423	1459	1580	1699	1936	2088	2287	2518	2976	3653	4321	4762		
945	21	Watt = 546	884	1016	1056	1147	1277	1405	1494	1532	1659	1784	2033	2193	2401	2644	3125	3835	4537	5000		
990	22	Watt = 572	926	1065	1106	1202	1337	1472	1565	1605	1738	1869	2129	2297	2515	2770	3273	4018	4753	5238		

1035	23	Watt =	598	968	1113	1156	1256	1398	1539	1636	1678	1817	1954	2226	2402	2630	2896
1080	24	Watt =	624	1010	1161	1206	1311	1459	1606	1708	1751	1896	2039	2323	2506	2744	3022
1125	25	Watt =	650	1052	1210	1257	1366	1520	1673	1779	1824	1974	2124	2420	2610	2858	3148
1170	26	Watt =	675	1094	1258	1307	1420	1581	1739	1850	1897	2053	2209	2517	2715	2973	3273
1215	27	Watt =	701	1136	1307	1357	1475	1641	1806	1921	1970	2132	2294	2613	2819	3087	3399
1260	28	Watt =	727	1178	1355	1408	1529	1702	1873	1992	2043	2211	2379	2710	2924	3201	3525
1305	29	Watt =	753	1220	1403	1458	1584	1763	1940	2063	2116	2290	2464	2807	3028	3316	3651
1350	30	Watt =	779	1262	1452	1508	1639	1824	2007	2134	2189	2369	2548	2904	3133	3430	3777
1395	31	Watt =	805	1304	1500	1558	1693	1884	2074	2206	2262	2448	2633	3000			
1440	32	Watt =	831	1347	1548	1609	1748	1945	2141	2277	2335	2527	2718	3097			
1485	33	Watt =	857	1389	1597	1659	1802	2006	2208	2348	2408	2606	2803	3194			
1530	34	Watt =	883	1431	1645	1709	1857	2067	2275	2419	2481	2685	2888	3291			
1575	35	Watt =	909	1473	1694	1759	1912	2128	2342	2490	2554	2764	2973	3388			
1620	36	Watt =	935	1515	1742	1810	1966	2188	2408	2561	2627	2843	3058				
1665	37	Watt =	961	1557	1790	1860	2021	2249	2475	2633	2700	2922	3143				
1710	38	Watt =	987	1599	1839	1910	2076	2310	2542	2704	2772	3001	3228				
1755	39	Watt =	1013	1641	1887	1961	2130	2371	2609	2775	2845	3080	3313				
1800	40	Watt =	1039	1683	1936	2011	2185	2432	2676	2846	2918	3159	3398				

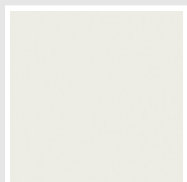
Colors and Finishes

STANDARD

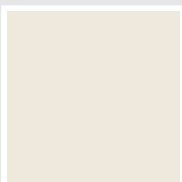


Bianco Standard
Cod. 01

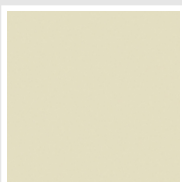
CLASSIC



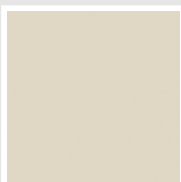
Bianco Edelweiss
Opaco
Cod. 34



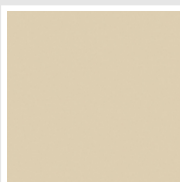
Bianco Whisper
Peach
Cod. 36



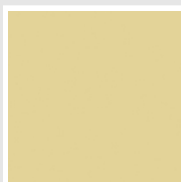
Avorio - RAL 1013
Cod. 02



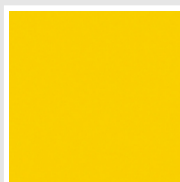
Jasmin Opaco
Cod. 35



Beige Naturale
Cod. 38



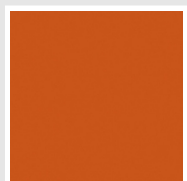
Beige Cream
Cod. 26



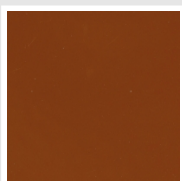
Giallo - RAL 1021
Cod. 04



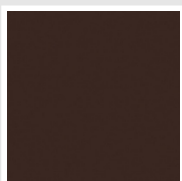
Giallo Melone - RAL
1028
Cod. E7



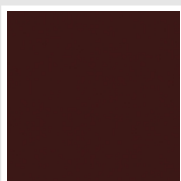
Arancio - RAL 2004
Cod. 17



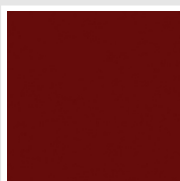
Marrone Ruggine -
RAL 8004
Cod. E1



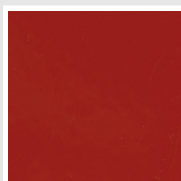
Marrone - RAL 8017
Cod. 09



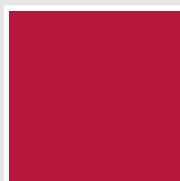
Vinaccia - RAL 3005
Cod. H9



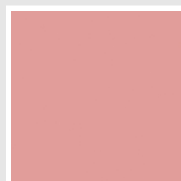
Amaranto - RAL 3003
Cod. 06



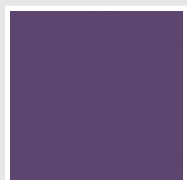
Rosso - RAL 3000
Cod. 05



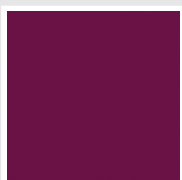
Rosso Fragola - RAL
3018
Cod. Y3



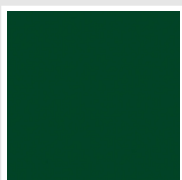
Rosa - RAL 3015
Cod. R2



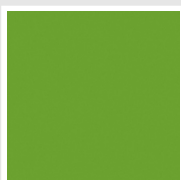
Lilla Bluastro - RAL
4005
Cod. R3



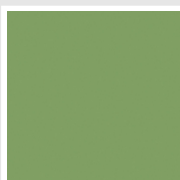
Porpora Traffico -
RAL 4006
Cod. R6



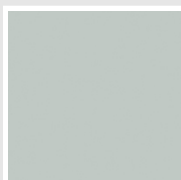
Verde Bosco - RAL
6005
Cod. 19



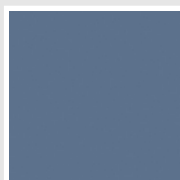
Verde Erba - RAL
6018
Cod. N3



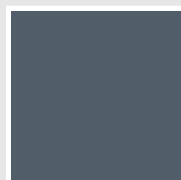
Verde Salvia - RAL
6021
Cod. E6



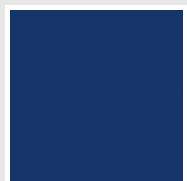
Verde Greenwich
Cod. 28



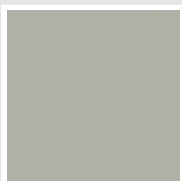
Blu Pastello - RAL
5024
Cod. G7



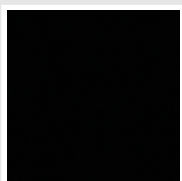
Blu Colomba - RAL
5014
Cod. G9



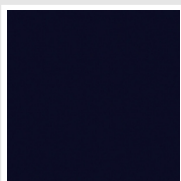
Blu Hewi
Cod. 11



Grigio Manhattan
Cod. 03

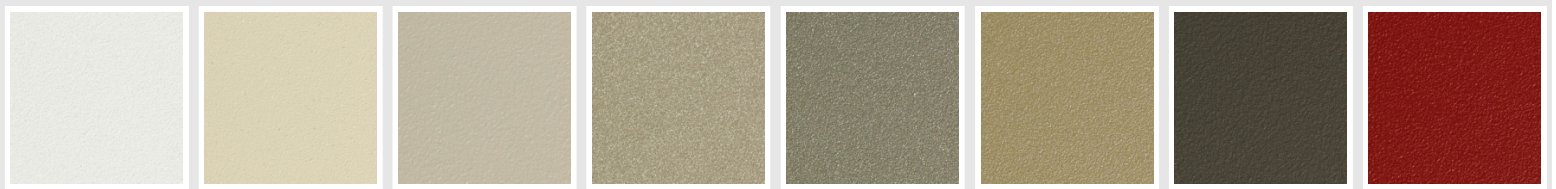


Nero - RAL 9005
Cod. 10



Deep Blue
Cod. 2F

SPECIAL



Bianco Perla
Cod. 16

Quartz 1
Cod. 1C

Sablé
Cod. Y4

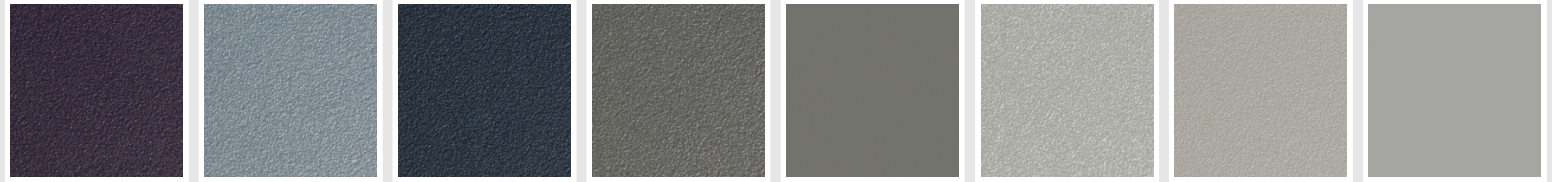
Quartz 2
Cod. 2C

Sunstone
Cod. 2D

Petra
Cod. 3D

Bruno Tabacco
Cod. 1B

Flame Red
Cod. 7D



Purple Blue
Cod. 1D

Azurite
Cod. 6D

Azurite 3
Cod. 6C

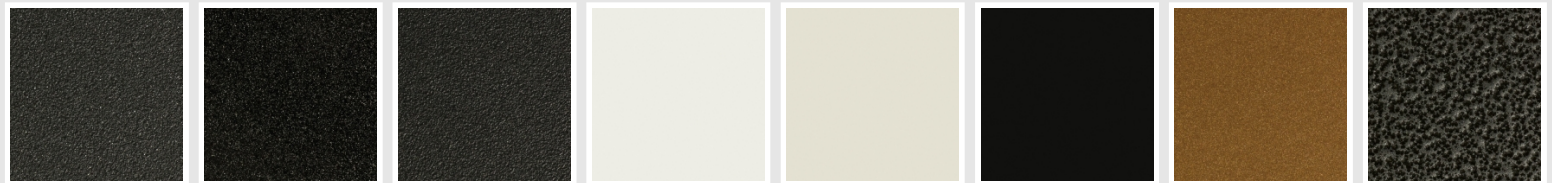
Grigio Medio
Cod. 4D

Grigio Titanio
Metallizzato - RAL
9023
Cod. L3

Grigio Silver
Cod. 5D

Grigio Perla
Cod. L6

Grigio Alluminio -
RAL 9006
Cod. B4



Nero Grafite
Cod. 18

Grigio Quarzo
Cod. 31

Nero Satinato
Cod. 30

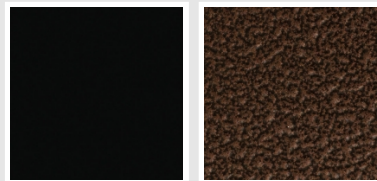
Luxury White
Cod. J7

Bianco Opaco
Cod. J8

Nero Opaco
Cod. K1

Bronzo
Cod. J9

Grigio Martellato
Cod. 32



Luxury Black
Cod. J3

Flame Martellato
Cod. J4

SURFACES



Trattamento Loft
Cod. TR

Taftah Argento
Cod. K4

Taftah Platino
Cod. K3

Taftah Oro
Cod. K2

Grey Shadow
Cod. X6

The Colors used in this folder are not considered binding. The different technological painting processes and the materials used for the realization can not have a perfect color match with the delivered product. Irsap company reserves the right to introduce at any time whatever modifications necessary to the improvement of the product.