

*STEP\_V is the range of “VERTICAL” products available in numerous sizes and heating powers. Nine models have been designed for the complete adaptability to every type of room and the satisfaction of every need. The extension of the range ensures ideal comfort in every situation.*



Step V, Height 2000 mm, Length 670 mm, Quartz 1

## Construction features

flattened pipes in aluminium, 70 mm height;  
maximum working pressure 4 bar;  
maximum working temperature 95°C.

## Standard equipment

wall fixing systems the same finish as the radiator  
2 hidden vent valves of 1/2" and valve caps  
pre-mounted hydraulic connection kit in the same finish as the radiator, equipped with copper fittings (diameter 12, 14 and 15 mm), and multilayer pipes (14 x 2 thick and 16 x 2 thick)

Plus



Technical data

Model	Deph (mm)	Height (mm)	Width (mm)	Conn. C. (mm)	Weigth (kg)	Capacity (lt)	COM_PRODUCTS_TABLE_DATA_BTU	Δt=50°C (kcal/h)	Δt=50°C (Watt)	Δt=40°C (Watt)	Δt=30°C (Watt)	Δt=20°C (Watt)	Exponent
STEP_V_0600_06 el.	107,0	600	670	376	11,58	1,66	1.416,6	357,0	415,2	315,6	221,4	134,4	1,232
STEP_V_0600_08 el.	107,0	600	910	376	15,62	2,22	1.888,8	476,0	553,6	420,8	295,2	179,2	1,232
STEP_V_0600_10 el.	107,0	600	1150	376	19,65	2,79	2.361,0	595,0	692,0	526,0	369,0	224,0	1,232
STEP_V_1800_04 el.	107,0	1800	430	1576	13,86	3,17	2.376,0	598,8	696,4	528,8	370,8	224,8	1,234
STEP_V_1800_06 el.	107,0	1800	670	1576	21,05	4,77	3.564,0	898,2	1.044,6	793,2	556,2	337,2	1,234
STEP_V_1800_08 el.	107,0	1800	910	1576	28,25	6,37	4.752,0	1.197,6	1.392,8	1.057,6	741,6	449,6	1,234
STEP_V_2000_04 el.	107,0	2000	430	1776	14,91	3,51	2.609,2	657,6	764,8	580,4	406,4	246,0	1,238
STEP_V_2000_06 el.	107,0	2000	670	1776	22,63	5,29	3.913,8	986,4	1.147,2	870,6	609,6	369,0	1,238
STEP_V_2000_08 el.	107,0	2000	910	1776	30,36	7,06	5.218,4	1.315,2	1.529,6	1.160,8	812,8	492,0	1,238

The heating yields are calculated on products with epoxy powder coatings. For Chrome (code 50) and Black Chrome (code 2E) finishes, the yields decrease respectively by 40% and 22%. All the available finishes are shown on the facing page.

Standard equipment

- wall fixing systems the same finish as the radiator
- 2 hidden vent valves of 1/2” and valve caps
- pre-mounted hydraulic connection kit in the same finish as the radiator, equipped with copper fittings (diameter 12, 14 and 15 mm), and multilayer pipes (14 x 2 thick and 16 x 2 thick)

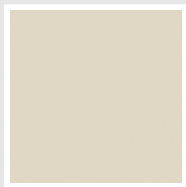
Packing

The attention that Irsap lavishes on each radiator is also evident in the care given to packaging. Every radiator is protected with packaging caps in shock-resistant material; this extra protection prevents damage and scratching during both shipping and handling onsite. In regard to STEP products, reinforcement has been inserted all around the packaging’s perimeter to ensure adequate protection during transport.

All the packaging must be disposed in conformity with the regulations in force, acknowledged by the respective bodies.

Colors and Finishes

CLASSIC

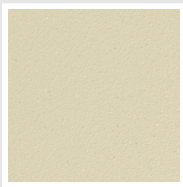


Jasmin Opaco  
Cod. 35

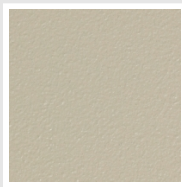
SPECIAL



Bianco Perla  
Cod. 16



Quartz 1  
Cod. 1C



Sablé  
Cod. Y4



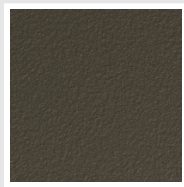
Quartz 2  
Cod. 2C



Sunstone  
Cod. 2D



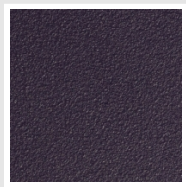
Petra  
Cod. 3D



Bruno Tabacco  
Cod. 1B



Flame Red  
Cod. 7D



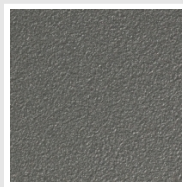
Purple Blue  
Cod. 1D



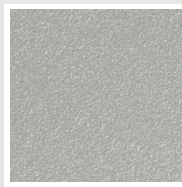
Azurite  
Cod. 6D



Azurite 3  
Cod. 6C



Grigio Medio  
Cod. 4D



Grigio Silver  
Cod. 5D



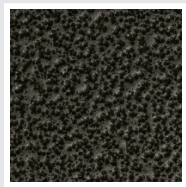
Grigio Perla  
Cod. L6



Nero Grafite  
Cod. 18



Nero Satinato  
Cod. 30

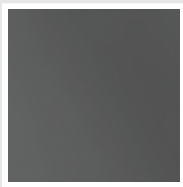


Grigio Martellato  
Cod. 32

SURFACES



Cromato  
Cod. 50



Nero Cromato  
Cod. 2E

The Colors used in this folder are not considered binding. The different technological painting processes and the materials used for the realization can not have a perfect color match with the delivered product. Irsap company reserves the right to introduce at any time whatever modifications necessary to the improvement of the product.