

Each and every STEP detail has been designed for perfection. All these components are the result of a latest-generation solid modeling program. The process permits the generation of unmistakably exclusive soft, wavy lines with a unique gleam and reflection.



Step B, Vertical, 11 elements, Height 1240 mm, Length 500 mm, Chrome-plated,

Construction features

flattened pipes in aluminium, 40 mm height;
maximum working pressure 4 bar;
maximum working temperature 95°C.

Standard equipment

wall fixing systems the same finish as the radiator
2 hidden vent valves of 1/2" and valve caps
pre-mounted hydraulic connection kit in the same finish as the radiator, equipped with copper fittings (diameter 12, 14 and 15 mm), and multilayer pipes (14 x 2 thick and 16 x 2 thick)

Plus



Technical data

Model	Deph (mm)	Height (mm)	Width (mm)	Conn. C. (mm)	Weigth (kg)	Capacity (lt)	COM_PRODUCTS_TABLE_DATA_BTU	$\Delta t=50^{\circ}\text{C}$ (kcal/h)	$\Delta t=50^{\circ}\text{C}$ (Watt)	$\Delta t=40^{\circ}\text{C}$ (Watt)	$\Delta t=30^{\circ}\text{C}$ (Watt)	$\Delta t=20^{\circ}\text{C}$ (Watt)	Exponent
STEP_B_760_7 el.	107,0	760	500	276	10,20	1,60	1.105,3	278,6	324,1	248,5	177,1	109,2	1,184
STEP_B_760_7 el.	107,0	760	600	376	10,80	1,90	1.245,3	313,6	364,7	280,7	200,2	123,9	1,177
STEP_B_1240_11 el.	107,0	1240	500	276	16,30	2,60	1.736,9	437,8	509,3	389,4	275,0	169,4	1,203
STEP_B_1240_11 el.	107,0	1240	600	376	17,30	3,10	1.964,6	495,0	576,4	442,2	313,5	193,6	1,190
STEP_B_1720_15 el.	107,0	1720	500	276	22,50	3,50	2.388,0	601,5	700,5	534,0	376,5	229,5	1,216
STEP_B_1720_15 el.	107,0	1720	600	376	23,90	4,20	2.685,0	676,5	787,5	601,5	426,0	261,0	1,203

The heating yields are calculated on products with epoxy powder coatings. For Chrome (code 50) and Black Chrome (code 2E) finishes, the yields decrease respectively by 40% and 22%. All the available finishes are shown on the facing page.

Standard equipment

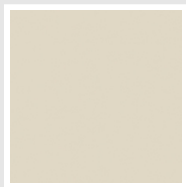
- wall fixing systems the same finish as the radiator
- 2 hidden vent valves of 1/2" and valve caps
- pre-mounted hydraulic connection kit in the same finish as the radiator, equipped with copper fittings (diameter 12, 14 and 15 mm), and multilayer pipes (14 x 2 thick and 16 x 2 thick)

Packing

The attention that Irsap lavishes on each radiator is also evident in the care given to packaging. Every radiator is protected with packaging caps in shock-resistant material; this extra protection prevents damage and scratching during both shipping and handling onsite. In regard to STEP products, reinforcement has been inserted all around the packaging's perimeter to ensure adequate protection during transport. All the packaging must be disposed in conformity with the regulations in force, acknowledged by the respective bodies.

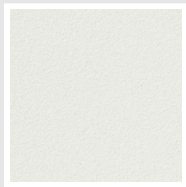
Colors and Finishes

CLASSIC



Jasmin Opaco
Cod. 35

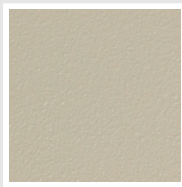
SPECIAL



Bianco Perla
Cod. 16



Quartz 1
Cod. 1C



Sablé
Cod. Y4



Quartz 2
Cod. 2C



Sunstone
Cod. 2D



Petra
Cod. 3D



Bruno Tabacco
Cod. 1B



Flame Red
Cod. 7D



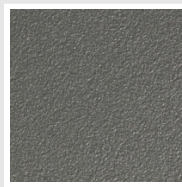
Purple Blue
Cod. 1D



Azurite
Cod. 6D



Azurite 3
Cod. 6C



Grigio Medio
Cod. 4D



Grigio Silver
Cod. 5D



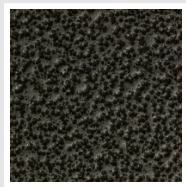
Grigio Perla
Cod. L6



Nero Grafite
Cod. 18



Nero Satinato
Cod. 30

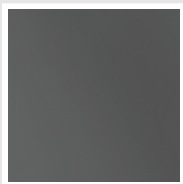


Grigio Martellato
Cod. 32

SURFACES



Cromato
Cod. 50



Nero Cromato
Cod. 2E

The Colors used in this folder are not considered binding. The different technological painting processes and the materials used for the realization can not have a perfect color match with the delivered product. Irsap company reserves the right to introduce at any time whatever modifications necessary to the improvement of the product.