

*A sober profile, decided lines and great dimensional modularity are the characteristics that make Sax a unique and contemporary product. The range includes both vertical and horizontal models and versions with a single or double row. The latter is ideal for environments that require a high heating performance.*



Sax Elettrico, Hight 1800 mm, Lenght 395 mm, Electric with wireless electronic control, Standard White

## Construction features

manifolds with a 30 mm diameter circular section  
tubes made of sheet steel with a 20x25 mm rectangular section  
complete with thermal liquid  
electric heater, Class 2 (double insulation), provided with wireless  
electroniccontrol

In addition to setting the desired temperature and keeping it under  
control,the wireless control performs the following functions: comfort  
function,reduced nighttime use, anti-freeze, and programmed  
stopping

single phase power supply 220 - 230 V, 50 Hz, Class II, IP 44  
long electricity cable: 1.200 mm (lower right side cable outlet),  
schuko plug

## Standard equipment

fixing brackets complete with screws and anchors  
Wireless remote control

## Certifications



## Plus



## Technical data

Model	Depth (mm)	Height (mm)	Width (mm)	Weight (kg)	Electric Power (Watt)
Sax electric 500 Watt	80,0	900	315	17,60	500
Sax electric 750 Watt	80,0	900	395	21,80	750
Sax electric with led 500 Watt	80,0	900	315	17,60	500
Sax electric with led 750 Watt	80,0	900	395	21,80	750
Sax electric 1000 Watt	80,0	1800	395	38,50	1000
Sax electric 1500 Watt	80,0	1800	435	42,70	1500
Sax electric 1800 Watt	80,0	1800	475	46,80	1800
Sax electric with led 1000 Watt	80,0	1800	395	38,50	1000
Sax electric with led 1500 Watt	80,0	1800	435	42,70	1500
Sax electric with led 1800 Watt	80,0	1800	475	46,80	1800

### Standard equipment

- fixing brackets complete with screws and anchors
- Wireless remote control

### Packing

The attention that Irsap lavishes on each radiator is also evident in the care given to packaging. Every radiator is protected with packaging caps in shockresistant material; this extra protection prevents damage and scratching during both shipping and handling onsite. All the packaging must be disposed in conformity with the regulations in force, acknowledged by the respective bodies.

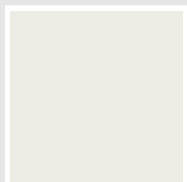
# Colors and Finishes

## STANDARD

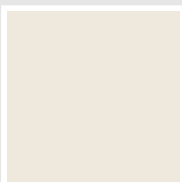


Bianco Standard  
Cod. 01

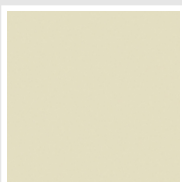
## CLASSIC



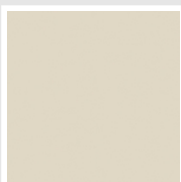
Bianco Edelweiss  
Opaco  
Cod. 34



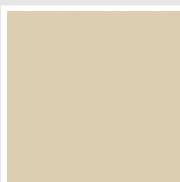
Bianco Whisper  
Peach  
Cod. 36



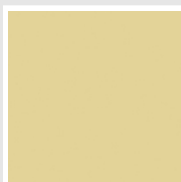
Avorio - RAL 1013  
Cod. 02



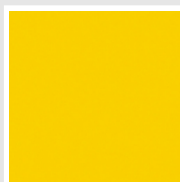
Jasmin Opaco  
Cod. 35



Beige Naturale  
Cod. 38



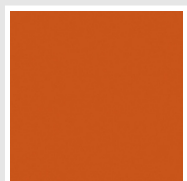
Beige Cream  
Cod. 26



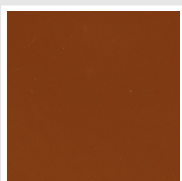
Giallo - RAL 1021  
Cod. 04



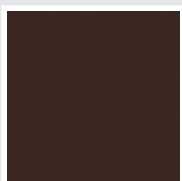
Giallo Melone - RAL  
1028  
Cod. E7



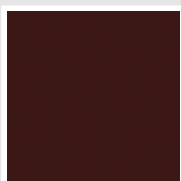
Arancio - RAL 2004  
Cod. 17



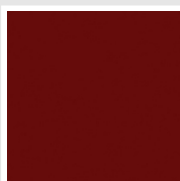
Marrone Ruggine -  
RAL 8004  
Cod. E1



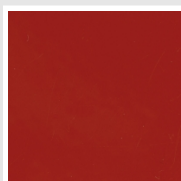
Marrone - RAL 8017  
Cod. 09



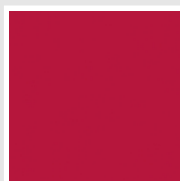
Vinaccia - RAL 3005  
Cod. H9



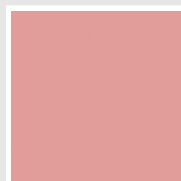
Amaranto - RAL 3003  
Cod. 06



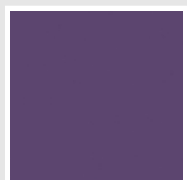
Rosso - RAL 3000  
Cod. 05



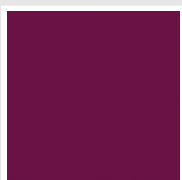
Rosso Fragola - RAL  
3018  
Cod. Y3



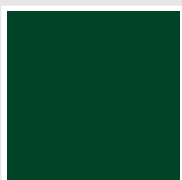
Rosa - RAL 3015  
Cod. R2



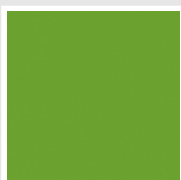
Lilla Bluastro - RAL  
4005  
Cod. R3



Porpora Traffico -  
RAL 4006  
Cod. R6



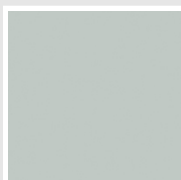
Verde Bosco - RAL  
6005  
Cod. 19



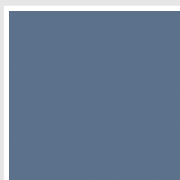
Verde Erba - RAL  
6018  
Cod. N3



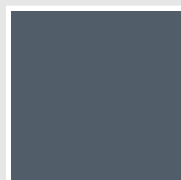
Verde Salvia - RAL  
6021  
Cod. E6



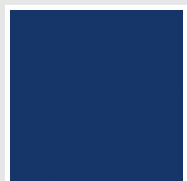
Verde Greenwich  
Cod. 28



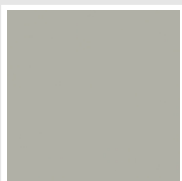
Blu Pastello - RAL  
5024  
Cod. G7



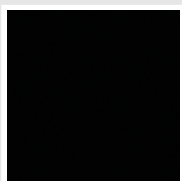
Blu Colomba - RAL  
5014  
Cod. G9



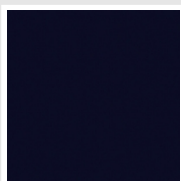
Blu Hewi  
Cod. 11



Grigio Manhattan  
Cod. 03

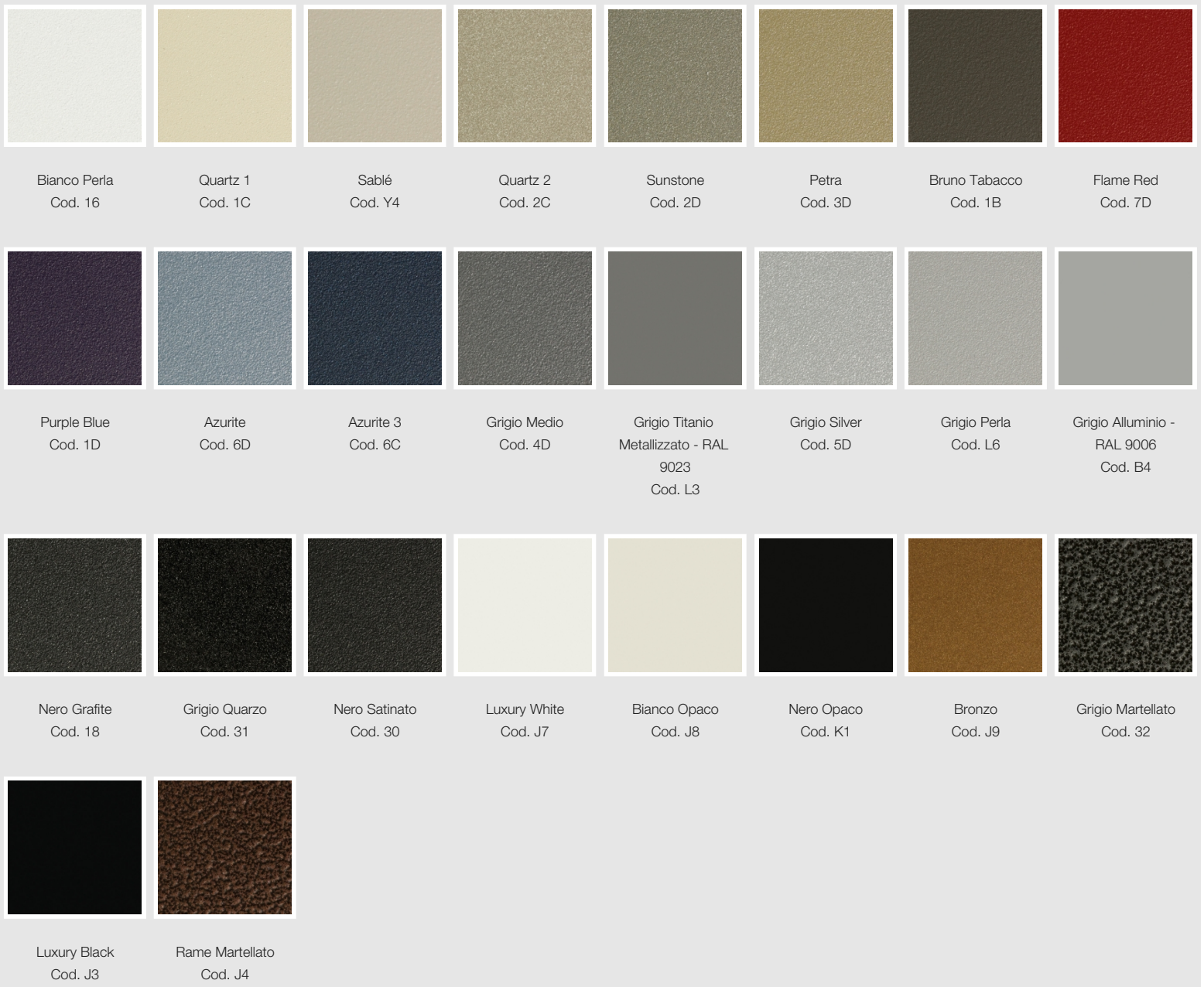


Nero - RAL 9005  
Cod. 10



Deep Blue  
Cod. 2F

## SPECIAL



## SURFACES



The Colors used in this folder are not considered binding. The different technological painting processes and the materials used for the realization can not have a perfect color match with the delivered product. Irsap company reserves the right to introduce at any time whatever modifications necessary to the improvement of the product.