

*Strict, rigid lines are almost the raison d'être of a function that goes beyond ... Emphatically square and modulated by a unit of measure that becomes proportion. The wall fixing brackets thrust forward to house the element before dissolving between it and water. Available in different colors for installation anywhere: in the bedroom, the bathroom, the living room. Present to meet the needs for containment but surrounded by the right heat at the same time almost as if to emphasize its primal function.*



Quadraqua, Hight 1828 mm, Lenght 300 mm, Pearl White

## Construction features

radiating panel  
1/2" Gas right threading  
maximum working pressure 4 bar  
maximum working temperature 95°C

## Standard equipment

angle pattern valve and lockshield valve assembly complete with copper  
fitting (12 and 14 mm diameter) multilayer (14 thick 2 and 16 thick 2)  
kit of pipe covers (suitable for pipes up to 16 mm thick)  
wall fixing system  
air vent

## Certifications



## Plus



## Technical data

Model	Depth (mm)	Height (mm)	Width (mm)	Conn. C. (mm)	Weight (kg)	Capacity (lt)	COM_PRODUCTS_TABLE_DATA_BTU	$\Delta t=50^{\circ}\text{C}$ (kcal/h)	$\Delta t=50^{\circ}\text{C}$ (Watt)	$\Delta t=40^{\circ}\text{C}$ (Watt)	$\Delta t=30^{\circ}\text{C}$ (Watt)	$\Delta t=20^{\circ}\text{C}$ (Watt)	Exponent
Quadraqua S	300,0	1116	300	224	29,00	2,30	1.423,0	359,0	417,0	317,0	223,0	136,0	1,222
Quadraqua L	300,0	1828	300	224	44,30	3,50	2.238,0	564,0	656,0	497,0	348,0	211,0	1,240

Thanks to the high performance of Irsap Quadraqua radiators, the ideal  $\Delta t$  for low temperature projects is  $\Delta t$  at  $30^{\circ}\text{C}$ .

For  $\Delta t$  different from  $50^{\circ}\text{C}$  use the formula  $Q=Q_n (\Delta t / 50)^n$

### Standard equipment

- angle pattern valve and lockshield valve assembly complete with copper fitting (12 and 14 mm diameter) multilayer (14 thick 2 and 16 thick 2)
- kit of pipe covers (suitable for pipes up to 16 mm thick)
- wall fixing system
- air vent

### Packing

The attention that Irsap lavishes on each radiator is also evident in the care given to packaging. Every radiator is protected with packaging caps in shockresistant material; this extra protection prevents damage and scratching during both shipping and handling onsite. All the packaging must be disposed in conformity with the regulations in force, acknowledged by the respective bodies.

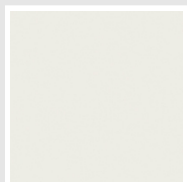
# Colors and Finishes

## STANDARD

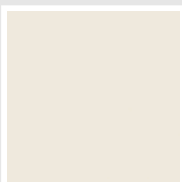


Bianco Standard  
Cod. 01

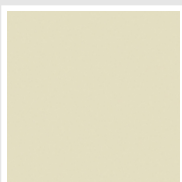
## CLASSIC



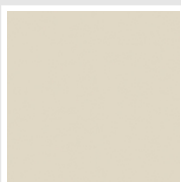
Bianco Edelweiss  
Opaco  
Cod. 34



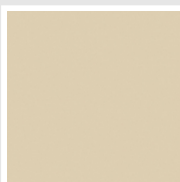
Bianco Whisper  
Peach  
Cod. 36



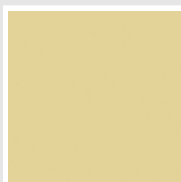
Avorio - RAL 1013  
Cod. 02



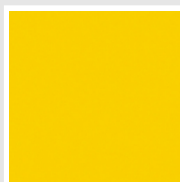
Jasmin Opaco  
Cod. 35



Beige Naturale  
Cod. 38



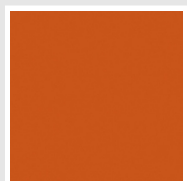
Beige Cream  
Cod. 26



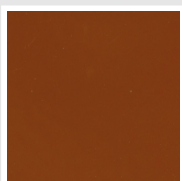
Giallo - RAL 1021  
Cod. 04



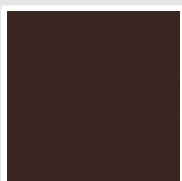
Giallo Melone - RAL  
1028  
Cod. E7



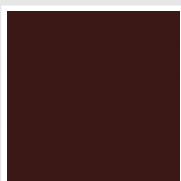
Arancio - RAL 2004  
Cod. 17



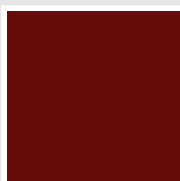
Marrone Ruggine -  
RAL 8004  
Cod. E1



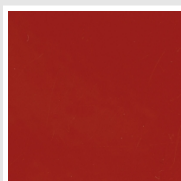
Marrone - RAL 8017  
Cod. 09



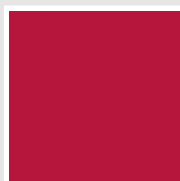
Vinaccia - RAL 3005  
Cod. H9



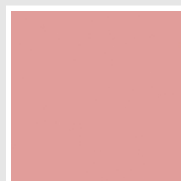
Amaranto - RAL 3003  
Cod. 06



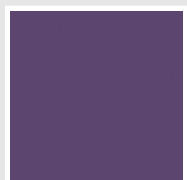
Rosso - RAL 3000  
Cod. 05



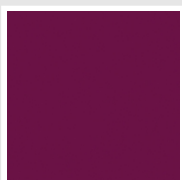
Rosso Fragola - RAL  
3018  
Cod. Y3



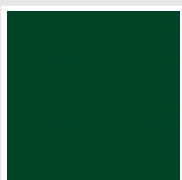
Rosa - RAL 3015  
Cod. R2



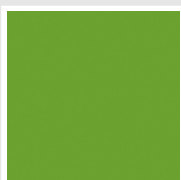
Lilla Bluastro - RAL  
4005  
Cod. R3



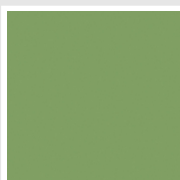
Porpora Traffico -  
RAL 4006  
Cod. R6



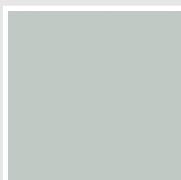
Verde Bosco - RAL  
6005  
Cod. 19



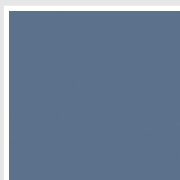
Verde Erba - RAL  
6018  
Cod. N3



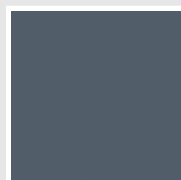
Verde Salvia - RAL  
6021  
Cod. E6



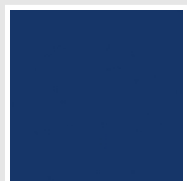
Verde Greenwich  
Cod. 28



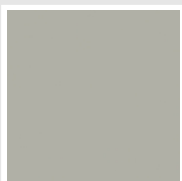
Blu Pastello - RAL  
5024  
Cod. G7



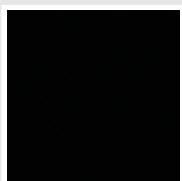
Blu Colomba - RAL  
5014  
Cod. G9



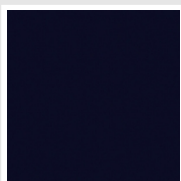
Blu Hewi  
Cod. 11



Grigio Manhattan  
Cod. 03

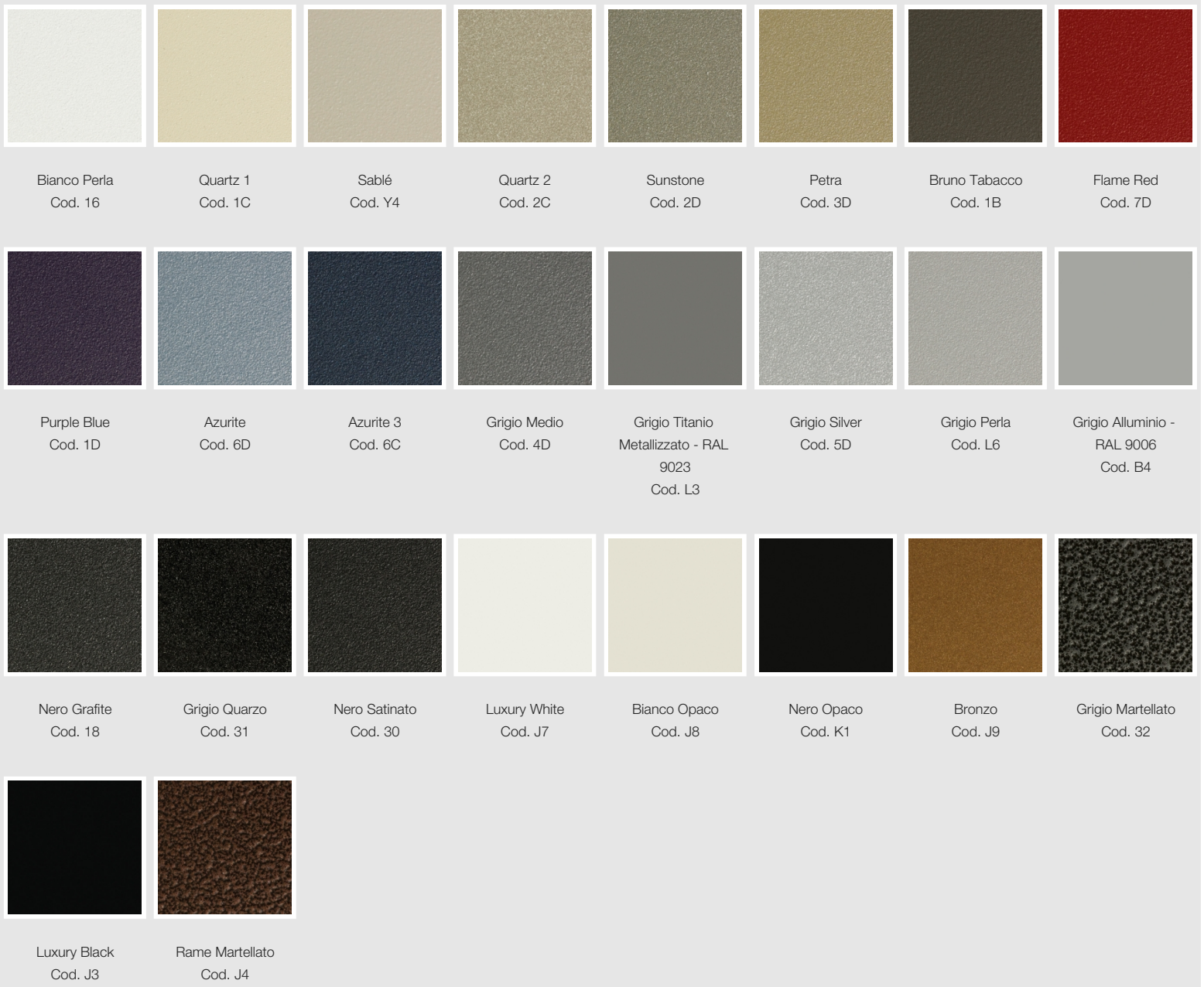


Nero - RAL 9005  
Cod. 10



Deep Blue  
Cod. 2F

## SPECIAL



## SURFACES



The Colors used in this folder are not considered binding. The different technological painting processes and the materials used for the realization can not have a perfect color match with the delivered product. Irsap company reserves the right to introduce at any time whatever modifications necessary to the improvement of the product.