

*The shape originates from the logic of usefulness and simplicity, rejecting the unnecessary. Utility reduces the shape to its essential, making it gorgeous and meaningful, profound expression of a quality and a rigorous design which, over the years, will hardly be perceived as obsolete.*



Mama, Hight 1400 mm, Lenght 550 mm, Opaque White,

## Construction features

- radiating panel
- 1/2" Gas right threading
- maximum working pressure 4 bar
- maximum working temperature 95°C

## Standard equipment

- water connection system installed on the product complete with fittings for connection to copper pipes (12 and 14 mm diameter) and multilayer pipes (14 x 2 thick and 16 x 2 thick)
- wall fixing system built into the product column
- air vent

## Certifications



## Plus



## Technical data

Model	Depth (mm)	Height (mm)	Width (mm)	Conn. C. (mm)	Weight (kg)	Capacity (lt)	COM_PRODUCTS_TABLE_DATA_BTU	$\Delta t=50^{\circ}\text{C}$ (kcal/h)	$\Delta t=50^{\circ}\text{C}$ (Watt)	$\Delta t=40^{\circ}\text{C}$ (Watt)	$\Delta t=30^{\circ}\text{C}$ (Watt)	$\Delta t=20^{\circ}\text{C}$ (Watt)	Exponent
1050 x 550	113,5	1050	550	350	13,70	1,40	2.132,0	538,0	625,0	477,0	337,0	206,0	1,210
1400 x 550	113,5	1400	550	350	17,50	1,70	2.866,0	722,0	840,0	638,0	448,0	272,0	1,230
1700 x 550	113,5	1700	550	350	20,40	2,00	3.487,0	879,0	1.022,0	770,0	534,0	319,0	1,270

(\*) Thanks to the high performance of Irsap M'ama radiators, the ideal  $\Delta t$  for low temperature projects is  $\Delta t$  at  $30^{\circ}\text{C}$ .

For  $\Delta t$  different from  $50^{\circ}\text{C}$  use the formula:  $Q=Q_n (\Delta t / 50)^n$

### Standard equipment

- water connection system installed on the product complete with fittings for connection to copper pipes (12 and 14 mm diameter) and multilayer pipes (14 x 2 thick and 16 x 2 thick)
- wall fixing system built into the product column
- air vent

### Packing

The attention that Irsap lavishes on each radiator is also evident in the care given to packaging. Every radiator is protected with packaging caps in shock-resistant material; this extra protection prevents damage and scratching during both shipping and handling onsite. All the packaging must be disposed in conformity with the regulations in force, acknowledged by the respective bodies.

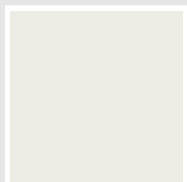
# Colors and Finishes

## STANDARD

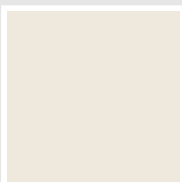


Bianco Standard  
Cod. 01

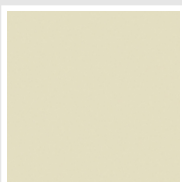
## CLASSIC



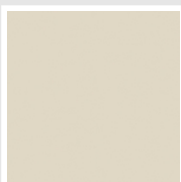
Bianco Edelweiss  
Opaco  
Cod. 34



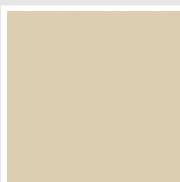
Bianco Whisper  
Peach  
Cod. 36



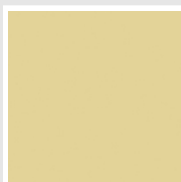
Avorio - RAL 1013  
Cod. 02



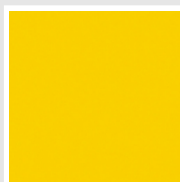
Jasmin Opaco  
Cod. 35



Beige Naturale  
Cod. 38



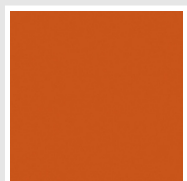
Beige Cream  
Cod. 26



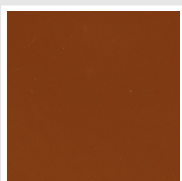
Giallo - RAL 1021  
Cod. 04



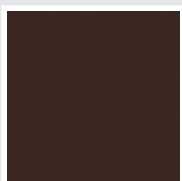
Giallo Melone - RAL  
1028  
Cod. E7



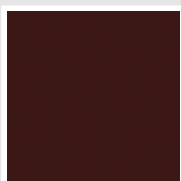
Arancio - RAL 2004  
Cod. 17



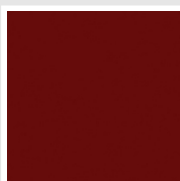
Marrone Ruggine -  
RAL 8004  
Cod. E1



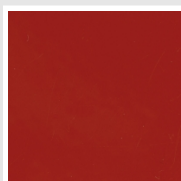
Marrone - RAL 8017  
Cod. 09



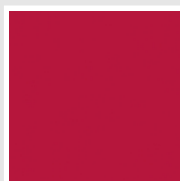
Vinaccia - RAL 3005  
Cod. H9



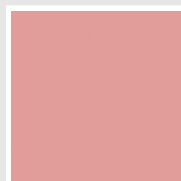
Amaranto - RAL 3003  
Cod. 06



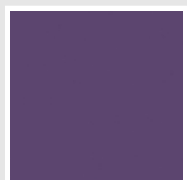
Rosso - RAL 3000  
Cod. 05



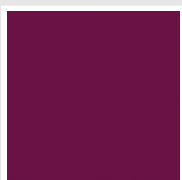
Rosso Fragola - RAL  
3018  
Cod. Y3



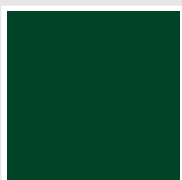
Rosa - RAL 3015  
Cod. R2



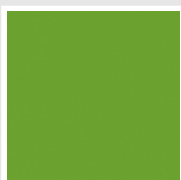
Lilla Bluastro - RAL  
4005  
Cod. R3



Porpora Traffico -  
RAL 4006  
Cod. R6



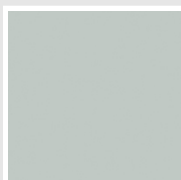
Verde Bosco - RAL  
6005  
Cod. 19



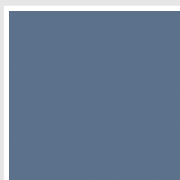
Verde Erba - RAL  
6018  
Cod. N3



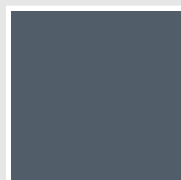
Verde Salvia - RAL  
6021  
Cod. E6



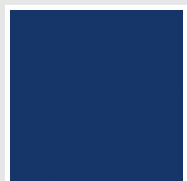
Verde Greenwich  
Cod. 28



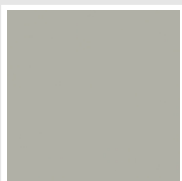
Blu Pastello - RAL  
5024  
Cod. G7



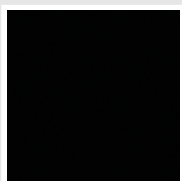
Blu Colomba - RAL  
5014  
Cod. G9



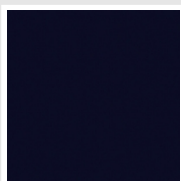
Blu Hewi  
Cod. 11



Grigio Manhattan  
Cod. 03



Nero - RAL 9005  
Cod. 10



Deep Blue  
Cod. 2F

## SPECIAL



The Colors used in this folder are not considered binding. The different technological painting processes and the materials used for the realization can not have a perfect color match with the delivered product. Irsap company reserves the right to introduce at any time whatever modifications necessary to the improvement of the product.