

Immagina. The purity of the line is not an end in itself but rather dictated by the shape that becomes body, light, and color before changing into heat. The radiating body is a sculpture on the wall; the infinite solutions are accomplices. Integration into the field of vision is achieved by blending in with the finish. Interpretation in colour and light is a child's play. The stillness of the shape morphs into a never-ending end.



Immagina, Hight 1800 mm, Lenght 500 mm, Wall Finished

Construction features

- radiating panel
- 1/2" Gas right threading
- maximum working pressure 4 bar
- maximum working temperature 95°C

Standard equipment

- angle pattern valve and lockshield valve assembly complete with copper fitting (12 and 14 mm diameter) multilayer (14 thick 2 and 16 thick 2)
- kit of pipe covers (suitable for pipes up to 16 mm thick)
- wall fixing system
- LED lighting system optional
- air vent

Certifications



Plus



Technical data

Model	Depth (mm)	Height (mm)	Width (mm)	Conn. C. (mm)	Weight (kg)	Capacity (lt)	COM_PRODUCTS_TABLE_DATA_BTU	$\Delta t=50^{\circ}\text{C}$ (kcal/h)	$\Delta t=50^{\circ}\text{C}$ (Watt)	$\Delta t=40^{\circ}\text{C}$ (Watt)	$\Delta t=30^{\circ}\text{C}$ (Watt)	$\Delta t=20^{\circ}\text{C}$ (Watt)	Exponent
Immagina S	70,0	1800	500	50	26,30	1,40	2.624,0	661,0	769,0	584,0	410,0	248,0	1,234
Immagina S with led	70,0	1800	500	50	26,30	1,40	2.624,0	661,0	769,0	584,0	410,0	248,0	1,234
Immagina L	70,0	2000	600	50	33,30	1,90	3.443,0	868,0	1.009,0	768,0	540,0	329,0	1,224
Immagina L with led	70,0	2000	600	50	33,30	1,90	3.443,0	868,0	1.009,0	768,0	540,0	329,0	1,224

Thanks to the high performance of Irsap Immagina radiators, the ideal Δt for low temperature projects is Δt at 30°C .

For Δt different from 50°C use the formula $Q=Q_n (\Delta t / 50)^n$

Standard equipment

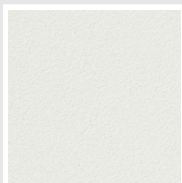
- angle pattern valve and lockshield valve assembly complete with copper fitting (12 and 14 mm diameter) multilayer (14 thick 2 and 16 thick 2)
- kit of pipe covers (suitable for pipes up to 16 mm thick)
- wall fixing system
- LED lighting system optional
- air vent

Packing

The attention that Irsap lavishes on each radiator is also evident in the care given to packaging. Every radiator is protected with packaging caps in shockresistant material; this extra protection prevents damage and scratching during both shipping and handling onsite. All the packaging must be disposed in conformity with the regulations in force, acknowledged by the respective bodies.

Colors and Finishes

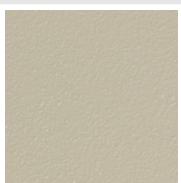
SPECIAL



Bianco Perla
Cod. 16



Quartz 1
Cod. 1C



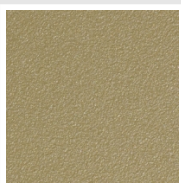
Sablé
Cod. Y4



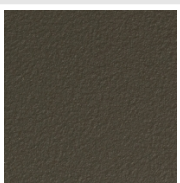
Quartz 2
Cod. 2C



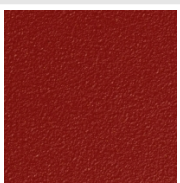
Sunstone
Cod. 2D



Petra
Cod. 3D



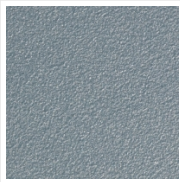
Bruno Tabacco
Cod. 1B



Flame Red
Cod. 7D



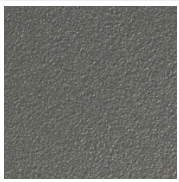
Purple Blue
Cod. 1D



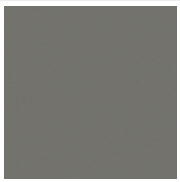
Azurite
Cod. 6D



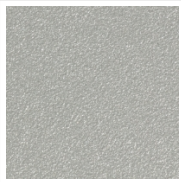
Azurite 3
Cod. 6C



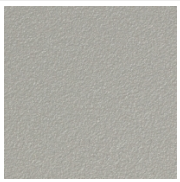
Grigio Medio
Cod. 4D



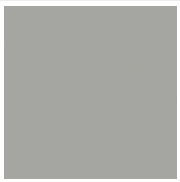
Grigio Titanio
Metallizzato - RAL
9023
Cod. L3



Grigio Silver
Cod. 5D



Grigio Perla
Cod. L6



Grigio Alluminio -
RAL 9006
Cod. B4



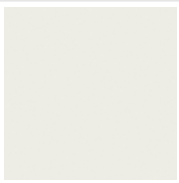
Nero Grafite
Cod. 18



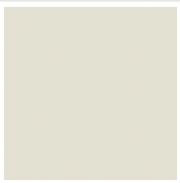
Grigio Quarzo
Cod. 31



Nero Satinato
Cod. 30



Luxury White
Cod. J7



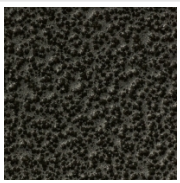
Bianco Opaco
Cod. J8



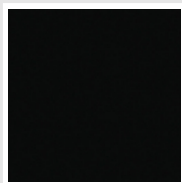
Nero Opaco
Cod. K1



Bronzo
Cod. J9



Grigio Martellato
Cod. 32

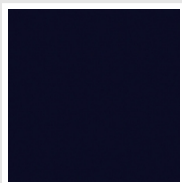


Luxury Black
Cod. J3



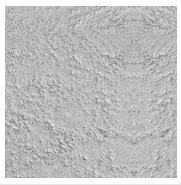
Rame Martellato
Cod. J4

CLASSIC



Deep Blue
Cod. 2F

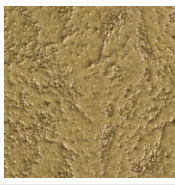
SURFACES



Taftah Argento
Cod. K4



Taftah Platino
Cod. K3



Taftah Oro
Cod. K2



Grey Shadow
Cod. X6

The Colors used in this folder are not considered binding. The different technological painting processes and the materials used for the realization can not have a perfect color match with the delivered product. Irsap company reserves the right to introduce at any time whatever modifications necessary to the improvement of the product.