

FACE ZERO, il primo radiatore raso muro di Irsap. Un prodotto dallo spiccato valore estetico che garantisce complanarità con le pareti, integrandosi e fondendosi in ambienti di grande valenza architettonica. La gestione del comfort è garantita dall'integrazione dell'unità modulante NOW, presente di serie in tutte le versioni. Grazie all'ampia superficie radiante e alla forma della cornice che permette la perfetta diffusione dell'aria calda, i radiatori Face Zero sono ideali per il funzionamento di impianti a bassa temperatura. L'apertura a libro con chiusura a calamita, sicura e facile, garantisce una veloce e corretta pulizia e un pratico accesso a tutte le parti funzionali del corpo scaldante. Il radiatore può essere integrato direttamente ai "Sistemi Now" ed al controllo remoto tramite smartphone. Face Zero è disponibile nelle nuance di colore Irsap (Classic e Special) e nelle raffinate finiture esclusive in acciaio inox proposte dallo Studio Citterio.



Face Zero, Hight 1800 mm, Lenght 600 mm, Black Dots,

Construction features

- radiating panel
- 1/2" Gas right threading
- maximum working pressure 4 bar
- maximum working temperature 95°C
- radial fans with low fuel motors

Standard equipment

- 2 lockshield valves 1/2" M 1/2" F – FE connection
- flexible pipes for ease of installation
- wall fastening system
- 2 batteries
- modulating thermostatic head

Plus



Technical data

Model	Depth (mm)	Height (mm)	Width (mm)	Conn. C. (mm)	Weight (kg)	Capacity (lt)	COM_PRODUCTS_TABLE_DATA_BTU	Δt=50°C (kcal/h)	Δt=50°C (Watt)	Δt=40°C (Watt)	Δt=30°C (Watt)	Δt=20°C (Watt)	Exponent
FACE ZERO 1600 x 500	75,0	1597	500	50	30,40	1,20	1.842,0	464,0	540,0	409,0	287,0	173,0	1,240
FACE ZERO 1600 x 600	75,0	1597	598	50	36,10	1,60	2.457,0	619,0	720,0	547,0	384,0	233,0	1,240
FACE ZERO 1800 x 500	75,0	1797	500	50	34,40	1,40	2.354,0	593,0	690,0	523,0	366,0	222,0	1,230
FACE ZERO 1800 x 600	75,0	1797	598	50	40,90	1,80	3.071,0	774,0	900,0	684,0	480,0	292,0	1,230

(*) Thanks to the high performance of Irsap Face Zero radiators, the ideal Δt for low temperature projects is Δt at 30°C.

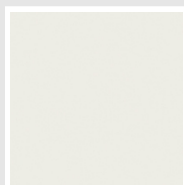
For Δt different from 50°C use the formula: $Q=Q_n (\Delta t / 50)^n$

Standard equipment

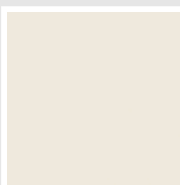
- 2 lockshield valves 1/2" M 1/2" F – FE connection
- flexible pipes for ease of installation
- wall fastening system
- 2 batteries
- modulating thermostatic head

Colors and Finishes

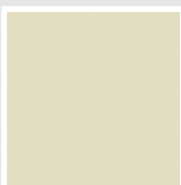
CLASSIC



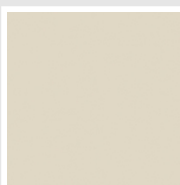
Bianco Edelweiss
Opaco
Cod. 34



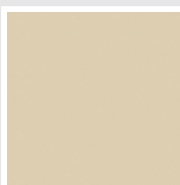
Bianco Whisper
Peach
Cod. 36



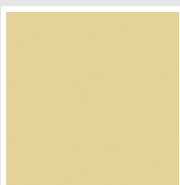
Avorio - RAL 1013
Cod. 02



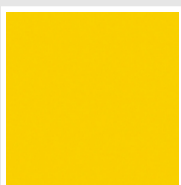
Jasmin Opaco
Cod. 35



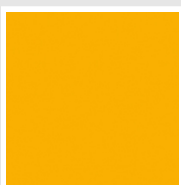
Beige Naturale
Cod. 38



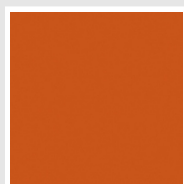
Beige Cream
Cod. 26



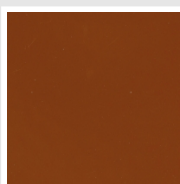
Giallo - RAL 1021
Cod. 04



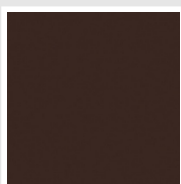
Giallo Melone - RAL
1028
Cod. E7



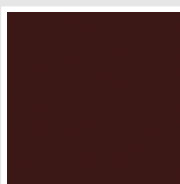
Arancio - RAL 2004
Cod. 17



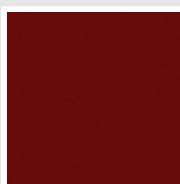
Marrone Ruggine -
RAL 8004
Cod. E1



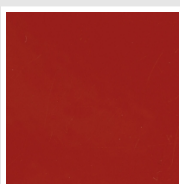
Marrone - RAL 8017
Cod. 09



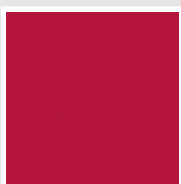
Vinaccia - RAL 3005
Cod. H9



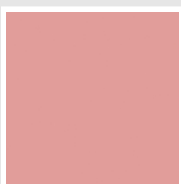
Amaranto - RAL 3003
Cod. 06



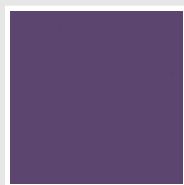
Rosso - RAL 3000
Cod. 05



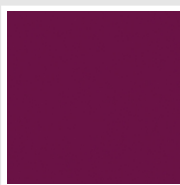
Rosso Fragola - RAL
3018
Cod. Y3



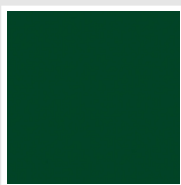
Rosa - RAL 3015
Cod. R2



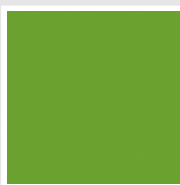
Lilla Bluastro - RAL
4005
Cod. R3



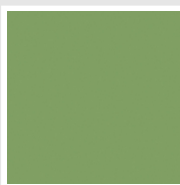
Porpora Traffico -
RAL 4006
Cod. R6



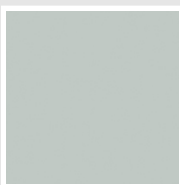
Verde Bosco - RAL
6005
Cod. 19



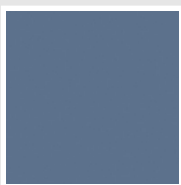
Verde Erba - RAL
6018
Cod. N3



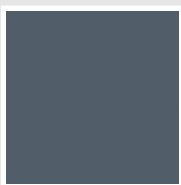
Verde Salvia - RAL
6021
Cod. E6



Verde Greenwich
Cod. 28



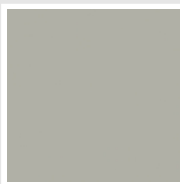
Blu Pastello - RAL
5024
Cod. G7



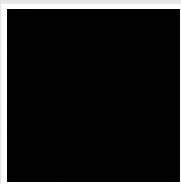
Blu Colomba - RAL
5014
Cod. G9



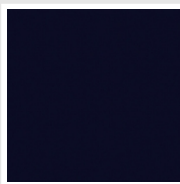
Blu Hewi
Cod. 11



Grigio Manhattan
Cod. 03

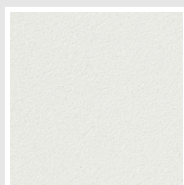


Nero - RAL 9005
Cod. 10

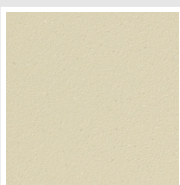


Deep Blue
Cod. 2F

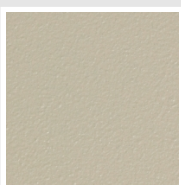
SPECIAL



Bianco Perla
Cod. 16



Quartz 1
Cod. 1C



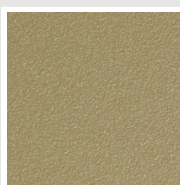
Sablé
Cod. Y4



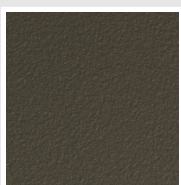
Quartz 2
Cod. 2C



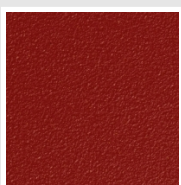
Sunstone
Cod. 2D



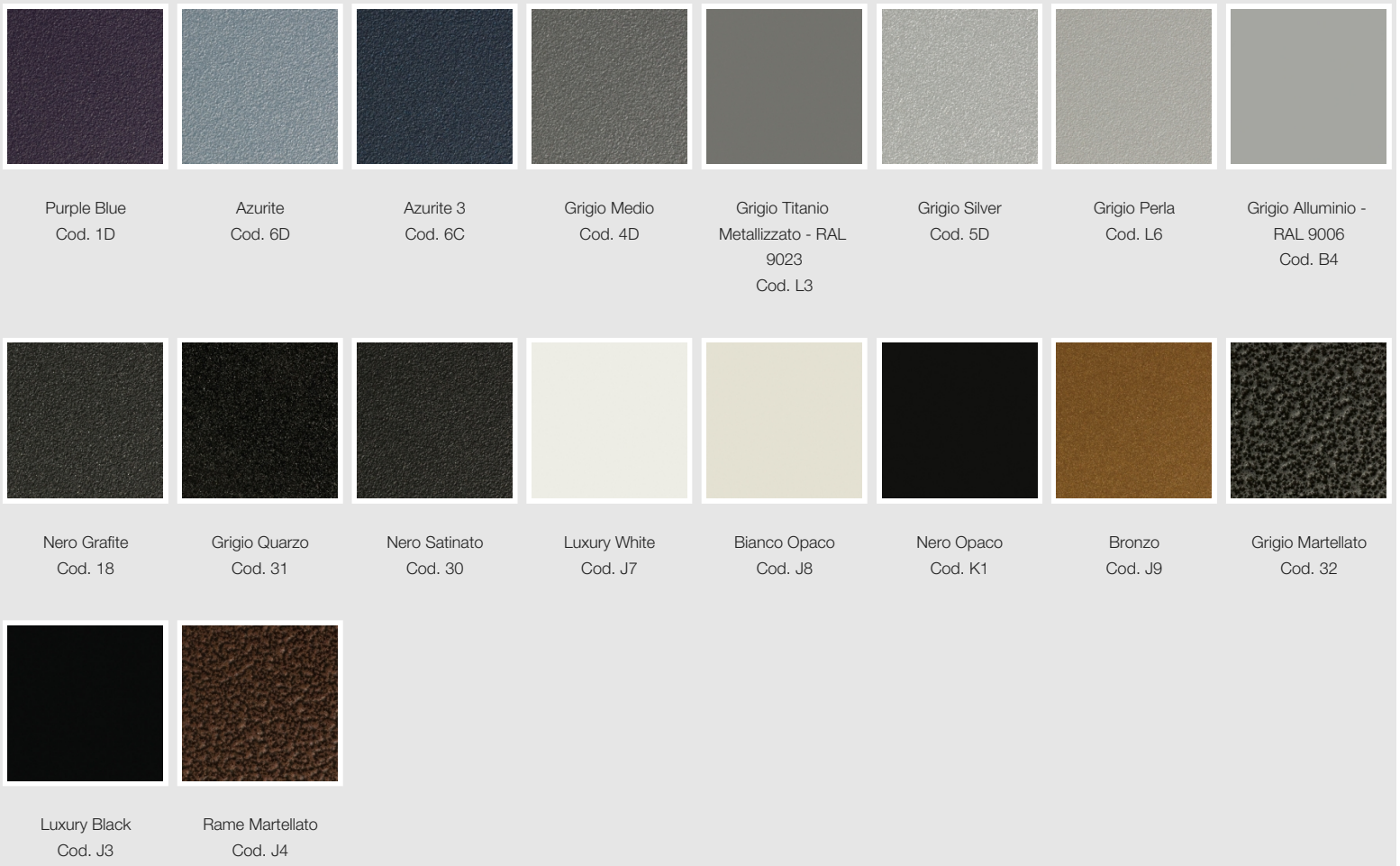
Petra
Cod. 3D



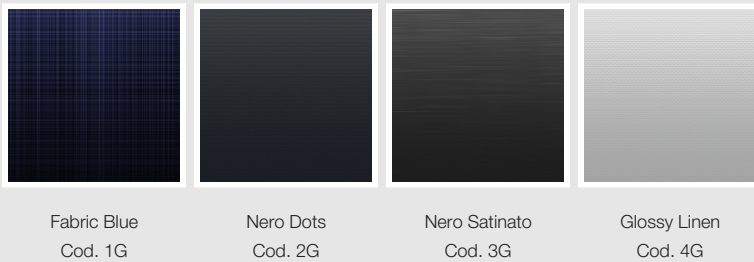
Bruno Tabacco
Cod. 1B



Flame Red
Cod. 7D



SURFACES



The Colors used in this folder are not considered binding. The different technological painting processes and the materials used for the realization can not have a perfect color match with the delivered product. Irsap company reserves the right to introduce at any time whatever modifications necessary to the improvement of the product.