

The play of solid and empty spaces and the play of light place DEDALO in a relationship with the walls; the hidden light source creates an mass of light and shadow that perceptively detaches the radiator from the wall to make it appear suspended while also facilitating the insertion of the towels: the object form is intrinsic to its function without conditioning it – the potential for use is enclosed in its formal abundance. The hydraulic element, or rather the valves do not come into view and is completely concealed, integrated into the one and only support against the wall. The plane decomposes in classic proportions and creates wings of growing size rendered precious by the slices of light the planes form inside. Light strikes the differently surfaces differently to alter perception.



Dedalo, Hight 1600 mm, Lenght 660 mm, Quartz 1

Construction features

radiating panel
1/2" Gas right threading
maximum working pressure 4 bar
maximum working temperature 95°C

Standard equipment

water connection system installed on the product complete with fittings
for connection to copper pipes (12, 14 and 15 mm diameter) and multilayer pipes (14 x 2 thick and 16 x 2 thick)
LED lighting system optional
wall fixing system
air vent

Certifications



Plus



Technical data

Model	Depth (mm)	Height (mm)	Width (mm)	Conn. C. (mm)	Weight (kg)	Capacity (lt)	COM_PRODUCTS_TABLE_DATA_BTU	$\Delta t=50^{\circ}\text{C}$ (kcal/h)	$\Delta t=50^{\circ}\text{C}$ (Watt)	$\Delta t=40^{\circ}\text{C}$ (Watt)	$\Delta t=30^{\circ}\text{C}$ (Watt)	$\Delta t=20^{\circ}\text{C}$ (Watt)	Exponent
Dedalo	90,0	900	498	50	18,00	0,70	846,0	213,0	248,0	182,0	122,0	70,0	1,386
Dedalo with led	90,0	900	498	50	18,00	0,70	846,0	213,0	248,0	182,0	122,0	70,0	1,386
Dedalo	90,0	1600	660	50	23,20	1,40	2.269,0	563,0	665,0	509,0	361,0	223,0	1,194
Dedalo with led	90,0	1600	660	50	23,20	1,40	2.269,0	563,0	665,0	509,0	361,0	223,0	1,194

Thanks to the high performance of Irsap Dedalo radiators, the ideal Δt for low temperature projects is Δt at 30°C .

For Δt different from 50°C use the formula $Q=Q_n (\Delta t / 50)^n$

Standard equipment

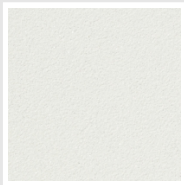
- water connection system installed on the product complete with fittings for connection to copper pipes (12, 14 and 15 mm diameter) and multilayer pipes (14 x 2 thick and 16 x 2 thick)
- LED lighting system optional
- wall fixing system
- air vent

Packing

The attention that Irsap lavishes on each radiator is also evident in the care given to packaging. Every radiator is protected with packaging caps in shockresistant material; this extra protection prevents damage and scratching during both shipping and handling onsite. All the packaging must be disposed in conformity with the regulations in force, acknowledged by the respective bodies.

Colors and Finishes

SPECIAL



Bianco Perla
Cod. 16



Quartz 1
Cod. 1C



Sablé
Cod. Y4



Quartz 2
Cod. 2C



Sunstone
Cod. 2D



Petra
Cod. 3D



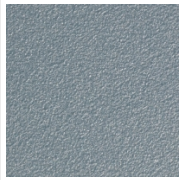
Bruno Tabacco
Cod. 1B



Flame Red
Cod. 7D



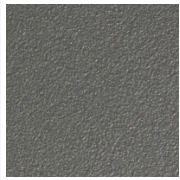
Purple Blue
Cod. 1D



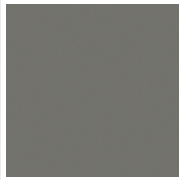
Azurite
Cod. 6D



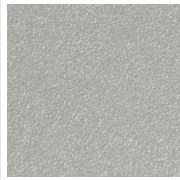
Azurite 3
Cod. 6C



Grigio Medio
Cod. 4D



Grigio Titanio
Metallizzato - RAL
9023
Cod. L3



Grigio Silver
Cod. 5D



Grigio Perla
Cod. L6



Grigio Alluminio -
RAL 9006
Cod. B4



Nero Grafite
Cod. 18



Grigio Quarzo
Cod. 31



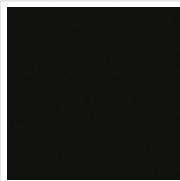
Nero Satinato
Cod. 30



Luxury White
Cod. J7



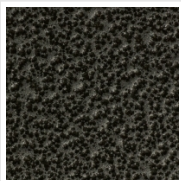
Bianco Opaco
Cod. J8



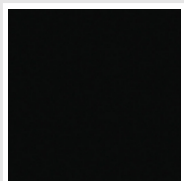
Nero Opaco
Cod. K1



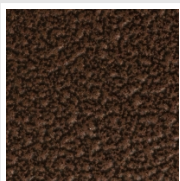
Bronzo
Cod. J9



Grigio Martellato
Cod. 32

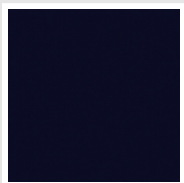


Luxury Black
Cod. J3



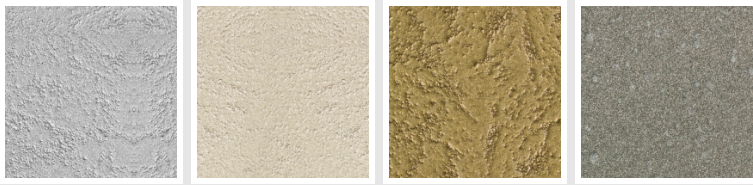
Rame Martellato
Cod. J4

CLASSIC



Deep Blue
Cod. 2F

SURFACES



Taftah Argento
Cod. K4

Taftah Platino
Cod. K3

Taftah Oro
Cod. K2

Grey Shadow
Cod. X6

The Colors used in this folder are not considered binding. The different technological painting processes and the materials used for the realization can not have a perfect color match with the delivered product. Irsap company reserves the right to introduce at any time whatever modifications necessary to the improvement of the product.