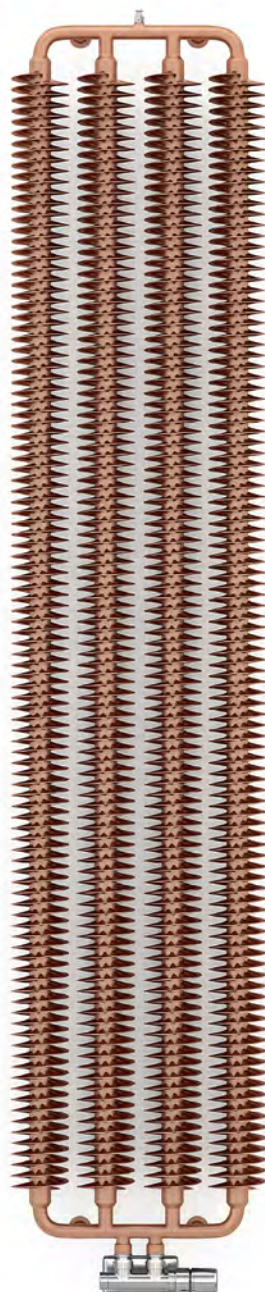


Ribbon V



colour included
in the price



Ribbon V 1920 \updownarrow × 390 \leftrightarrow ZX
colour: Copper

Angled integrated thermostatic valve set, left, chrome
Integrated pipe-masking set, chrome



TERMA
SINCE 1990



Ribbon V

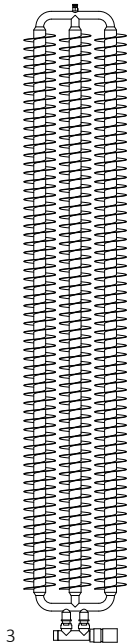


Design: Przemysław Jan Majchrzak

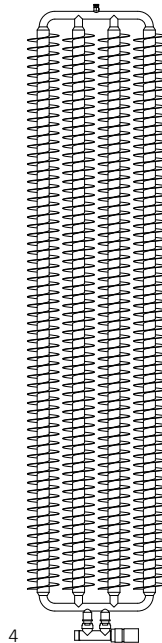
Standard connection:



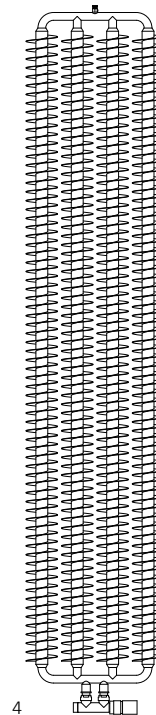
Available sizes:



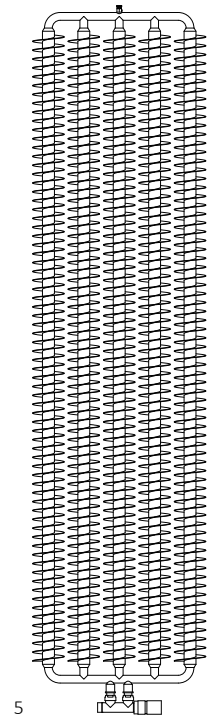
3
1720 x 290
↓ ↔



4
1720 x 390



4
1920 x 390



5
1920 x 490

Specification:

Working pressure: 1000 kPa Maximum operating temperature: 95°C

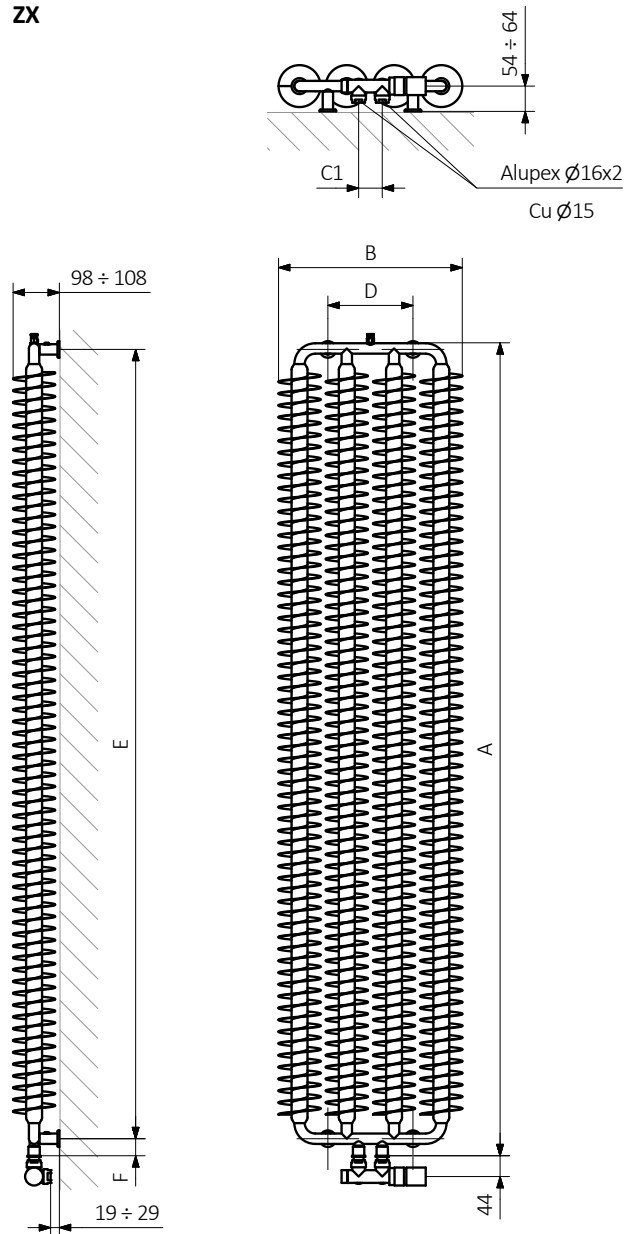
A ↓ [mm]	B ↔ [mm]	C1 [mm]	75/65/20°C [W]	55/45/20°C [W]	D [mm]	E [mm]	F [mm]	U [dm³]	W [kg]	Product code <small>Configuration code p. 5</small>
1720	290	50	660	330	80	1672	36	3,14	26,65	WGRIB172029
1720	390	50	872	436	180	1672	36	4,10	35,16	WGRIB172039
1920	390	50	989	499	180	1872	36	4,59	39,37	WGRIB192039
1920	490	50	1240	626	280	1872	36	5,66	48,92	WGRIB192049

Ribbon V



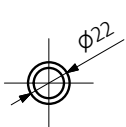
Technical drawing:

ZX

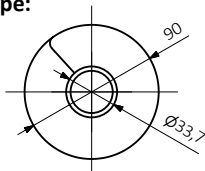


A – Height B – Width C1-C5 – Distance between pipe centres D – Horizontal distance between mounting bracket centres
E – Vertical distance between mounting brackets F – Distance between a mounting bracket and the bottom of the radiator

Collector:



Pipe:





colour included
in the price

In the table with technical data, the last column lists product codes. When placing an order, please remember to quote the product code followed by the configuration code as shown in the diagram below:

The construction of a water and dual fuel radiator product and configuration code:

WGRIB172029

K916SX

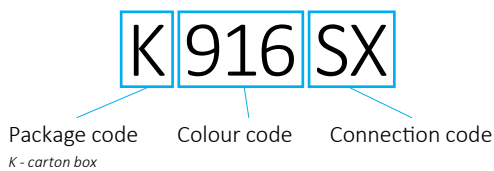
PRODUCT CODE

(located in the table for the product)

CONFIGURATION CODE

(supplemented by hand)

Example Configuration



Epoxy primer

E – Code of epoxy primer is an extra processes.

WGSDW151050 K916SX **E** — Extra processes or additions code

Ribbon V



Legend



Radiator available in a "water" version.



Radiator suitable for dual fuel connection. Electric heating element can be installed.



Radiator available in electric only version. It comes prefilled with a 'heating medium' and equipped with a heating element. All tested and ready to use.



Connection types dedicated for this radiator. The icon shows the flow and return connections for the radiator as well as the thermostatic valve and heating element position if applicable.



Suggested heating element power output for electric and dual fuel versions.



Weight.



Capacity.



Available in chrome finish.



No additional payment for a color.